

sergiani range

hydraulic presses with electronic control



*Photo may include optional equipment

QUOTE #:

DATE: 01/01/2022

SERGIANI 3D Form Press 30-14



SCM is an industry leader for the production of industrial woodworking machinery, as well as for machinery that processes advanced materials, with brands specializing in specific technologies, present across 5 continents for over 65 years.

65 years of history

3 main production sites in Italy

20 foreign branches

300,000 square meters of production space

17,000 machines manufactured per year

90% export

350 agents and dealers

500 support technicians

500 registered patents

THE MOST IMPRESSIVE DISTRIBUTION NETWORK IN THE WORLD



Dear CUSTOMER,

Thank you for your consideration in working with SCM. Attached is our proposal for the Sergiani 3d Form press line. If SCM has inadvertently omitted any portion or feature requested by the customer upon agreement, please contact SCM sales personnel for further clarification about this price quotation.

We appreciate your business and we look forward to hearing from you soon.

Sincerely,

Paolo Chiezzi
Product Manager
404-759-3549
pchiezzi@scmgroup.com

NAME
AREA MANAGER
PHONE
EMAIL

Equipment Finance:

Blair Chandler
SCM North America Equipment Finance
770-238-8500
bchandler@scmgroup.com

For all other general inquiries, please feel free to contact our offices below:

SCM North America
2475 Satellite Blvd.
Duluth, GA 30096-5808
Phone: 770-813-8818
Fax: 770-813-7880

SCM West Coast
933 Sandhill Ave
Carson, CA 90746
Phone: 770-813-8818

"3D FORM SERIES" HYDRAULIC MEMBRANE PRESSES

sergiani 3d form

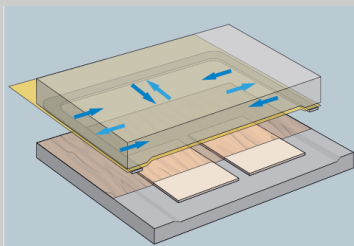


Above picture is purely informative

MAIN ADVANTAGES



ELECTRONIC CONTROL of each phase of the pressing cycle, with standard or customized program according to the specific requirements of the customer.



INTERMEDIATE FLANGE high definition even with complex shapes. Possibility to work with or without membrane. In case of membrane cycle, the "intermediate flange" device allows creating vacuum between membrane and PVC, reducing the risk of wrinkles. Furthermore, it permits to execute a second pressing cycle through a cold air blast that acts directly on the PVC and separates the membrane from 3d elements.



HYDRAULIC CYLINDERS the steel rod is chromed with a thick layer and rectified, all gaskets are high resistance to guarantee long lifetime and perfect seal.

Pos. A TRAY LOADING - UNLOADING UNIT

The structure of the tray loading-unloading unit is made of anodized aluminium profiles. Tray is composed of an insulating material to reduce heat dispersions.

The operator, once the loading phase of the panels to be pressed has been completed, moves the tray into the block press. It is possible to select the optional “loading tray automation” that allows the automatic loading of the unit in the block press.

The tray, equipped with bearing wheels, slides on drawn guide rails. The sealing flange of the tray is made of aluminium casting with a silicone o-ring gasket.

The entrance of the loading unit in the press block is placed on 1.340 side, to ease the loading-unloading operations of the panels to be pressed.

To increase press productivity, it is possible to select a second loading-unloading unit with tray among the available options. In this case, the operator can carry out panels loading-unloading while the second tray is inside the press daylight.

The two trays move simultaneously and it is possible to choose to have the second unit on the same side of the first one or on the opposite side.

Pos. B PRESS FRAME

CONSTRUCTIVE FEATURES

Structure made of welded and normalised steel beams. The constructive design guarantees the highest level of resistance and rigidity in each pressing phase, thus obtaining greater gluing and surface quality of the pressed product.

The components are all processed on cnc machining centres to grant the three-dimensional verticality of the structure and then assembled on precision templates.

HYDRAULIC UNIT

It consists of a double pump and related electric motor dipped in hydraulic oil for a longer life and lower levels of noise.

The first pump has a high capacity and low pressure for a fast platen closing with exchange valve to switch quickly to the second high pressure pump.

To ease check and maintenance operations all the groups are in a single unit: high and low pressure pump, oil filter, control and safety valves.

The cylinders are stress relieving treated to eliminate the mechanical stress created during



welding. The alloyed steel rod is chromed with a thick layer and then rectified. Assembling is carried out with particular care and constant control of the dimensional tolerances.

High resistance gaskets to grant a perfect and long lasting seal over time.

The large dimensions special flanges grant a perfect guide of the rod even at its maximum stroke.

FLATNESS CONTROL

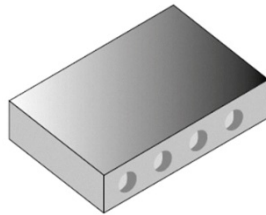
The press is equipped with a mechanical system with 2 couples of racks, pinions and torsion bars for a perfect longitudinal and transversal control of the mobile platen movement.

It is furthermore provided with adjustable side guides, for the sliding of the platen.

PLATENS

Upper platen of the working cell in solid drilled steel, heated with diathermal oil for perfect temperature distribution.

The bottom mobile platen is made of welded and normalised steel beams and then it is milled to realize all the circuits that allow creating vacuum.



HEATING DEVICES

Diathermic oil heated by electric boiler-
Maximum working temperature is 120°C.

The press is provided with an installation including:

Battery of electric resistors, composed by an independent unit, for the diathermic oil heating with protection against short-circuits. The resistors and the body of the boiler are made of steel with galvanic treatment for superficial protection. The body of the boiler is covered with thermal insulation;

Pump and oil circulation system with safety device to protect the resistors in case of shut down of the pump;

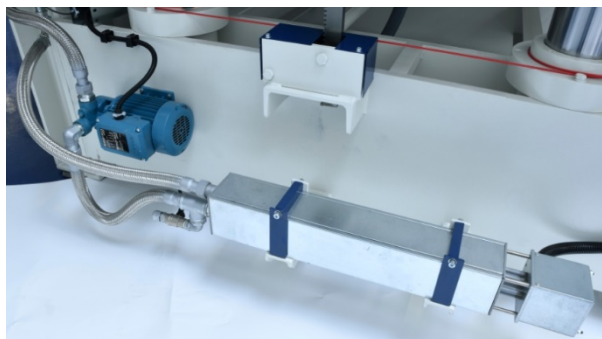
Electronic control of the circulation system according to different environmental conditions for a longer life of resistors;

Expansion tank with bleed air valves and safety valves. The expansion tank and the pipes are made with specific materials for heating installations selected among the best brands;

First complete filling of diathermic oil included in the supply;

Electronic and electromechanical power drives;

Electronic programming for anticipated boiler starting in order to have press ready when required.



PNEUMATIC SYSTEM

The machine is equipped with a powerful negative pressure system and pressurised air storage tank, to ensure an immediate and constant pressure delivery into the working cell. All pipes for air and vacuum are made of stainless steel and are assembled with brass fittings with special seals.

OPERATOR PANEL

Colour touch-screen operator's control placed on the control panel console that can be positioned on both sides of the loading tray.

The system is equipped with a dedicated software that makes the use of the press easy and immediate.

The following parameters can be programmed with the possibility of recall and modify them:

Air specific pressure adjustment inside the working cell according to the panel type and the laminating material. The system automatically adjusts the hydraulic pressure in proportion to the working pressing delivery. Possibility to save up to 100 working recipes (e.g. temperature, specific pressure, timer for pressing and panels dimensions);

Electronic adjustment of the time for each pressing cyclephase;

Electronic control of upper platen temperature and membrane temperature display (optional);

Programming of the boiler starting time for every day of the week;



Furthermore the following functions are available:

Complete diagnostic and failures reporting with messages on the display. The system controls the main components of the press and reports the malfunctions that may occur for a quick and easy trouble shooting and working out.

OTHER EQUIPMENTS AND FEATURES OF THE PRESS

Lifting hook for an easy machine loading/unloading during transport.
Levelling devices mounted at the feet of the press.

Production code: SERGIANI 3DF

RP.02.33 Electric cabinet execution according to UL CSA regulations

RP.02.31

Sergiani 3d form 30-14 (5 kg/cm² - tray dimensions 2840 x 1340 mm - 6 cylinders D.140 mm)

Model	sergiani 3d form 30-14	
3D FORM RANGE		
Inner flange dimensions	mm	2840 x 1340
Max. panel dimensions panel width: 20 mm	mm	2740 x 1240
Working cell height	mm	60
Total thrust	ton	300
N. of cylinders - Diameter	mm	6 - 140
Max. specific pressure	kg/cm ²	5
Mobile platen		Bottom
Opening	mm	230
Loading side	mm	1340

93.07.37 Volt 460

93.15.01 Frequency 60 hz

EP.00.73 PVC rolls storage with pneumatic cut (2 rolls)
Pneumatic cut operated by foot pedal control.



EP.03.91 Second 30-14 loading-unloading tray on the same side

EP.03.93 Manual pin for 30-14 version

It avoids the use of raiser boards for a faster and easier cycle set



EP.03.98 Gloss finishing kit for 30-14 version

It includes:

Possibility to work with or without membrane. In case of membrane cycle, the “intermediate flange” device allows creating vacuum between membrane and PVC, reducing the risk of wrinkles. Furthermore, it permits to execute a second pressing cycle through a cold air blast that acts directly on the PVC for a greater gluing quality and definition even with delicate materials;

Membrane kit with rapid hook/unhook system.

EP.04.11 Loading tray automation

It allows the tray to be automatically fed into and closed in the press daylight. If "second loading unit" optional is selected, it allows simultaneous movement of two trays.

EP.04.13 Seaworthy packing

PRICE

Machine Price:

Delivery:

Installation:

Terms of Payment:

Terms of payment offered, or any terms agreed upon, are subject to credit approval. This offer is subject to SCM NORTH AMERICA General Terms and Conditions of Sale. Offer is subject to prior sale of the equipment. Quote expires in 30 days. Price quoted is for the machine as described above and is subject to change if the specifications for the machine are changed at the request of the buyer.

Shipment:

Shipment is subject to delay should changes be made to meet the requirements of purchaser from manufacturer's design specifications stated herein.

Tooling:

Tooling is not included. Upon request, we can supply a quotation on the most suitable tools required for use on this machine.

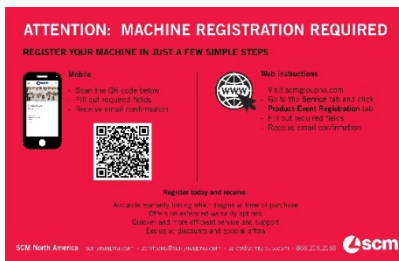
Installation, Training, Service Rates and Conditions:

Installation, when purchased, will be performed by an SCM factory trained service technician or Certified Dealer Technician. Installation is to be understood as the assembly of the machine to the 'ready-to-run' state; it does not include floor, masonry work, the running of electrical, pneumatic or dust extraction services to the site. Training will be conducted on site by the service technician after installation has been completed.

SCM is committed to maximizing your production time. Your machine may be preselected to contain automatic maintenance reminders. You can contact SCM North America Service Department at 866-216-2166 if and when you receive a maintenance message.

Product Registration:

Upon arrival of your machine, locate the red label with instructions on how to register your machine.



Warranty:

SCM warrants that the machinery will be free of defects in workmanship and materials for a period of one (1) year beginning on the date the machinery is accepted by the customer. This warranty includes belts, bearings, and common electrical parts, which carry a six-month warranty. This warranty does not include parts consumed during normal operation (wearable items) or maintenance required in the ordinary course of operation.

SERVICE & SPARE PARTS

A CONTINUOUS COMMITMENT TO PROTECT YOUR INVESTMENT

Visit our website at www.scmgroupspareparts.com

SERVICE

Email us at service@scmgroup.com

SCM provides a service that goes beyond the purchase, to guarantee the long term performance of your technological production system and peace of mind for your business.

A COMPLETE RANGE OF AFTER-SALES SERVICES

- Installation and start-up of machines, cells, lines and systems
- Tailored training programs
- Telephone support to reduce times and costs when machines are experiencing down time
- Preventive maintenance programs to guarantee long term performance
- Complete renovation of machines and plants to renew the added value of your investments
- Custom upgrading to update machines and plants to meet new production requirements

SPARE PARTS

Email us at spareparts@scmgroup.com

Parts Pronto – your one-stop shop for all spare parts and service needs www.scmgroupspareparts.com

SCM has 140 spare parts professionals worldwide to meet any request with real-time shipments.



Our spare parts inventory, with a value of 15 million dollars, covers every single machine.



Spare parts guaranteed: we guarantee also hard to find parts, with 3.5 million euros invested in “critical” spare parts.



Immediate availability: over 90% of orders received are carried out the same day thanks to the huge inventory available.



6 branches around the world: The spare parts service can count on worldwide support (Rimini, Singapore, Shenzhen, Moscow, Atlanta, Sao Bento do Sul).



500 shipments a day





Equipment Finance Application

Company Name: _____ Email Address: _____

Address: _____ City: _____ State: _____ Zip: _____

Phone: _____ Fax: _____ Years in Business: _____

Address of Equipment location: _____

Company Website: _____ Tax Exempt Yes No Fed ID #: _____

Check One: Corp. LLC Partnership Sole Prop. State of Incorpor: _____

Bank: Include copy of first page of Company's most recent 3 months bank statements

Vendor Name: _____ Contact: _____ Equipment Cost: _____

Equipment Description (attach sales order if available): _____

Please complete the following information, and signature, of each officer:

1) Owner's Name: _____ Title: _____

Social Security Number: _____ % Owner: _____

Address: _____ City: _____ State: _____ Zip: _____

2) Owner's Name: _____ Title: _____

Social Security Number: _____ % Owner: _____

Address: _____ City: _____ State: _____ Zip: _____

3) Owner's Name: _____ Title: _____

Social Security Number: _____ % Owner: _____

Address: _____ City: _____ State: _____ Zip: _____

I hereby certify that the information contained in the lease application is true and accurate and I hereby authorize our banks, trade references and financial institutions the right to release credit information. In states where permissible, I hereby authorize the filing and recording of UCC financing statements showing the Secured Party's interest in the equipment and grant the Secured Party's right to execute lessee's/debtors name thereto. A photocopy of this authorization shall be as valid as the original.

Signature: _____ Title: _____ Date: _____

SCM Equipment Finance
2475 Satellite Boulevard
Duluth, GA 30096

Phone: 800.292.1837
Fax: 770.813.8263
financing@scmgroup.com

Visit our website for more information
and to view our online application:
[SCM Equipment Finance](#)

Blair Chandler
blair.chandler@scmgroup.com
770.238.8500