



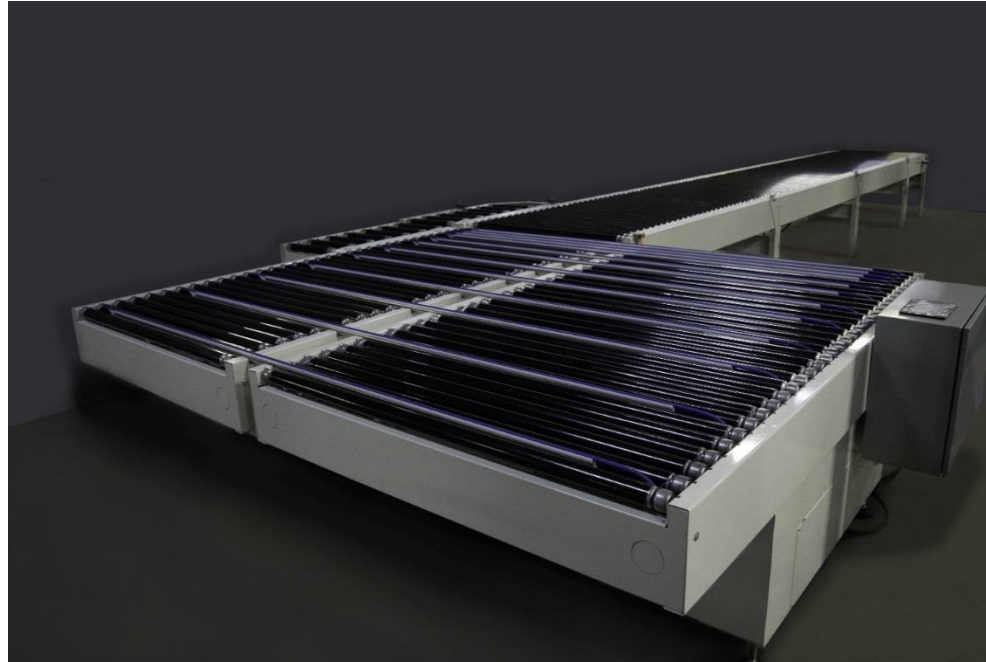
ERC Return Conveyors

Industrial Material Handling



THE STRONGEST WOOD TECHNOLOGIES ARE IN OUR DNA

erc conveyors



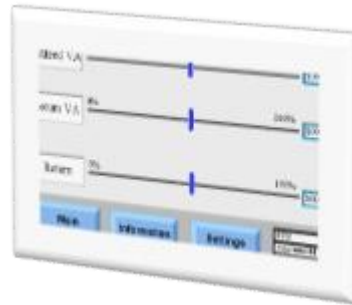
ERC Return Conveyor

- 7" Touchscreen Controller
- Available in Various Widths
- Independent Speed Control
- Panel Kicker Standard
- Panel Rotator Standard
- Panel Support Rollers Standard

erc conveyors



Main Screen



Variable Speed Set-up

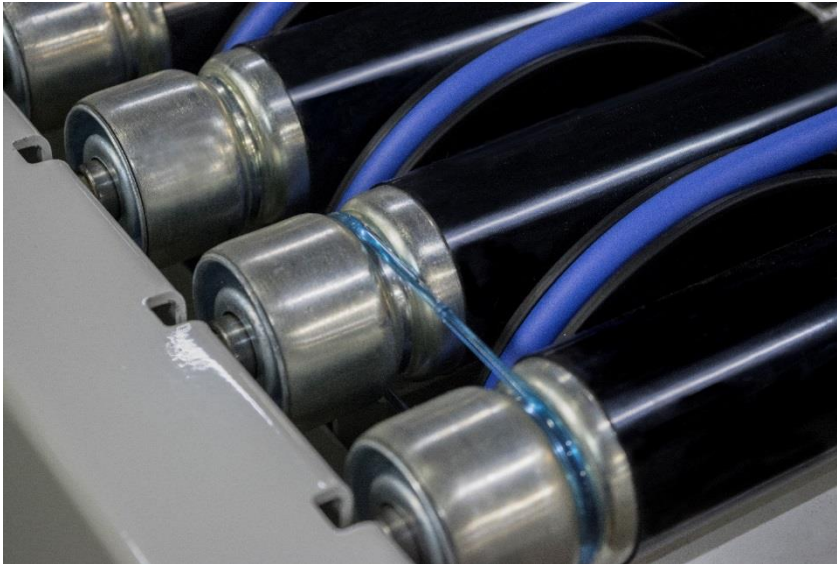


Manual Controls

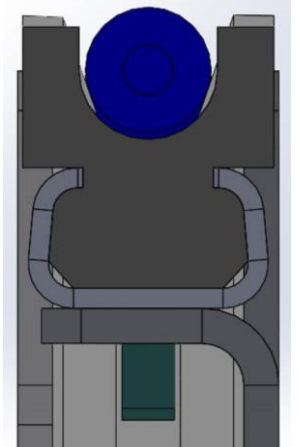
- 7" Touchscreen Color Controller
- Independent Speed Control
 - Receiving Table
 - Transfer Table
 - Return Table
- Electrical Panel
 - Located at Machine Outfeed
 - Dust Free Enclosure
 - Exhaust Fan



erc conveyors



- Steel Rollers (no longer pvc)
- Urethane Coated Rollers
- New Transfer Belt Guides
 - Deeper Grooves
 - Shorter Support
 - More Robust Design
 - Steel Support

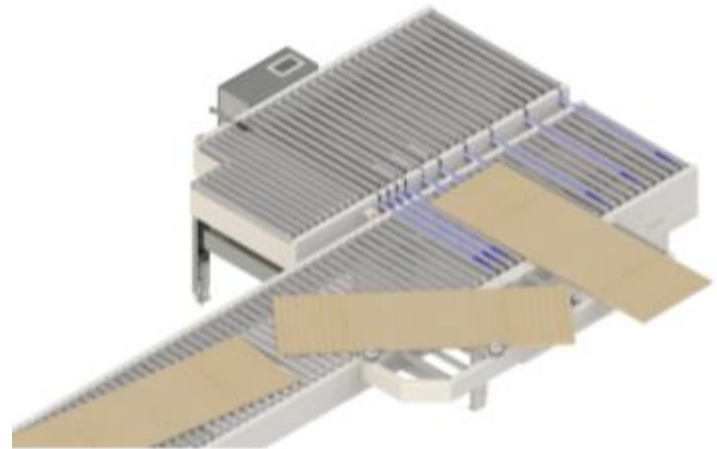


erc conveyors

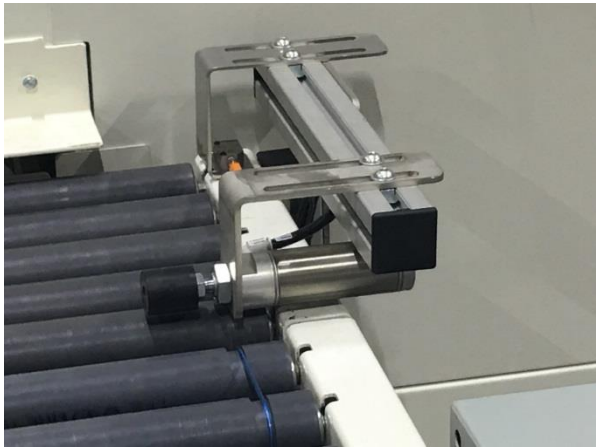
NEW



- Panel Rotator is Standard
- Simplifies the Processing of Short Sides on Long Panels
- Turns the Panels 90°
- Eliminates Panel Overhang



erc conveyors

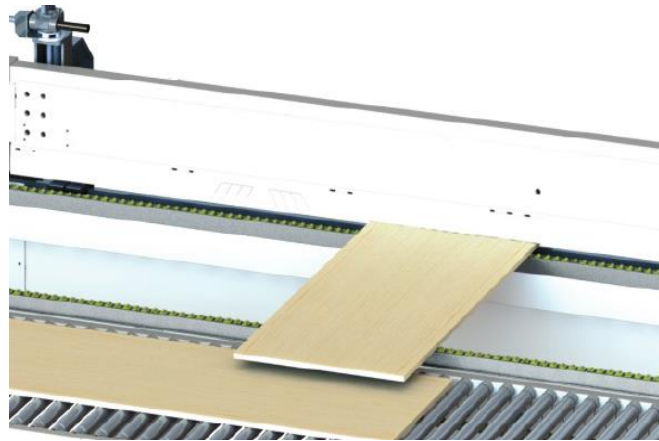


- Panel Kicker is Standard
- Prevents Narrow Parts from Getting Caught Between the Rollers
- Spreads the piece Across Multiple Rollers to Help with Feeding

NEW

erc conveyors

NEW



- Panel Support Rollers are Standard
- Designed for long/thin panels that have a tendency to sag
- Returning panels pass under panels being banded
- Eliminates the need for operator assistance on long panels

erc conveyors



- Gen 2 Base
 - One Piece Design for Entire Transfer Process
 - Provides Quicker Setup Time
 - Improved Drive and Lifting System
 - Detailed Installation Manuals for Dealer Installation

NEW

erc conveyors

STANDARD RETURN CONVEYOR SOLUTIONS					
Model	ROLLER WIDTH (MM)		RECEIVING TABLE LENGTH (MM)		PART NUMBER
	900	1200	1600	2400	
KD	■		■		900-16-KD
		■	■		1200-16-KD
	■			■	900-24-KD
		■		■	1200-24-KD
MD	■		■		900-16-MD
		■	■		1200-16-MD
	■			■	900-24-MD
		■		■	1200-24-MD

- Available in Different Lengths and Widths
- Stock Units with both 3' and 4' Wide Rollers
- Receiving Table Available in 62" and 96" Lengths
- Available for Any Manufacturer's Machine



**We thank you
for your attention**