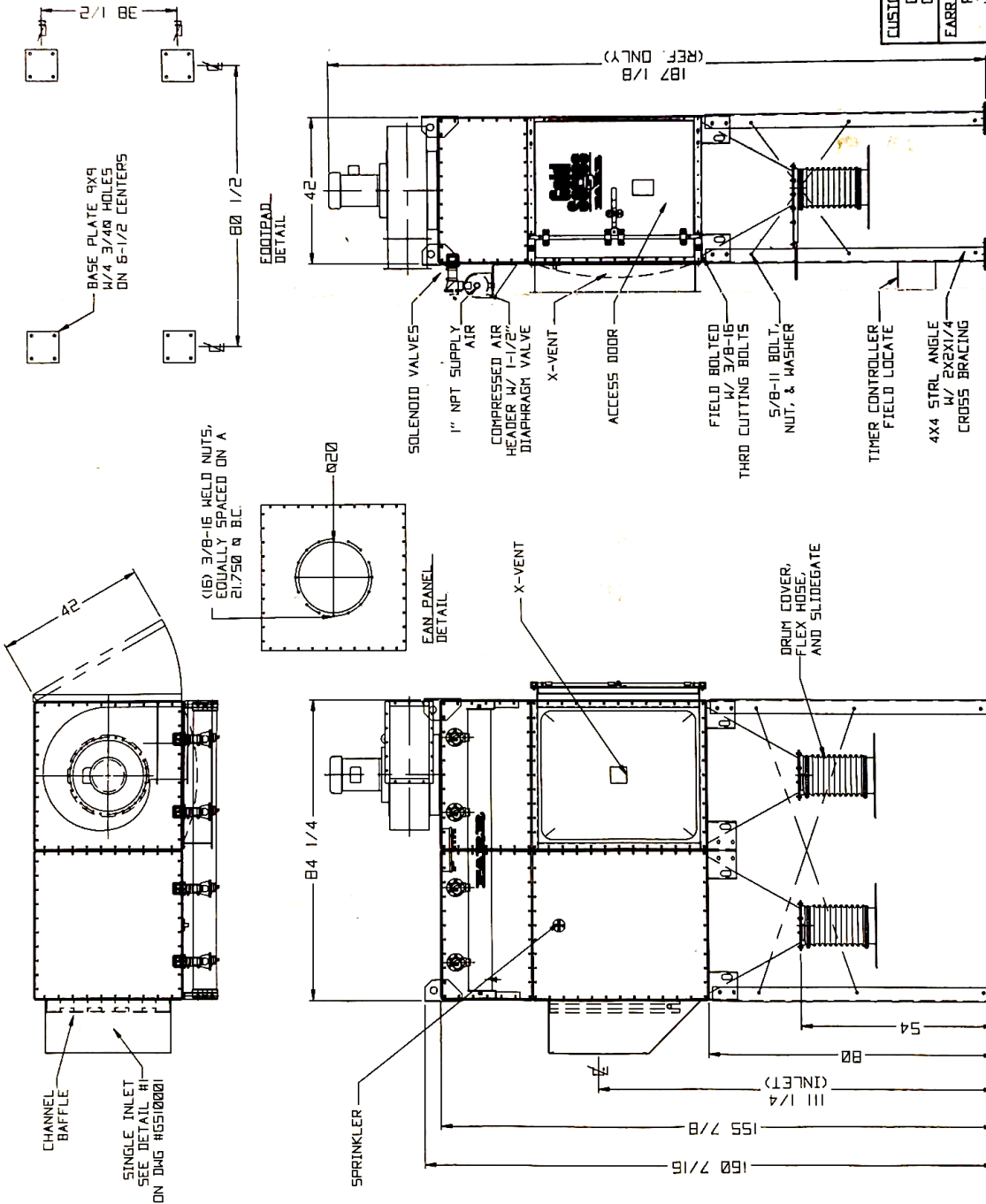


Farr GS8 Dust Collector

-14" Inlet

-4500 CFM @ 10" W.G.

-Auto Filter Cleaner



SPECIFICATIONS:

1. MODULAR CONSTRUCTION FROM 10 GA & 7 GA HRCS
2. SOLID STATE TIMER CONTROLS REQUIRE 120/240 VAC SINGLE PHASE 50/60 HZ
3. SOLENOIDS REQUIRE 120/160 VAC
4. NEMA 4 RATING ON ELECTRICAL ENCLOSURES.
5. CLEANING SYSTEM REQUIRES 60 CF PER VALVE PER PULSE OF CLEAN DRY COMPRESSED AIR AT 90 PSI
6. HOUSING IS RATED FOR +/- 25" W.G.
7. WEIGHTS (COLLECTOR & FILTER): 1995 (CHOPPER & SUPPORT) 770 (FAN) 615 TOTAL WEIGHT: 3380
8. ITEMS 102, 103, & 104 MAY BE SHIPPED ASSEMBLED

MODEL: 658
 FINISH: FARR GREEN POWDER PAINT
 APPLICATION DATA:
 CFM: 4500 @ 10" W.G.
 AIR-TO-CLOTH RATIO: 17:1
 DUST LOADING:
 APPLICATION: WOOD DUST

CUSTOMER/LOCATION: CHICAGO BLOM PIPE CHICAGO, IL		A 11/24 REV 1		FIRST ISSUE		103		104		105	
FARR-APC REPLICATION: JOHN DIETRICH		DESCRIPTION: G58 DUST COLLECTOR		REV 1		REV 2		REV 3		REV 4	
P.O. NUMBER: 2608		SCALE: 1:1		REV 1		REV 2		REV 3		REV 4	
FARR ORDER No: 755380		PROJECT DRAWING: CHICAGO BLOM PIPE/ PROCESS RESOURCES		REV 1		REV 2		REV 3		REV 4	
CERTIFIED SALES DRAWING		DRAWING No: 755380		REV 1		REV 2		REV 3		REV 4	

* THE CUSTOMER ASSUMES THE RESPONSIBILITY FOR CONTACTING THEIR INSURANCE UNDERWRITER AND ADVISING CAMPIL/FARR IN REGARD TO SPECIFIC APPLICATION REQUIREMENTS OF EXPLOSION AND VENTING OR IF ADDITIONAL FIRE PROTECTION AND SAFETY EQUIPMENT MAY BE REQUIRED. THE BUYER IS ALSO CAUTIONED TO ADHERE TO PRESCRIBED OSHA, NFPA, FEDERAL STATE AND LOCAL CODES AND REGULATIONS APPLICABLE TO INDUSTRIAL VENTILATION SYSTEMS, WHICH CAMPIL/FARR