

D

C

B

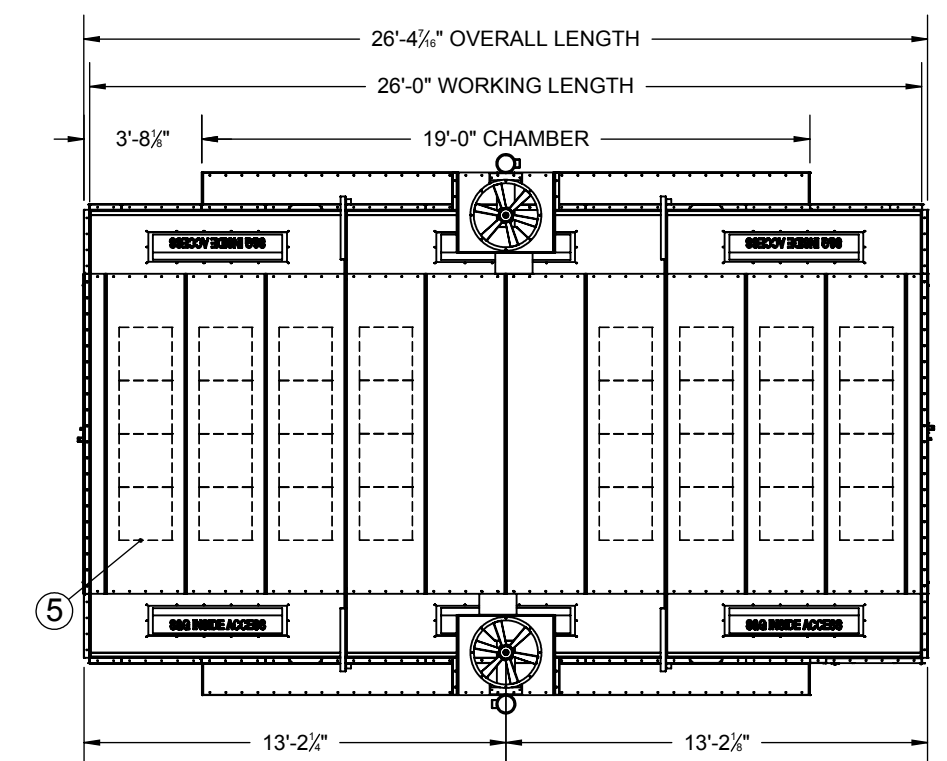
A

D

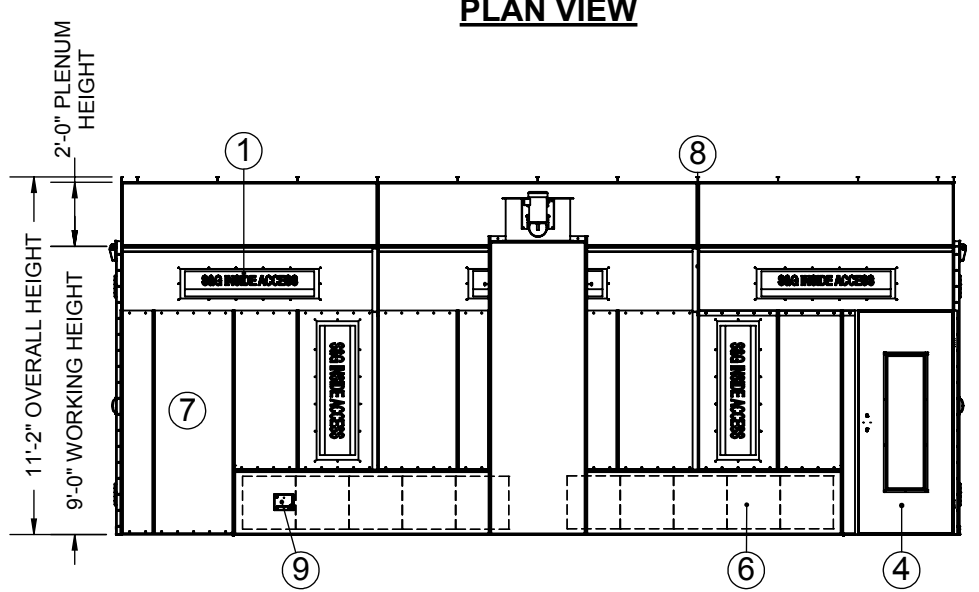
C

B

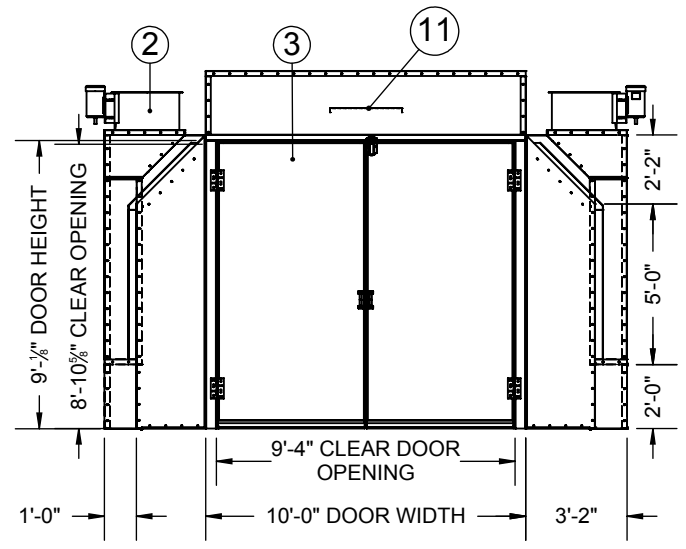
A



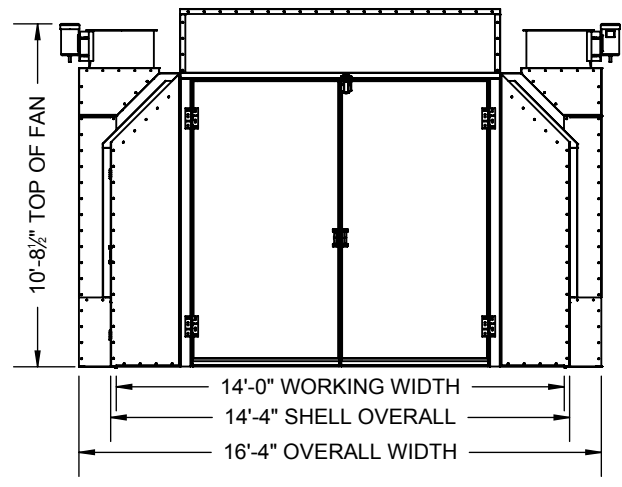
PLAN VIEW



SIDE ELEVATION



FRONT VIEW



END VIEW

ITEM	QTY.	Description
1	10	"ETL" LISTED, FOUR TUBE 48"; 32 WATT LIGHT FIXTURE. (CLASS 1, DIVISION 2, INSIDE ACCESS S&G)
2	2	24Ø TUBEAXIAL FAN; RATED FOR 6,600 SCFM EXHAUST @ 3/4 SP; DRIVEN BY 2 HP ODP TYPE MOTOR
3	2	SOLID PRODUCT DOORS W/ ONE PANIC LATCH, SWEEP SEAL, & HARDWARE
4	1	PERSONNEL ACCESS DOOR, 36" x 84" w/ OBSERVATION WINDOW, LATCH, & HANDLE
5	32	INTAKE FILTER, 20" x 20" x 1", TACKY
6	20	EXHAUST FILTERS; 20"X20"X2" PADS W/ GRIDS
7	1 LOT	18 GA. GALVANIZED STEEL SHELL
8	2 SETS	14 GA. GALVANIZED SUPPORT STEEL
9	2	MANOMETER (1 PER CHAMBER)
10	1	1/2" AIR SOLENOID VALVE (NOT SHOWN)
11	1	DIFFUSER PANEL

ADDITIONAL DUCTWORK SUPPORT TO SUIT FIELD CONDITIONS TO BE SUPPLIED BY OTHERS.
ALL ANCHOR BOLTS TO BE SUPPLIED BY OTHERS.

COL-MET SPRAY BOOTHS ARE MANUFACTURED IN ACCORDANCE WITH NFPA-33.
BOOTH WALLS & CEILING PANELS FABRICATED OF 18 GA. GALVANIZED STEEL IN ACCORDANCE WITH NFPA-33 CHAPTER 5.1.4.

SEE ORDER ACKNOWLEDGEMENT FOR COMPLETE LIST OF PROVIDED STACK, AND OPTIONAL COMPONENTS.

IMPORTANT NOTICE:
IN THE CONSTRUCTION OF THIS BOOTH THERE MAY BE POSSIBLE FIELD MODIFICATIONS BY THE INSTALLER. THESE MODIFICATIONS MAY INCLUDE, BUT ARE NOT LIMITED TO:

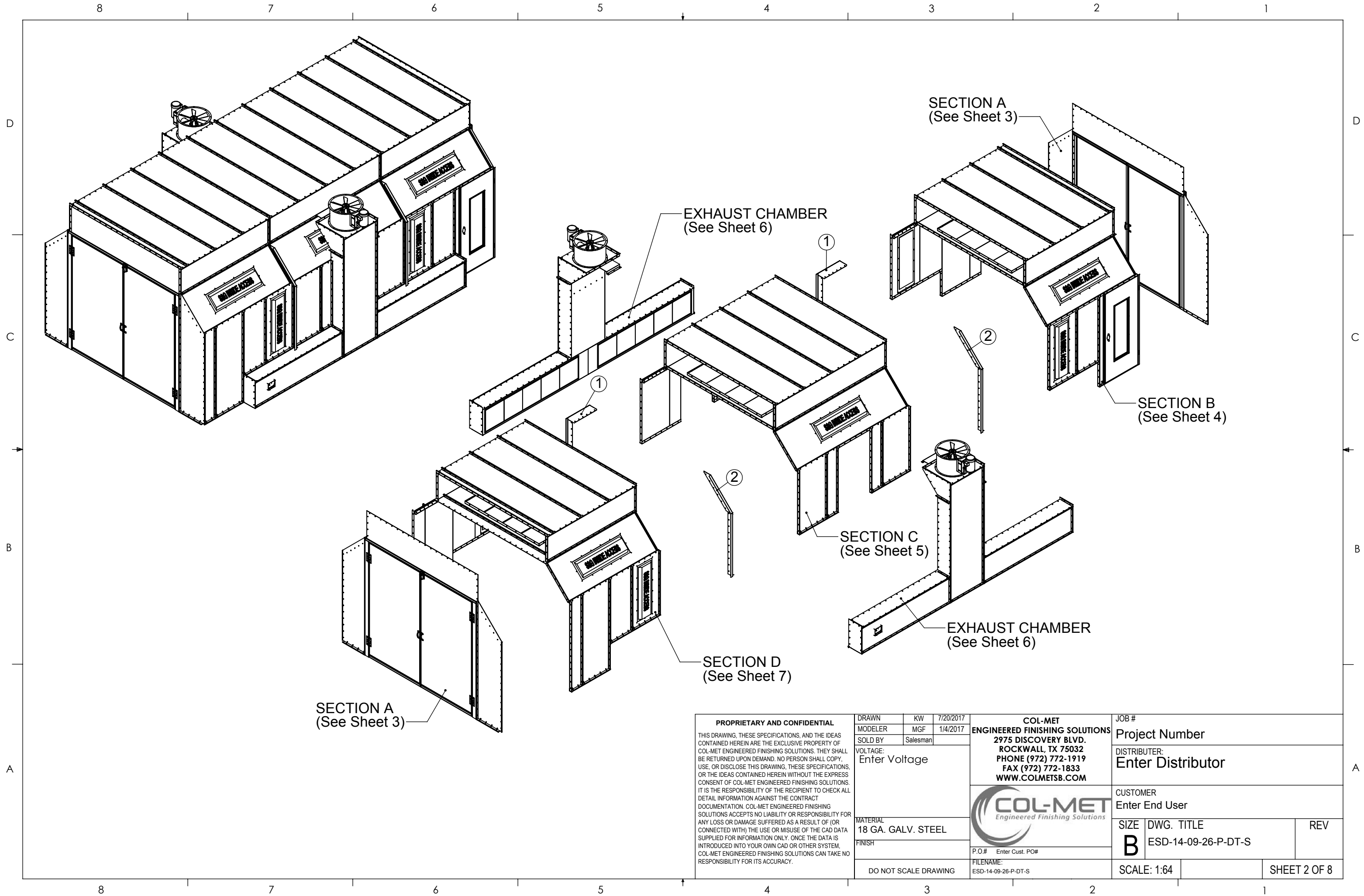
- WELDING
- CUTTING
- NOTCHING
- DRILLING

GENERAL NOTES:

1. WORK CHAMBER WILL BE BOLTED CONSTRUCTION WITH 5/16" BOLTS ON STANDARD 6" CENTERS
2. WORK CHAMBER TO BE 18 GA. GALVANIZED UNPAINTED SHEET METAL EXCEPT AS NOTED.
3. ALL MOTOR CONTROLS, SWITCHES, LIGHT LAMPS OR TUBES, INCLUDING CONNECTIONS TO EQUIPMENT TO BE FURNISHED AND INSTALLED BY CUSTOMER EXCEPT AS NOTED.
4. AMPLE AIR MAKE-UP AND AIR SPACE WITHIN FRONT OF BOOTH MUST BE PROVIDED IN ORDER TO INSURE PROPER OPERATION OF BOOTH.
5. ALL LOCAL, CITY, & STATE PERMITS AND INSURANCE APPROVAL TO BE OBTAINED BY CUSTOMER.
6. CUSTOMER TO FURNISH ROOF PITCH, STACK QUANTITY AND CONFIGURATION IF REQUIRED.

For information on installation of the booth and components, please see our web site at www.colmetsb.com, click on "Resources" on the left side of the page, and then click on "Install Manual".

<p>PROPRIETARY AND CONFIDENTIAL</p> <p>THIS DRAWING, THESE SPECIFICATIONS, AND THE IDEAS CONTAINED HEREIN ARE THE EXCLUSIVE PROPERTY OF COL-MET ENGINEERED FINISHING SOLUTIONS. THEY SHALL BE RETURNED UPON DEMAND. NO PERSON SHALL COPY, USE, OR DISCLOSE THIS DRAWING, THESE SPECIFICATIONS, OR THE IDEAS CONTAINED HEREIN WITHOUT THE EXPRESS CONSENT OF COL-MET ENGINEERED FINISHING SOLUTIONS. IT IS THE RESPONSIBILITY OF THE RECIPIENT TO CHECK ALL DETAIL INFORMATION AGAINST THE CONTRACT DOCUMENTATION. COL-MET ENGINEERED FINISHING SOLUTIONS ACCEPTS NO LIABILITY OR RESPONSIBILITY FOR ANY LOSS OR DAMAGE SUFFERED AS A RESULT OF (OR CONNECTED WITH) THE USE OR MISUSE OF THE CAD DATA SUPPLIED FOR INFORMATION ONLY. ONCE THE DATA IS INTRODUCED INTO YOUR OWN CAD OR OTHER SYSTEM, COL-MET ENGINEERED FINISHING SOLUTIONS CAN TAKE NO RESPONSIBILITY FOR ITS ACCURACY.</p>	DRAWN: KW 7/20/2017 MODELER: MGF 1/4/2017 SOLD BY: Salesman	COL-MET ENGINEERED FINISHING SOLUTIONS 2975 DISCOVERY BLVD. ROCKWALL, TX 75032 PHONE (972) 772-1919 FAX (972) 772-1833 WWW.COLMETSBS.COM	JOB # Project Number	
	VOLTAGE: Enter Voltage		DISTRIBUTER: Enter Distributor	
	MATERIAL: 18 GA. GALV. STEEL		CUSTOMER Enter End User	
	FINISH: DO NOT SCALE DRAWING		P.O.# Enter Cust. PO# FILENAME: ESD-14-09-26-P-DT-S	SIZE: B DWG. TITLE: ESD-14-09-26-P-DT-S REV:



SECTION A
(See Sheet 3)

EXHAUST CHAMBER
(See Sheet 6)

SECTION A
(See Sheet 3)

SECTION B
(See Sheet 4)

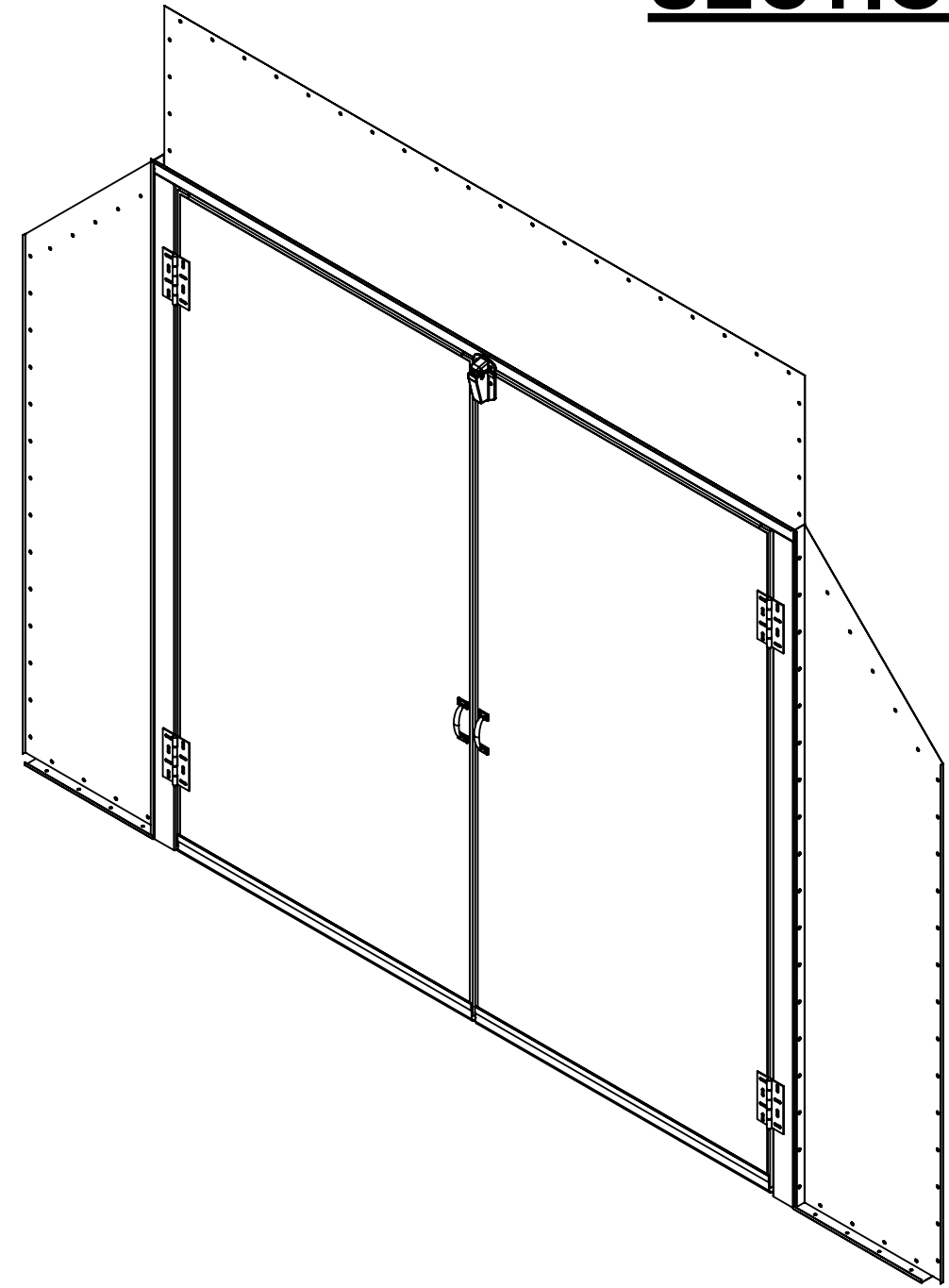
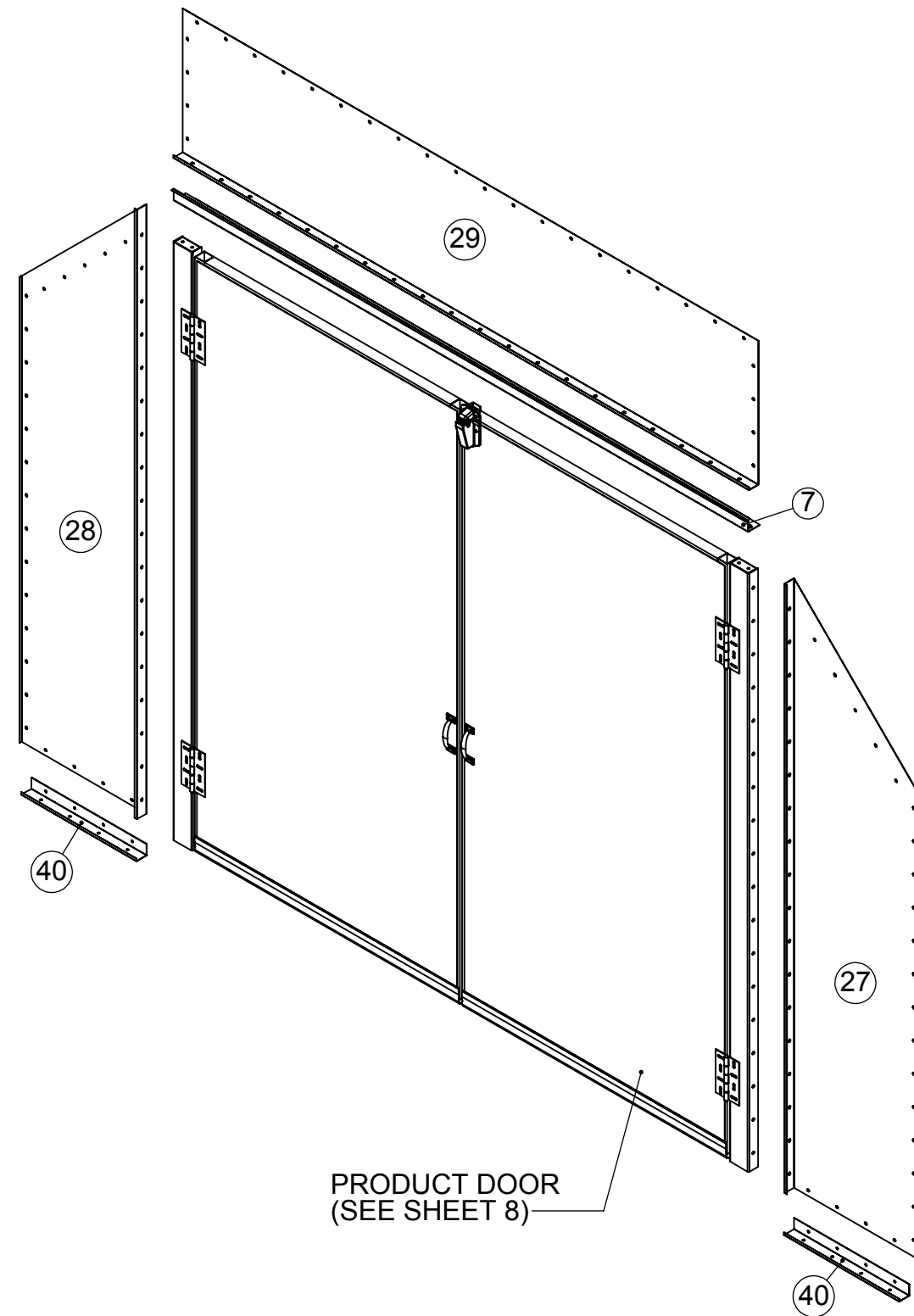
SECTION C
(See Sheet 5)

EXHAUST CHAMBER
(See Sheet 6)

SECTION D
(See Sheet 7)

<p>PROPRIETARY AND CONFIDENTIAL</p> <p>THIS DRAWING, THESE SPECIFICATIONS, AND THE IDEAS CONTAINED HEREIN ARE THE EXCLUSIVE PROPERTY OF COL-MET ENGINEERED FINISHING SOLUTIONS. THEY SHALL BE RETURNED UPON DEMAND. NO PERSON SHALL COPY, USE, OR DISCLOSE THIS DRAWING, THESE SPECIFICATIONS, OR THE IDEAS CONTAINED HEREIN WITHOUT THE EXPRESS CONSENT OF COL-MET ENGINEERED FINISHING SOLUTIONS. IT IS THE RESPONSIBILITY OF THE RECIPIENT TO CHECK ALL DETAIL INFORMATION AGAINST THE CONTRACT DOCUMENTATION. COL-MET ENGINEERED FINISHING SOLUTIONS ACCEPTS NO LIABILITY OR RESPONSIBILITY FOR ANY LOSS OR DAMAGE SUFFERED AS A RESULT OF (OR CONNECTED WITH) THE USE OR MISUSE OF THE CAD DATA SUPPLIED FOR INFORMATION ONLY. ONCE THE DATA IS INTRODUCED INTO YOUR OWN CAD OR OTHER SYSTEM, COL-MET ENGINEERED FINISHING SOLUTIONS CAN TAKE NO RESPONSIBILITY FOR ITS ACCURACY.</p>	<p>DRAWN: KW 7/20/2017</p> <p>MODELER: MGF 1/4/2017</p> <p>SOLD BY: Salesman</p>	<p>COL-MET ENGINEERED FINISHING SOLUTIONS</p> <p>2975 DISCOVERY BLVD. ROCKWALL, TX 75032 PHONE (972) 772-1919 FAX (972) 772-1833 WWW.COLMETS.COM</p>	<p>JOB #</p> <p>Project Number</p>
	<p>VOLTAGE:</p> <p>Enter Voltage</p>	<p>FILENAME:</p> <p>ESD-14-09-26-P-DT-S</p>	<p>DISTRIBUTER:</p> <p>Enter Distributor</p>
	<p>MATERIAL:</p> <p>18 GA. GALV. STEEL</p>	<p>CUSTOMER:</p> <p>Enter End User</p>	<p>SIZE: B</p> <p>DWG. TITLE: ESD-14-09-26-P-DT-S</p> <p>REV:</p>
	<p>FINISH:</p>	<p>DO NOT SCALE DRAWING</p>	<p>SCALE: 1:64</p>

SECTION A



PRODUCT DOOR
(SEE SHEET 8)

<p>PROPRIETARY AND CONFIDENTIAL</p> <p>THIS DRAWING, THESE SPECIFICATIONS, AND THE IDEAS CONTAINED HEREIN ARE THE EXCLUSIVE PROPERTY OF COL-MET ENGINEERED FINISHING SOLUTIONS. THEY SHALL BE RETURNED UPON DEMAND. NO PERSON SHALL COPY, USE, OR DISCLOSE THIS DRAWING, THESE SPECIFICATIONS, OR THE IDEAS CONTAINED HEREIN WITHOUT THE EXPRESS CONSENT OF COL-MET ENGINEERED FINISHING SOLUTIONS. IT IS THE RESPONSIBILITY OF THE RECIPIENT TO CHECK ALL DETAIL INFORMATION AGAINST THE CONTRACT DOCUMENTATION. COL-MET ENGINEERED FINISHING SOLUTIONS ACCEPTS NO LIABILITY OR RESPONSIBILITY FOR ANY LOSS OR DAMAGE SUFFERED AS A RESULT OF (OR CONNECTED WITH) THE USE OR MISUSE OF THE CAD DATA SUPPLIED FOR INFORMATION ONLY. ONCE THE DATA IS INTRODUCED INTO YOUR OWN CAD OR OTHER SYSTEM, COL-MET ENGINEERED FINISHING SOLUTIONS CAN TAKE NO RESPONSIBILITY FOR ITS ACCURACY.</p>	DRAWN: KW 7/20/2017 MODELER: MGF 1/4/2017 SOLD BY: Salesman	COL-MET ENGINEERED FINISHING SOLUTIONS 2975 DISCOVERY BLVD. ROCKWALL, TX 75032 PHONE (972) 772-1919 FAX (972) 772-1833 WWW.COLMETS.COM	JOB # Project Number
	VOLTAGE: Enter Voltage	CUSTOMER Enter End User	DISTRIBUTER: Enter Distributor
	MATERIAL: 18 GA. GALV. STEEL	SIZE: B DWG. TITLE: ESD-14-09-26-P-DT-S REV:	P.O.# Enter Cust. PO#
	FINISH:	DO NOT SCALE DRAWING	FILENAME: ESD-14-09-26-P-DT-S

SECTION B

D

C

B

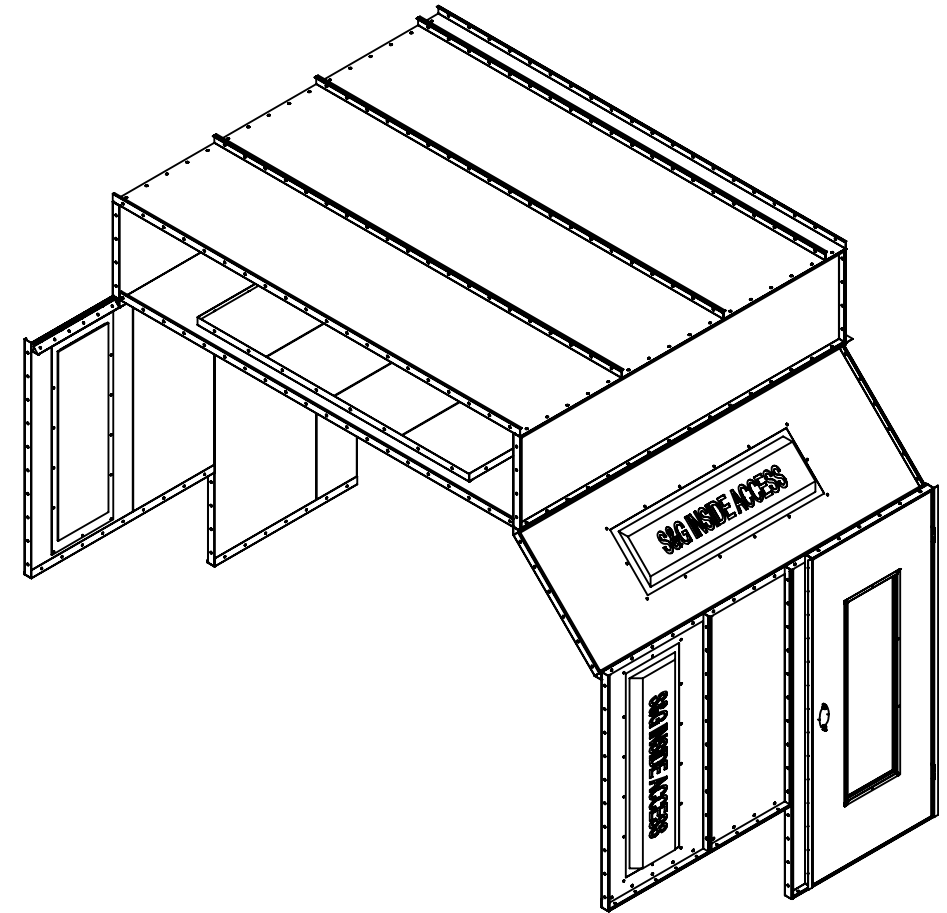
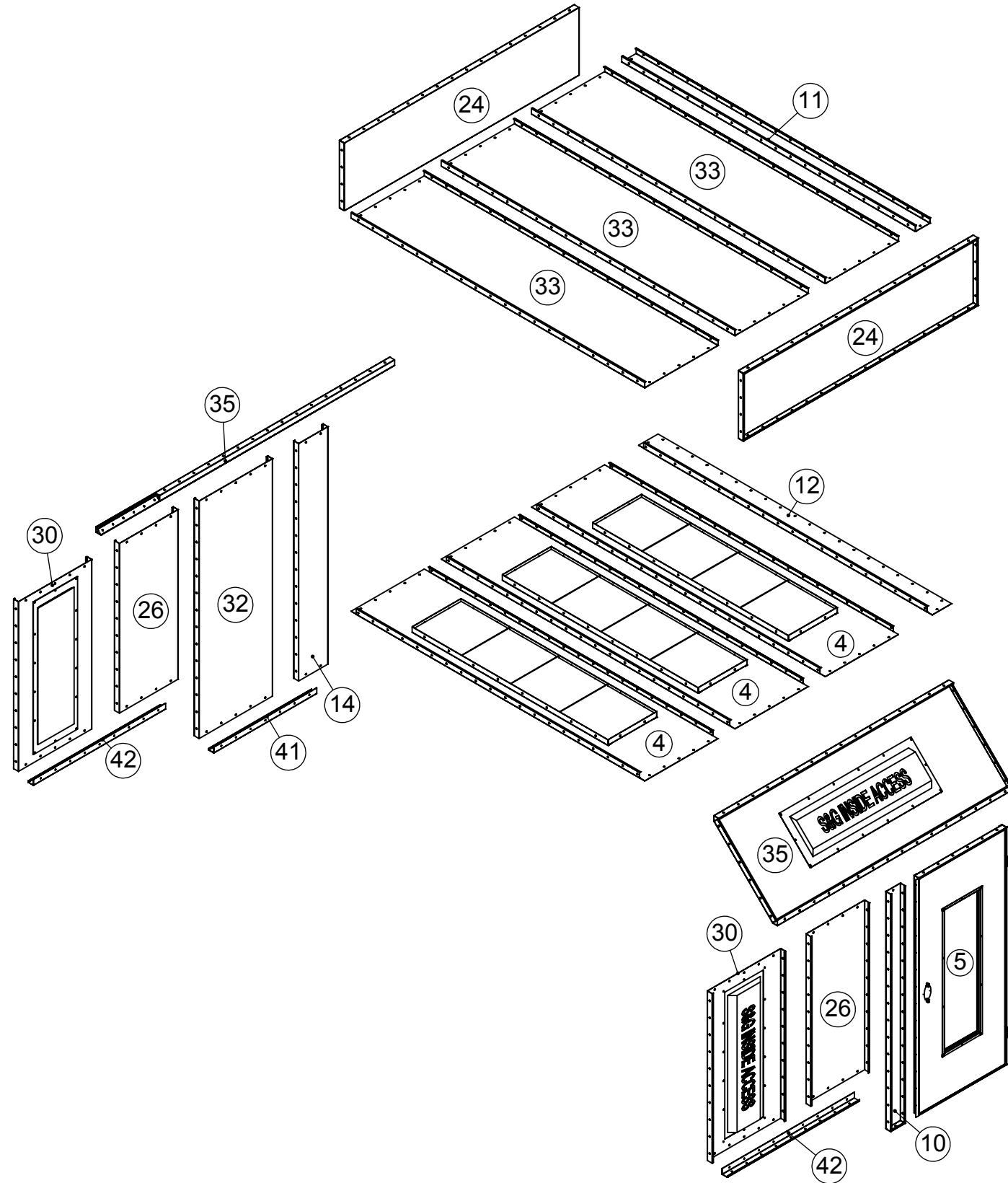
A

D

C

B

A



<p>PROPRIETARY AND CONFIDENTIAL</p> <p>THIS DRAWING, THESE SPECIFICATIONS, AND THE IDEAS CONTAINED HEREIN ARE THE EXCLUSIVE PROPERTY OF COL-MET ENGINEERED FINISHING SOLUTIONS. THEY SHALL BE RETURNED UPON DEMAND. NO PERSON SHALL COPY, USE, OR DISCLOSE THIS DRAWING, THESE SPECIFICATIONS, OR THE IDEAS CONTAINED HEREIN WITHOUT THE EXPRESS CONSENT OF COL-MET ENGINEERED FINISHING SOLUTIONS. IT IS THE RESPONSIBILITY OF THE RECIPIENT TO CHECK ALL DETAIL INFORMATION AGAINST THE CONTRACT DOCUMENTATION. COL-MET ENGINEERED FINISHING SOLUTIONS ACCEPTS NO LIABILITY OR RESPONSIBILITY FOR ANY LOSS OR DAMAGE SUFFERED AS A RESULT OF (OR CONNECTED WITH) THE USE OR MISUSE OF THE CAD DATA SUPPLIED FOR INFORMATION ONLY. ONCE THE DATA IS INTRODUCED INTO YOUR OWN CAD OR OTHER SYSTEM, COL-MET ENGINEERED FINISHING SOLUTIONS CAN TAKE NO RESPONSIBILITY FOR ITS ACCURACY.</p>	<p>DRAWN: KW 7/20/2017</p> <p>MODELER: MGF 1/4/2017</p> <p>SOLD BY: Salesman</p>	<p>COL-MET ENGINEERED FINISHING SOLUTIONS</p> <p>2975 DISCOVERY BLVD.</p> <p>ROCKWALL, TX 75032</p> <p>PHONE (972) 772-1919</p> <p>FAX (972) 772-1833</p> <p>WWW.COLMETS.COM</p>	<p>JOB #</p> <p>Project Number</p>
	<p>VOLTAGE:</p> <p>Enter Voltage</p>	<p>COL-MET ENGINEERED FINISHING SOLUTIONS</p> <p>Engineered Finishing Solutions</p>	<p>DISTRIBUTER:</p> <p>Enter Distributor</p>
	<p>MATERIAL:</p> <p>18 GA. GALV. STEEL</p>	<p>P.O.# Enter Cust. PO#</p>	<p>CUSTOMER:</p> <p>Enter End User</p>
	<p>FINISH:</p>	<p>FILENAME:</p> <p>ESD-14-09-26-P-DT-S</p>	<p>SIZE: B</p> <p>DWG. TITLE: ESD-14-09-26-P-DT-S</p> <p>REV:</p>
	<p>DO NOT SCALE DRAWING</p>	<p>SCALE: 1:40</p>	<p>SHEET 4 OF 8</p>

8

7

6

5

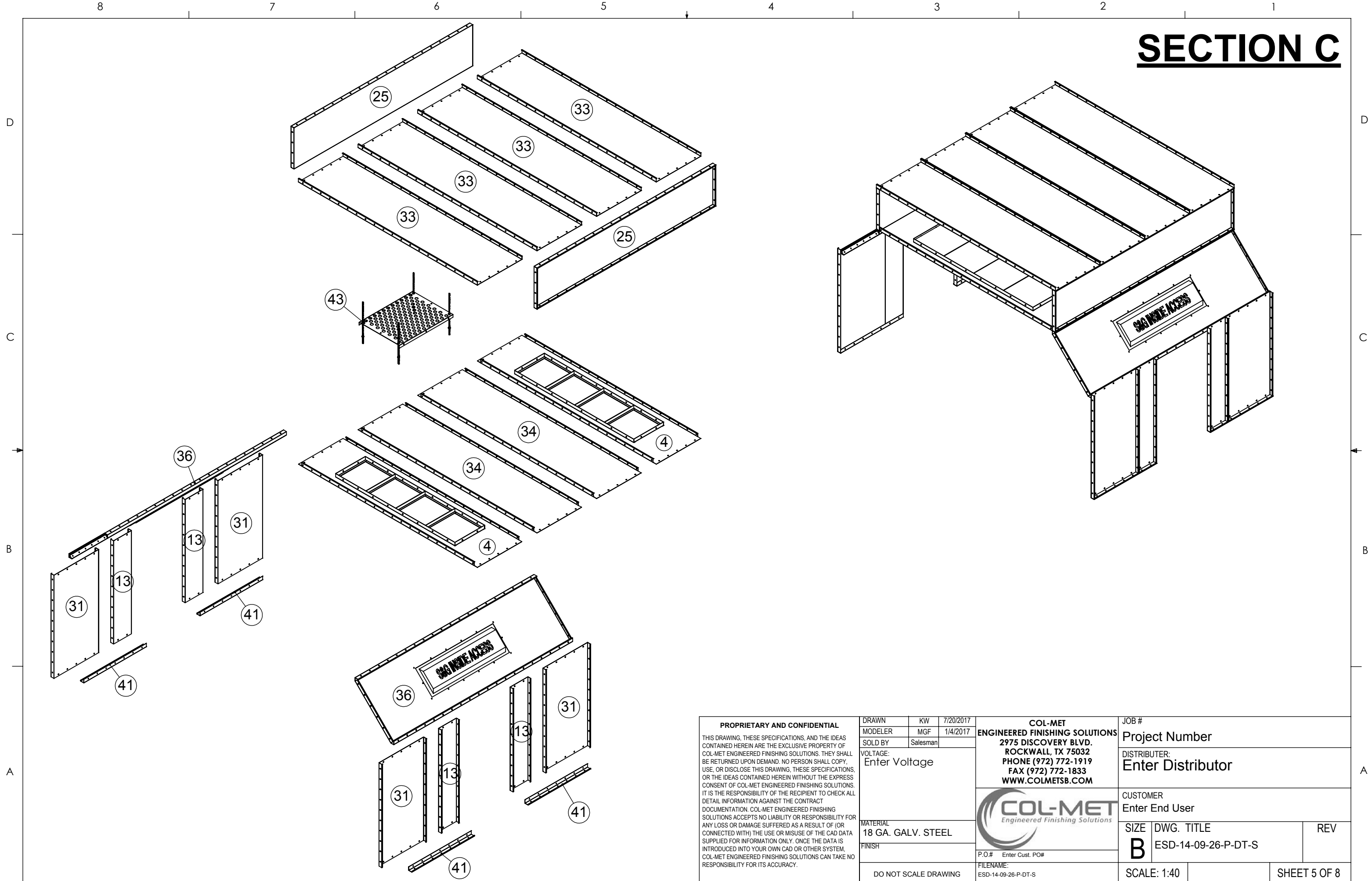
4

3

2

1

SECTION C



PROPRIETARY AND CONFIDENTIAL
 THIS DRAWING, THESE SPECIFICATIONS, AND THE IDEAS CONTAINED HEREIN ARE THE EXCLUSIVE PROPERTY OF COL-MET ENGINEERED FINISHING SOLUTIONS. THEY SHALL BE RETURNED UPON DEMAND. NO PERSON SHALL COPY, USE, OR DISCLOSE THIS DRAWING, THESE SPECIFICATIONS, OR THE IDEAS CONTAINED HEREIN WITHOUT THE EXPRESS CONSENT OF COL-MET ENGINEERED FINISHING SOLUTIONS. IT IS THE RESPONSIBILITY OF THE RECIPIENT TO CHECK ALL DETAIL INFORMATION AGAINST THE CONTRACT DOCUMENTATION. COL-MET ENGINEERED FINISHING SOLUTIONS ACCEPTS NO LIABILITY OR RESPONSIBILITY FOR ANY LOSS OR DAMAGE SUFFERED AS A RESULT OF (OR CONNECTED WITH) THE USE OR MISUSE OF THE CAD DATA SUPPLIED FOR INFORMATION ONLY. ONCE THE DATA IS INTRODUCED INTO YOUR OWN CAD OR OTHER SYSTEM, COL-MET ENGINEERED FINISHING SOLUTIONS CAN TAKE NO RESPONSIBILITY FOR ITS ACCURACY.

DRAWN	KW	7/20/2017
MODELER	MGF	1/4/2017
SOLD BY	Salesman	
VOLTAGE: Enter Voltage		
MATERIAL 18 GA. GALV. STEEL		
FINISH		
DO NOT SCALE DRAWING		

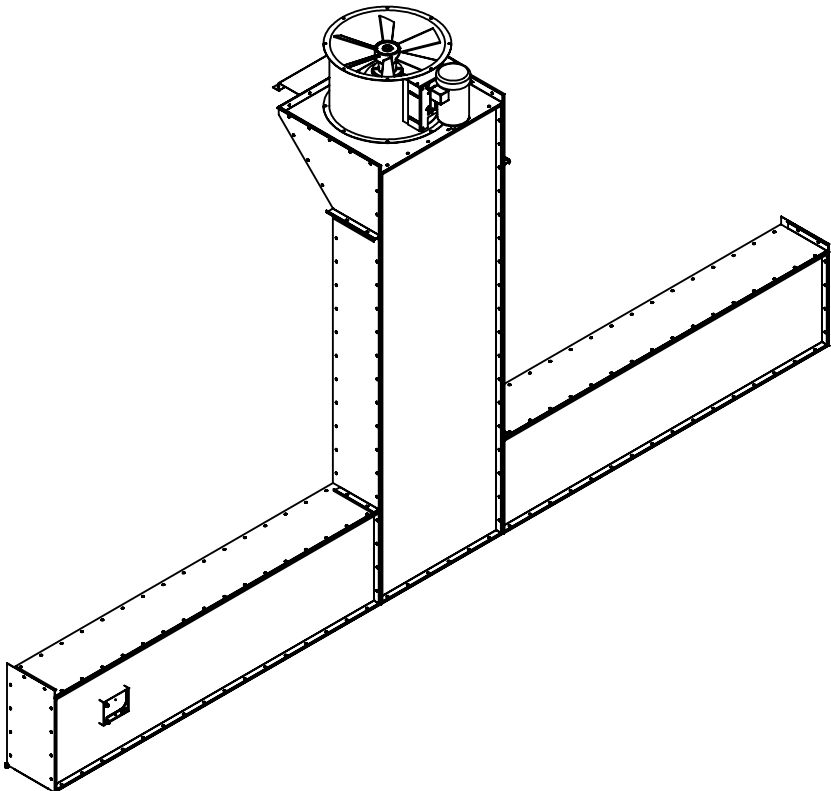
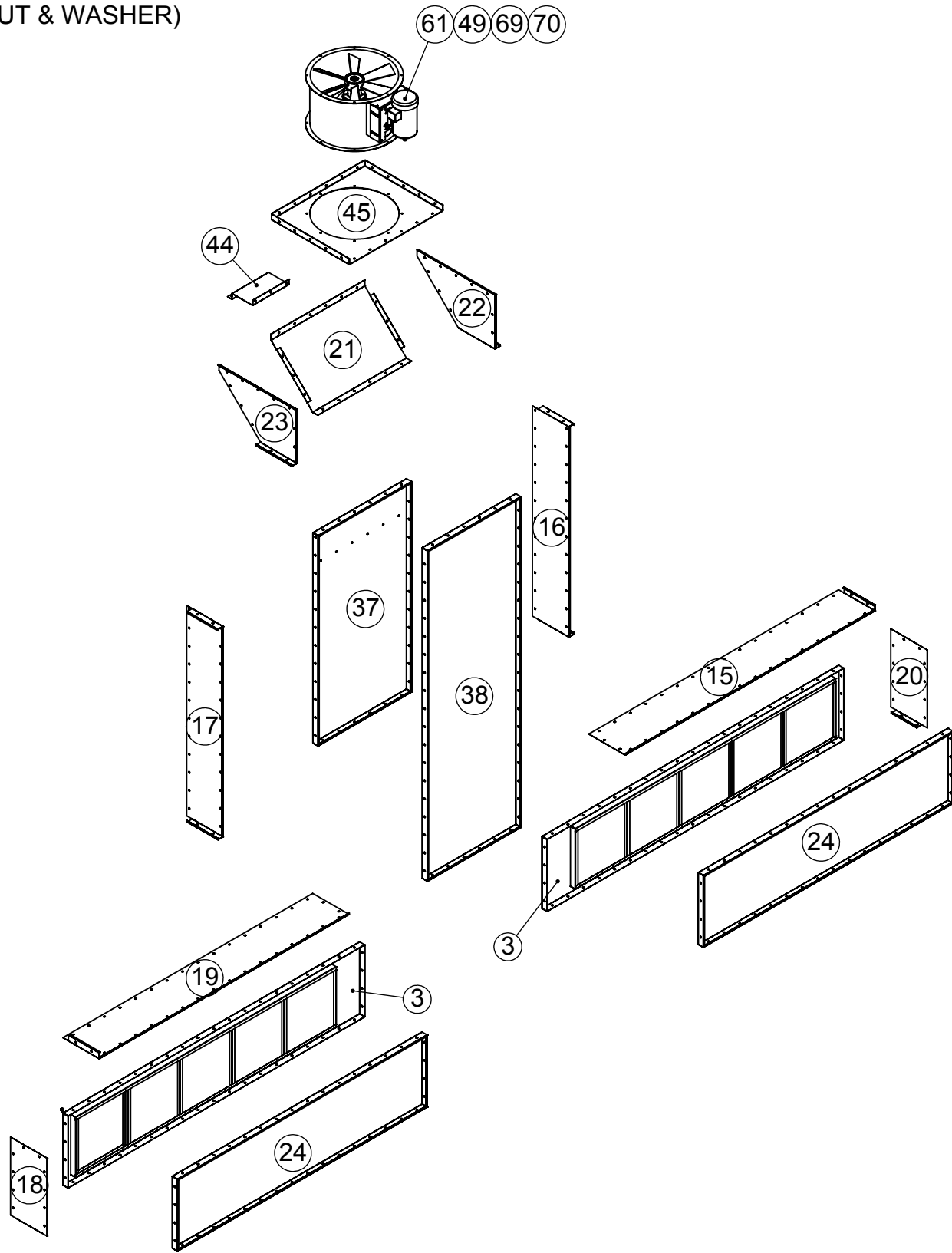
COL-MET
 ENGINEERED FINISHING SOLUTIONS
 2975 DISCOVERY BLVD.
 ROCKWALL, TX 75032
 PHONE (972) 772-1919
 FAX (972) 772-1833
 WWW.COLMETS.COM

COL-MET
 Engineered Finishing Solutions

JOB #	Project Number	
DISTRIBUTER:	Enter Distributor	
CUSTOMER	Enter End User	
SIZE	DWG. TITLE	REV
B	ESD-14-09-26-P-DT-S	
SCALE: 1:40		SHEET 5 OF 8

EXHAUST CHAMBER

USE 3/8"Ø HARDWARE
WHEN INSTALLING FAN
(BOLT, NUT & WASHER)

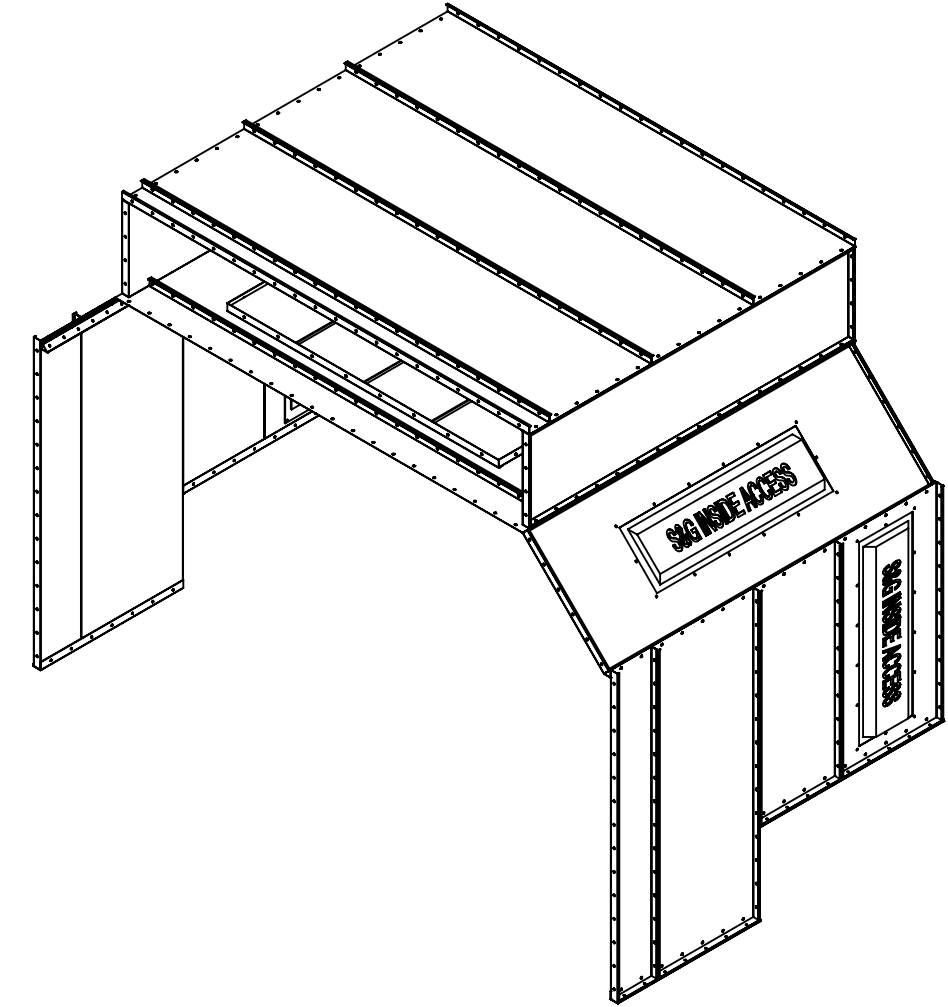
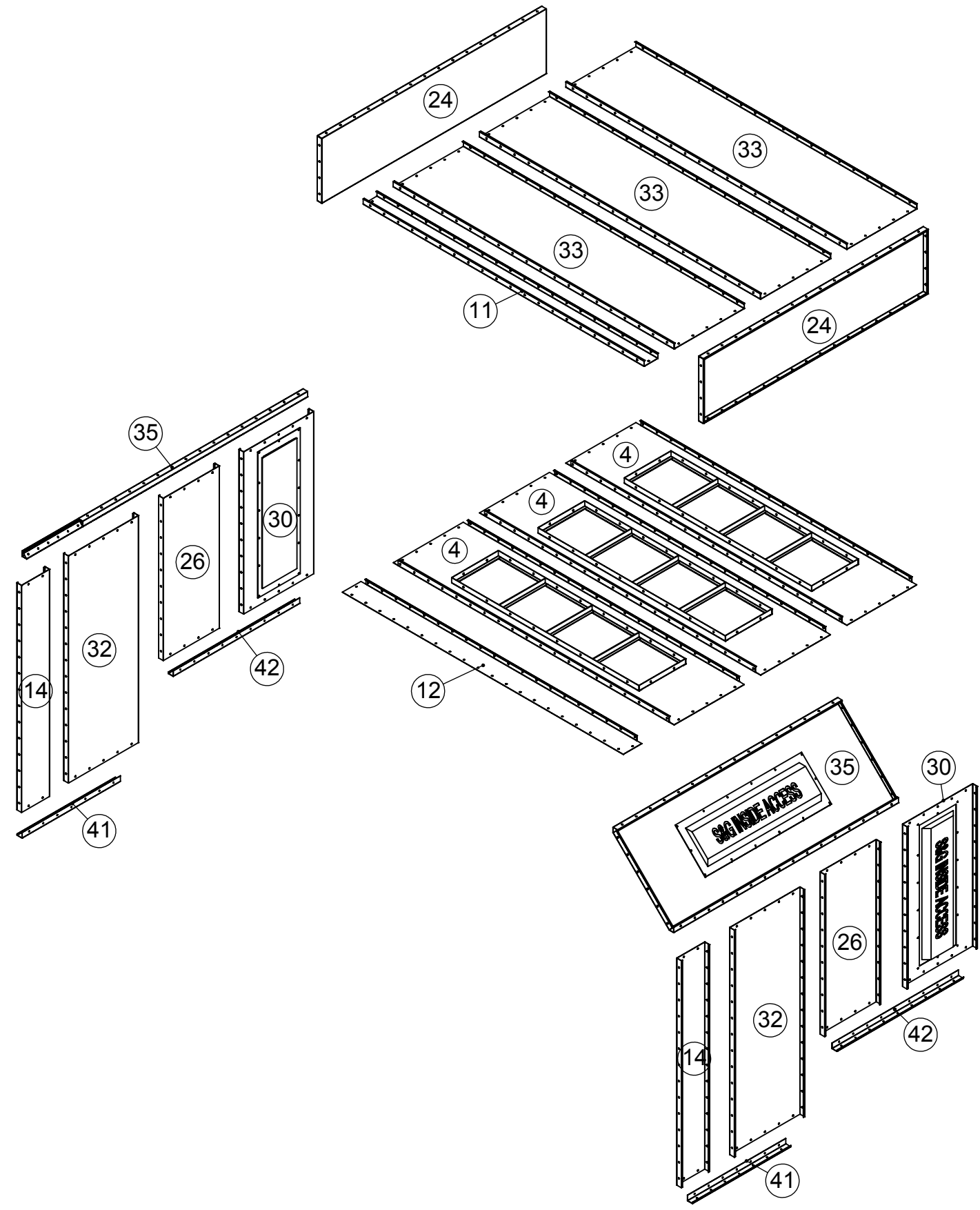


<p>PROPRIETARY AND CONFIDENTIAL</p> <p>THIS DRAWING, THESE SPECIFICATIONS, AND THE IDEAS CONTAINED HEREIN ARE THE EXCLUSIVE PROPERTY OF COL-MET ENGINEERED FINISHING SOLUTIONS. THEY SHALL BE RETURNED UPON DEMAND. NO PERSON SHALL COPY, USE, OR DISCLOSE THIS DRAWING, THESE SPECIFICATIONS, OR THE IDEAS CONTAINED HEREIN WITHOUT THE EXPRESS CONSENT OF COL-MET ENGINEERED FINISHING SOLUTIONS. IT IS THE RESPONSIBILITY OF THE RECIPIENT TO CHECK ALL DETAIL INFORMATION AGAINST THE CONTRACT DOCUMENTATION. COL-MET ENGINEERED FINISHING SOLUTIONS ACCEPTS NO LIABILITY OR RESPONSIBILITY FOR ANY LOSS OR DAMAGE SUFFERED AS A RESULT OF (OR CONNECTED WITH) THE USE OR MISUSE OF THE CAD DATA SUPPLIED FOR INFORMATION ONLY. ONCE THE DATA IS INTRODUCED INTO YOUR OWN CAD OR OTHER SYSTEM, COL-MET ENGINEERED FINISHING SOLUTIONS CAN TAKE NO RESPONSIBILITY FOR ITS ACCURACY.</p>	DRAWN: KW 7/20/2017 MODELER: MGF 1/4/2017 SOLD BY: Salesman	COL-MET ENGINEERED FINISHING SOLUTIONS 2975 DISCOVERY BLVD. ROCKWALL, TX 75032 PHONE (972) 772-1919 FAX (972) 772-1833 WWW.COLMETS.COM	JOB # Project Number	
	VOLTAGE: Enter Voltage		DISTRIBUTER: Enter Distributor	
	MATERIAL: 18 GA. GALV. STEEL		CUSTOMER Enter End User	
	FINISH: DO NOT SCALE DRAWING		P.O.# Enter Cust. PO# FILENAME: ESD-14-09-26-P-DT-S	SIZE: B DWG. TITLE: ESD-14-09-26-P-DT-S REV:

SECTION D

D
C
B
A

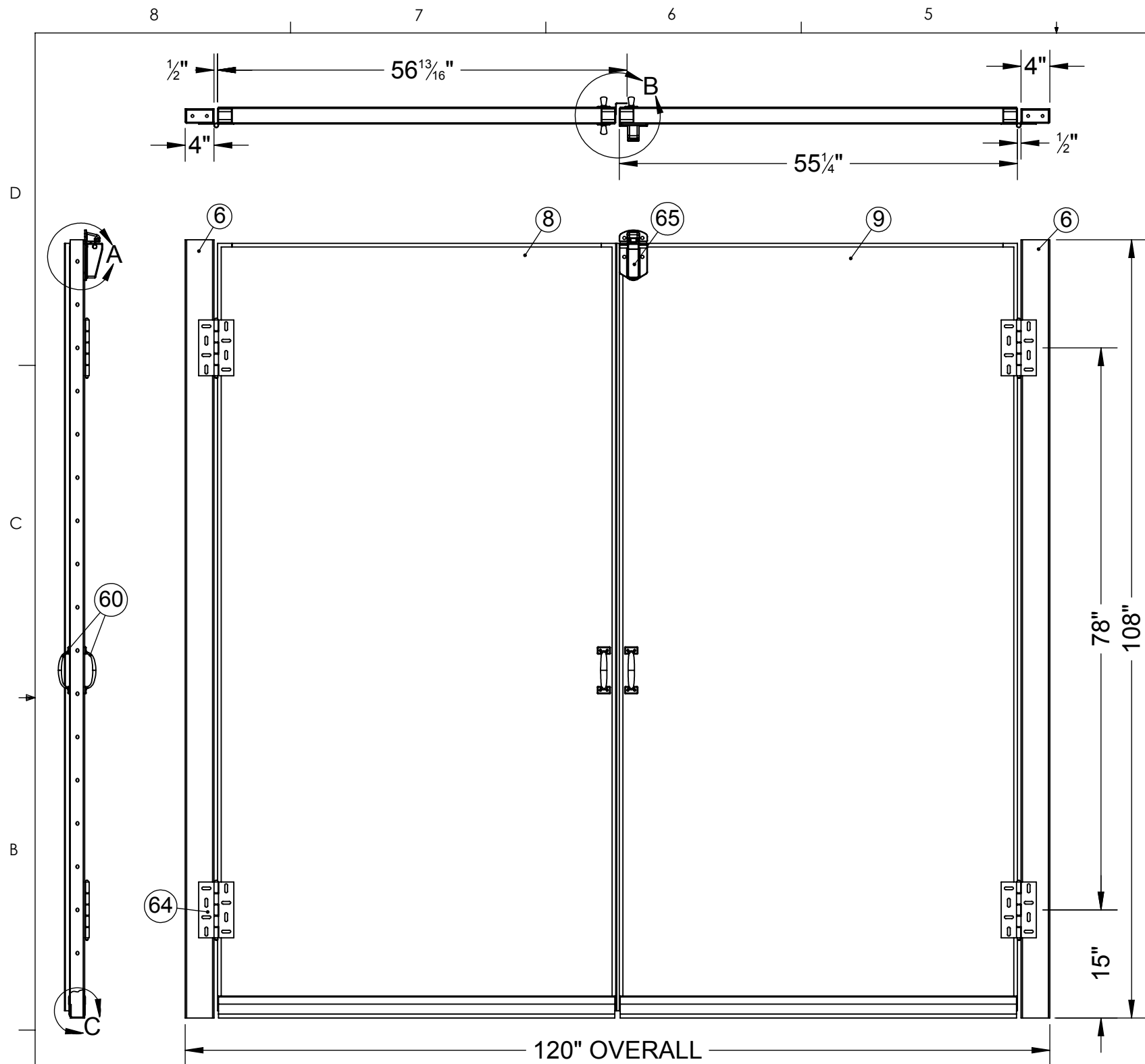
D
C
B
A



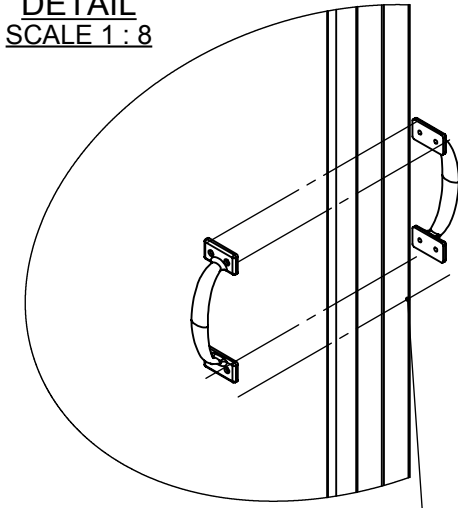
<p>PROPRIETARY AND CONFIDENTIAL</p> <p>THIS DRAWING, THESE SPECIFICATIONS, AND THE IDEAS CONTAINED HEREIN ARE THE EXCLUSIVE PROPERTY OF COL-MET ENGINEERED FINISHING SOLUTIONS. THEY SHALL BE RETURNED UPON DEMAND. NO PERSON SHALL COPY, USE, OR DISCLOSE THIS DRAWING, THESE SPECIFICATIONS, OR THE IDEAS CONTAINED HEREIN WITHOUT THE EXPRESS CONSENT OF COL-MET ENGINEERED FINISHING SOLUTIONS. IT IS THE RESPONSIBILITY OF THE RECIPIENT TO CHECK ALL DETAIL INFORMATION AGAINST THE CONTRACT DOCUMENTATION. COL-MET ENGINEERED FINISHING SOLUTIONS ACCEPTS NO LIABILITY OR RESPONSIBILITY FOR ANY LOSS OR DAMAGE SUFFERED AS A RESULT OF (OR CONNECTED WITH) THE USE OR MISUSE OF THE CAD DATA SUPPLIED FOR INFORMATION ONLY. ONCE THE DATA IS INTRODUCED INTO YOUR OWN CAD OR OTHER SYSTEM, COL-MET ENGINEERED FINISHING SOLUTIONS CAN TAKE NO RESPONSIBILITY FOR ITS ACCURACY.</p>	<p>DRAWN: KW 7/20/2017</p> <p>MODELER: MGF 1/4/2017</p> <p>SOLD BY: Salesman</p>	<p>COL-MET ENGINEERED FINISHING SOLUTIONS 2975 DISCOVERY BLVD. ROCKWALL, TX 75032 PHONE (972) 772-1919 FAX (972) 772-1833 WWW.COLMETS.COM</p>	<p>JOB # Project Number</p>		
	<p>VOLTAGE: Enter Voltage</p>		<p>DISTRIBUTER: Enter Distributor</p>		
	<p>MATERIAL: 18 GA. GALV. STEEL</p>	<p>COL-MET Engineered Finishing Solutions</p>		<p>CUSTOMER Enter End User</p>	
	<p>FINISH:</p>	<p>P.O.# Enter Cust. PO#</p>	<p>SIZE: B</p>	<p>DWG. TITLE ESD-14-09-26-P-DT-S</p>	<p>REV</p>
<p>DO NOT SCALE DRAWING</p>	<p>FILENAME: ESD-14-09-26-P-DT-S</p>	<p>SCALE: 1:40</p>	<p>SHEET 7 OF 8</p>		

8 7 6 5 4 3 2 1

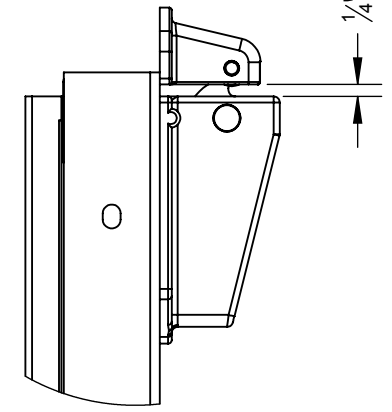
8 7 6 5 4 3 2 1



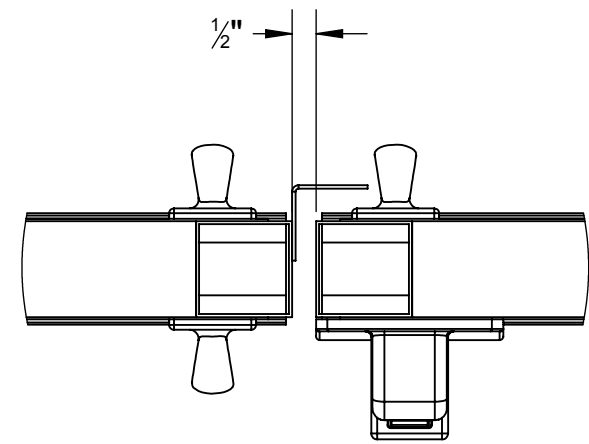
**HANDLE
INSTALLATION
DETAIL
SCALE 1 : 8**



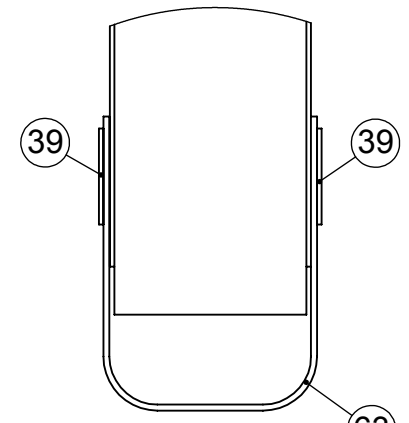
5/16" Ø x 3/4" HEX HEAD
UNSLOTTED SELF DRILLING
SCREW QTY (16)



**DETAIL A
LATCH DETAIL
SCALE 1 : 4**



**DETAIL B
SECTION THRU
DOOR CENTER
SCALE 1 : 4**



**DETAIL C
THRESHOLD
SEAL DETAIL
SCALE 1 : 2**

SEE INSTALLATION MANUAL FOR PROPER DOOR GASKET INSTALLATION

<p>PROPRIETARY AND CONFIDENTIAL</p> <p>THIS DRAWING, THESE SPECIFICATIONS, AND THE IDEAS CONTAINED HEREIN ARE THE EXCLUSIVE PROPERTY OF COL-MET ENGINEERED FINISHING SOLUTIONS. THEY SHALL BE RETURNED UPON DEMAND. NO PERSON SHALL COPY, USE, OR DISCLOSE THIS DRAWING, THESE SPECIFICATIONS, OR THE IDEAS CONTAINED HEREIN WITHOUT THE EXPRESS CONSENT OF COL-MET ENGINEERED FINISHING SOLUTIONS. IT IS THE RESPONSIBILITY OF THE RECIPIENT TO CHECK ALL DETAIL INFORMATION AGAINST THE CONTRACT DOCUMENTATION. COL-MET ENGINEERED FINISHING SOLUTIONS ACCEPTS NO LIABILITY OR RESPONSIBILITY FOR ANY LOSS OR DAMAGE SUFFERED AS A RESULT OF (OR CONNECTED WITH) THE USE OR MISUSE OF THE CAD DATA SUPPLIED FOR INFORMATION ONLY. ONCE THE DATA IS INTRODUCED INTO YOUR OWN CAD OR OTHER SYSTEM, COL-MET ENGINEERED FINISHING SOLUTIONS CAN TAKE NO RESPONSIBILITY FOR ITS ACCURACY.</p>	<p>DRAWN: KW 7/20/2017</p> <p>MODELER: MGF 1/4/2017</p> <p>SOLD BY: Salesman</p>	<p>COL-MET ENGINEERED FINISHING SOLUTIONS 2975 DISCOVERY BLVD. ROCKWALL, TX 75032 PHONE (972) 772-1919 FAX (972) 772-1833 WWW.COLMETS.COM</p>	<p>JOB #</p> <p>Project Number</p>		
	<p>VOLTAGE:</p> <p>Enter Voltage</p>		<p>DISTRIBUTER:</p> <p>Enter Distributor</p>		
	<p>MATERIAL:</p> <p>18 GA. GALV. STEEL</p>	<p>FINISH:</p>	<p>COL-MET Engineered Finishing Solutions</p>	<p>CUSTOMER</p> <p>Enter End User</p>	
	<p>DO NOT SCALE DRAWING</p>	<p>FILENAME:</p> <p>ESD-14-09-26-P-DT-S</p>		<p>P.O.# Enter Cust. PO#</p>	<p>SIZE: B</p> <p>DWG. TITLE: ESD-14-09-26-P-DT-S</p>