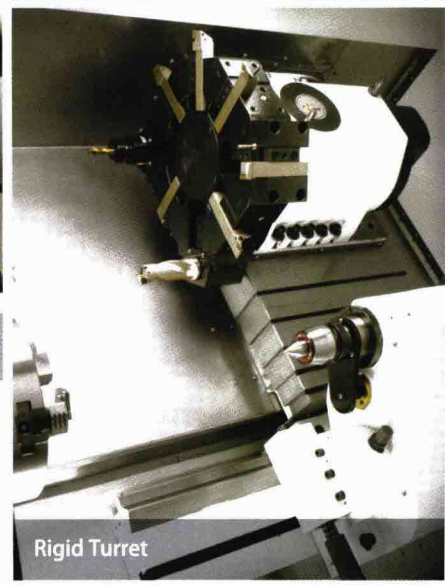
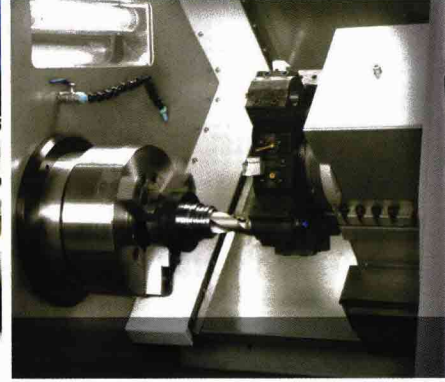
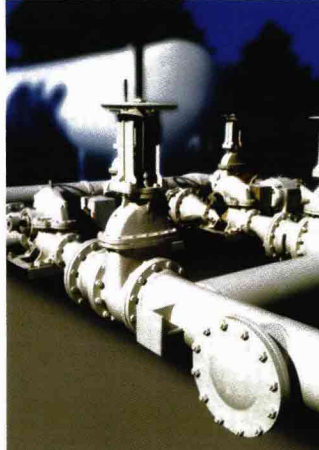


# DX Series

## CNC Turning Centres

### Higher Ruggedness with Perfection



**DX 250**  
(700/1000)

**DX 350**  
(700/1000)

**DX 350**  
(1500)

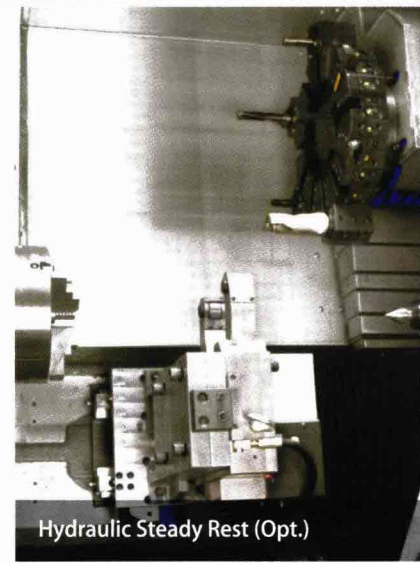
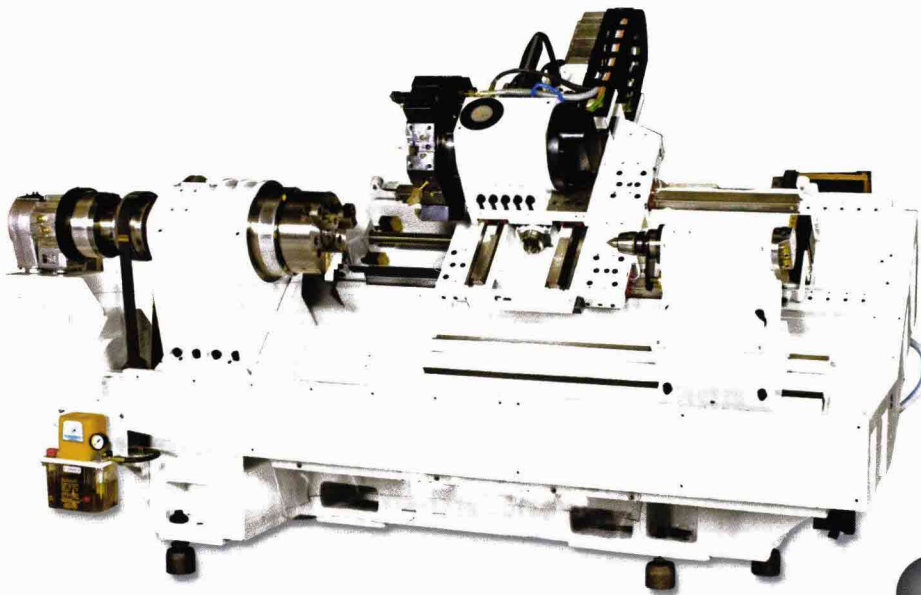


Producing world class products delivering output workpieces quickly, accurately and with minimum non productive time DX 250 / DX 350 machines are designed for robust machining of bigger components covering a range of engineering components requiring higher cutting load with better dampening capacity.

45° Slant Bed **Monoblock Structure** with improved bed twisting rigidity.

Wide precision class linear motion (Roller Type) guideways on both axes with directly coupled ballscrews enables to enhance machining capability with productivity boosting capacity to take higher cutting parameters maintaining consistent accuracy for components even with higher hardness.

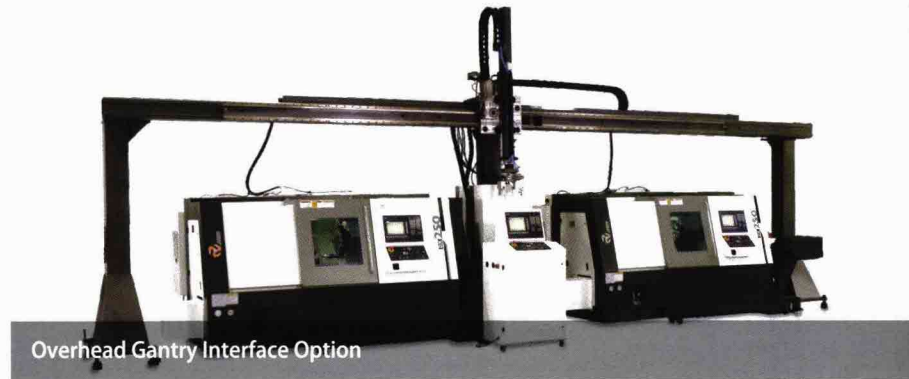
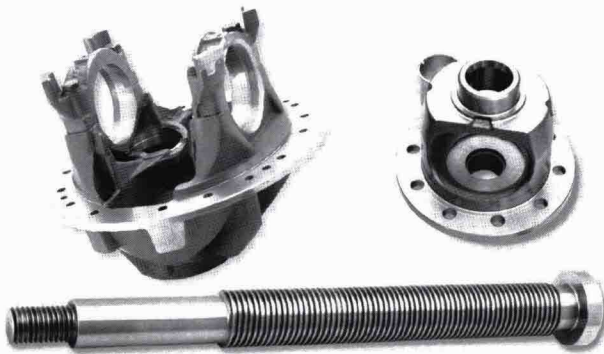
Wide range of flexibility for interfacing various productivity improving options such as Digital-Tailstock, Built-in High speed motor, Steady-Rest, Automatic tool setting, Capability for Heavy capacity spindle with bigger bore, Gear-Box for higher torque at lower rpm and many more. More atomization by Interphasing DX Series machine with Over-Head Gantry system / Robotic arm can be incorporated for High Speed Unmanned Mass Production



Hydraulic Steady Rest (Opt.)



Monoblock Structure for improved rigidity



Overhead Gantry Interface Option

**Specifications**

	DX 250 (700)	DX 250 (1000)	DX 350 (700)	DX 350 (1000)	DX 350 (1500)
Chuck Size	254 mm		310 mm		
Max. Turning Dia.	470 mm		470 mm		
Max. Turning Length	700 mm	1000 mm	700 mm	1000 mm	1500 mm
Travel ( X / Z Axes )	250 / 700 mm	250 / 1000 mm	250 / 700 mm	250 / 1000 mm	250 / 1700 mm
Rapid Feed ( X / Z Axes )	24 m/min		24 m/min		
Spindle Power ( 30 min. / Cont. Rating )	16 / 12 kW (A,6)		25,5 / 18,5 kW (A,8)		
Spindle speed range	50 – 3500 rpm		50 – 2500 rpm		
Max. Bar capacity	52 mm		65 mm		
Tooling System	8 - St. Bi-Directional Turret		8 - St. Bi-Directional Turret		
Tailstock ( Dia. / Stroke )	85 / 120 mm		85 / 120 mm		130 / 150 mm