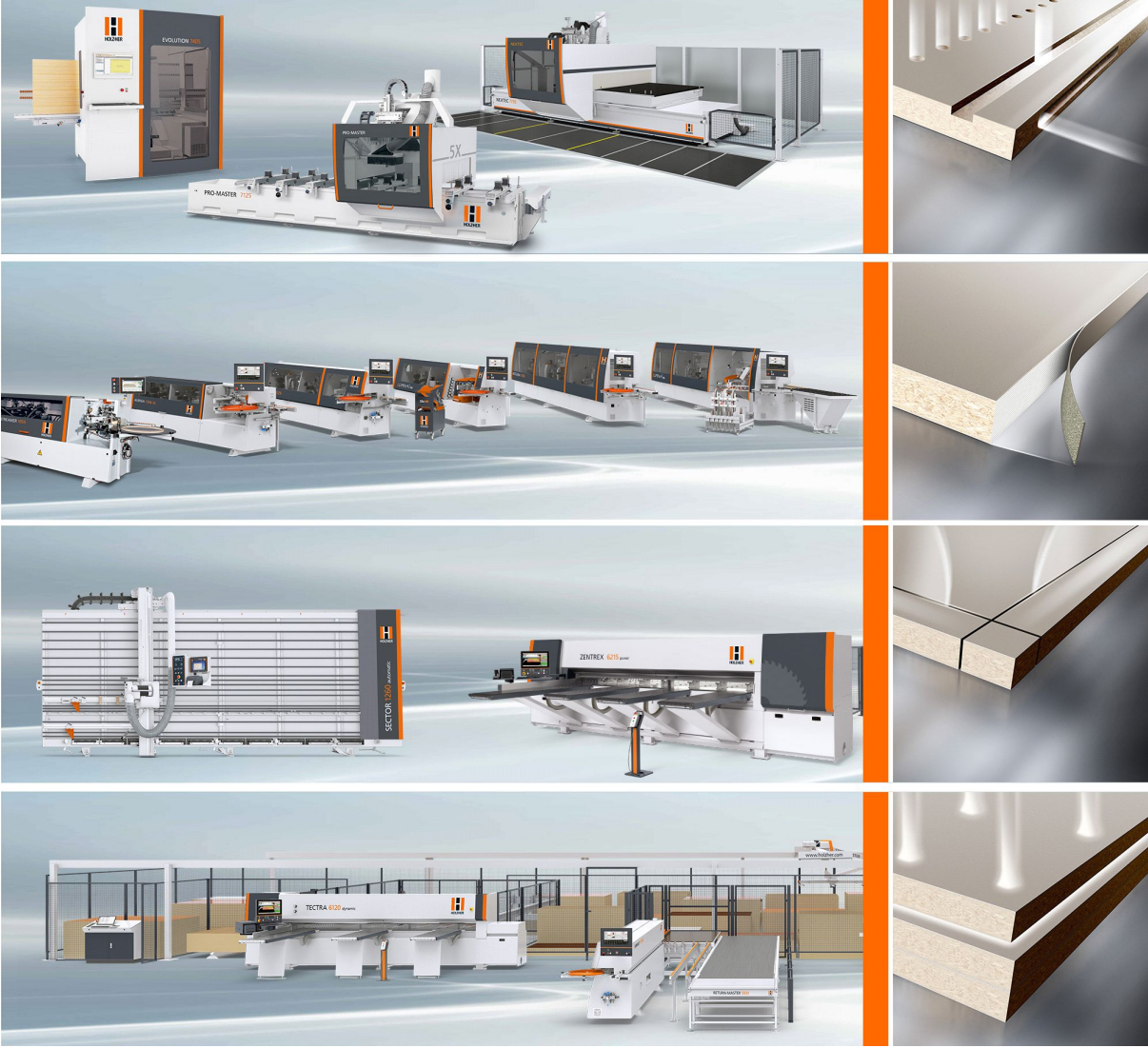


Precision and productivity for the panel processing
Everything from a single source. Everything 100%!



Offer
HOLZ-HER Edgebander LUMINA 1598 performance

**Hillbilly Bob's Test Account
22010 Hughsville Rd
HUGHESVILLE MO 65334
USA**



Your benefit at a glance

LUMINA series

Torsionally rigid, welded machine stands, transport chain with round and flat guides, incl. intelligent transport rail lubrication, **pneumatic locking rollers for minimum workpiece intervals at machine entry**, motor-drive pressure bridge adjustment, **infinite feed rate 10 - 25 m/min**, ensure maximum ease of operation, long-term productivity, precision and operating reliability.

Incl. synchronized driven belt bridge

Control features and operation

With rotating and pivoting control panel, dust-proof.

Large program memory for complete capture of all operating data, service messages in clear text. Fully automatic control of processing machines at the touch of a button using **NC servo-axes**.

Ltronic laser edging activation unit (changing station)

The Ltronic unit activates the functional layer on the laser edging under electronic control and is immediately ready for use without any heat-up time.

Visually perfect results - tone in tone with invisible joints.

- Maximum energy efficiency
- Silent processing
- No heat-up time
- No cleaning work

Glu Jet hybrid technology (changing station) with GJ702 PUR 2K (change unit)

Highly flexible glue application with **patented nozzle for invisible zero joints**. Standard equipment allows use of PUR glue without expensive and time-consuming auxiliary equipment. Automatic cleaning feature for glue system at the touch of a button.

Incl. automatic glue fill level control

Machine design - 100% repetition accuracy

Our solid, state-of-the-art processing machines are subject to continuous development based on our 50 years of experience with edgebanders, guaranteeing high quality processing of your edges and optimum product quality of your finished furniture.

Tool design

Diamond tipped, state-of-the-art cutting tools with integrated chip removal, all matched perfectly to your range of application.

Optional with completely integrated multi-function tools.

Accessories

Comprehensive line of accessories ranging from air cushion table in entry area to electronically controlled spraying units to make subsequent retouching work completely superfluous. Modular design makes it easy to add accessories.

Offer

HOLZ-HER 124 Crosslake Park Drive Mooresville, NC 28117

Your HOLZ-HER expert:

Hillbilly Bob's Test Account
22010 Hughsville Rd
HUGHESVILLE MO 65334
USA

WEINIG HOLZ-HER USA INC.
124 CROSSLAKE PARK DRIVE
MOORESVILLE NC 28117
USA
Tel: 704 799 0100
e-mail: dispatch@weinig.com

File: **588333/4**
Your phone no.: **+1 704-609-7192** Your fax no.:
Your e-mail: **christian.smedberg@weinig.com**

Customer: **2016160**
Date: **10/4/2024**
Our ref.: **/JH**



HOLZ-HER Edgebander LUMINA 1598 performance

BASIC MACHINE LUMINA 1598 performance
with synchronized driven belt bridge

Total price for you

\$ 265,900.00

Equipment according to following technical specification.

Commercial terms and conditions

TIME OF DELIVERY

Delivery date approx.

TERMS OF DELIVERY

Quoted price is F.O.B. [free on board], Charlotte, NC
Incoterms 2020

VALUE ADDED TAX

Price does not include applicable taxes and is valid for
30 days.

PAYMENT

30 % with order
60 % prior to shipment
10 % at installation

COMMISSIONING

Installation and training included.

Best regards

HOLZ-HER US Inc.

Technical Specification

HOLZ-HER Edgebander LUMINA 1598 performance



BASIC MACHINE

5052332*

BASIC MACHINE LUMINA 1598 performance with synchronized driven belt bridge

Base frame design for **high rigidity, welded version**
Surface hardened round steel guides for pressure bridge
adjustment with direct drive.

With **motorized pressure** beam adjustment
Central suction connection in the joining area
Central extraction connections for the post-processing units

Integrated switch cabinet, easily accessible
Integrated chip catch box on the end of the machine

Pivoting and tilting **control panel for ergonomic adjustment** at
eye height

Integrated stowage area for supply bottles for spraying unit and cleaning system
Chain guide rail lubricated automatically
Pneumatic locking roller for minimum workpiece interval at machine entry
Pressure bridge consisting of high strength, rigid U-channels for smooth workpiece transport
Light barrier for sensing workpieces

Large, space-saving and acoustically insulated guard hood with **noise-absorbing safety cover** above post-processing area
Heavy duty drive motor for jerk-free transport of workpieces with workpiece chain
Transport chain runs on precision half-round flat guides, chain pads on transport chain with high lug for perfect grip on workpieces

5053897*

**LED operating mode indicator**

automatic, optical LED indicator for various operating modes

Top light:

white = standby
orange = feed on
yellow = refill glue or edging
green = workpieces in production
red = error message

Bottom light:

green = infeed stop up - workpiece infeed possible
off = infeed stop down - no infeed possible

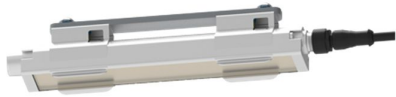
5058499

Pull-out workpiece support

For perfect workpiece support, self-supported mounted on machine.
Extendable up to 1800 mm.

EQUIPMENT VARIANTS AND ACCESSORIES

5060027



LED-Lamps (3 pc) for the infeed area / post-processing area
Modern LED technique with tempered, break-proof glass

5012423*



Automatic lubrication of the transport chain

Intelligent automatic transport chain lubrication. Sensor-controlled unit, for metering lubricate to match load.

5013911*



Oil injection device for lubrication of articulations and pins
with an hour meter

5049913

**Infrared heater ZH701**

The workpiece edge is warmed up before the adhesive application for a better adhesion.

5042211

**iTronic - Adaptive pressure and glue quantity control**

automatic, program controlled fine adjustment for optimum adjustment to edge thickness, edge materials and glue types which guarantee best process results.

Automatic package consists of:

- automatic glue quantity control
- adaptive guillotine
- automatic pressure section
- monitoring of remaining glue quantity
- automatic PUR purge system

TECHNICAL SPECIFICATIONS

LUMINA INDUSTRY 1598

Edgebander for edging and post-processing of panel-type materials

Edging thickness, rolled edging: 0.4 - 3 mm (depending on material)

Edging thickness, strip edging:
 standard 15 mm
 optional 20 mm with BF701

Edging height: max. 65 mm
 Workpiece thickness: 8 - 60 mm
 Workpiece width: min. 65 mm
 Workpiece length: min. 140 mm
 Feed rate: infinite 10 - 25 m/min

ELECTRICAL

5045999
Electrical for variable feed 200/230 V, 50/60 Hz, 2.2 kW

OPERATION

5068932*



Edge Control PPC 322 W

with 21,5" color touchscreen 16:9

Powerful controls and simplest machine operation
for **efficient machine setup and re-setting.**

Rotatable and tiltable operating control at eye level with Windows-like user interface, all information is displayed in plain text and/or graphics, with extensive program store.

External USB-interface

Network ready



IntelliSet

The intelligent tool correction allows intuitive adjustment of all milling and scraper operations. The operator can see graphically at any time which corrections are being made in which direction. The values entered at the control for horizontal and vertical tool infeed are automatically converted to the actual axis values in the background. Test workpieces are thus a thing of the past.

**fa.s.t.**

fa.s.t = fast setting technology
makes it possible for edgebanders to perform various operations simultaneously.

Units can be switched on intelligently without having to empty the machine before running a set-up process, making it possible to fully utilize the entire capacity.

The locking roller at the machine infeed controls the setup gap dynamically.

5045325*

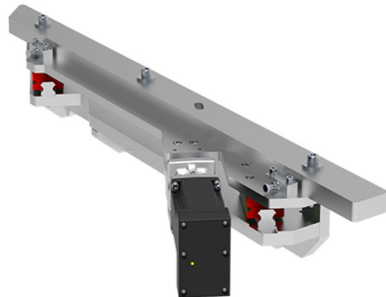
**ECO MODE+**

This power-saving mode is an automatic **stand-by mode**, which puts all drives out of operation as soon as no workpiece is entered into the machine. The motors correspond to the new energy efficiency class IE 3. If a workpiece is not entered into the machine over a longer time period (6 minutes) the heater of the glue application system automatically shuts down. No more energy is consumed by the machine.

INFEEED AREA

5058398

*



Motorized adjustment of long infeed fence automatically adjustable through the control panel to adjust depth of cut

AIR CUSHIONED TABLE

5062587



Air cushioned table BS701 (230 V 60 Hz)

table with air cushions for an easy and gentle movement of the material at the infeed area of the machine

Fan control via control panel

length: 1800 mm, **width:** 600 mm

(incl. long infeed fence)

with height adjustable frame base for alignment to the infeed height of the machine (880 - 900 mm)

5064024



Guide unit BS703

for end edgebanding on narrow parts

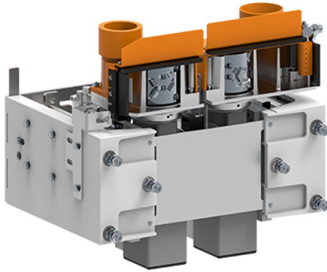
Workpiece thickness: min. 10 mm, max. 60 mm

workpiece length: ca. 140 - 250 mm

max. feed speed: 12 m/min

PRE-MILLING UNIT

5058135



Pre-milling unit FG701 MOT2 HSK32R 220 V

(2 x 2.0 kW, 200 Hz, 8000 - 12000 min-1)

with 2 plunge-in controlled trimming units for joining panel edges, 1x operating in forward direction, 1x in rearward direction, **with motorized height adjustment** of the tool via 2 NC servo drives, infinitely variable speed control, 8000 - 12000 min-1, max. milling thickness: 3 mm

Advantage HSK 32R tool clamping:

The increased concentricity accuracy of 20 μ ensures a smooth running of the tool and thus a higher milling quality comparable to a hydraulic clamping tool.

Low-noise operation in use and idling -3 dB(A)

Chip capture rate up to 99% through AirStream technology.
This means significantly less double cutting, longer tool life and less cleaning effort.

35° axis angle ensures excellent cutting quality.

Resharpener zone = 1.5 mm diamond,
up to 3-4 re-sharpenable (depending on material)

5058186*



Diamond cutter \varnothing 100 x 63 x 30 mm, **3+3 teeth, left hand**

Air Stream System (HOLZ-HER / LEUCO patent)

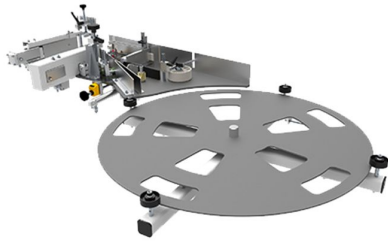
HSK32R

For pre-milling unit **FG701**

5058187*
Diamond cutter Ø 100 x 63 x 30 mm, **3+3 teeth, right hand**
Air Stream System (HOLZ-HER / LEUCO patent)
HSK32R
For pre-milling unit **FG701**

EDGE FEEDER

5053747*



Edge feeder **MG701 SYNCHRO**

automatic transport of roll and strip products

max. load capacity: 150 mm

Synchronous drive with adjustable edge protrusion for cut length edging

for coils: max. edge thickness 3 mm (material dependent)

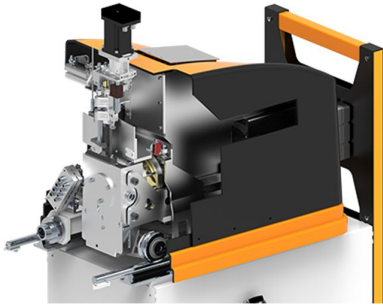
forward cut up to max. 65 mm (material dependent)

max cross section 135 mm² (material dependent)

support table for coils Ø 820 mm

GLUE APPLICATION

5051048

**Glue application system Glu Jet GJ702 PUR 2K**

Motorized, automatic adjustment of gluing height (tracing nozzle)

Glu Jet hybrid technology

Processing of PUR adhesives

Glue applied by means of nozzle technology

Incl. hopper for cartridges **for cartridge of 2 kg PUR adhesive**

Incl. hopper for cleaner granules

Incl. automatic rinse function directly at the control panel through separate rinse channel

Automatic glue temperature reduction according to time

Incl. control of glue fill level

Equipment for change unit:

Incl. change carriage

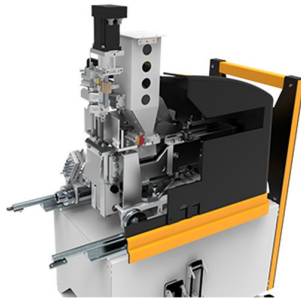
Incl. quick-change coupling device

Incl. HSK adapter for the aggregate

Incl. automatic aggregate recognition

SECOND GLUE STATION

5052845



Glue application system Glu Jet GJ302 automatic

(2,3 kW, 50 Hz)

motorized, automatic adjustment of gluing height (tracing nozzle)

Glue Jet hybrid technology

Processing of EVA and PUR adhesives

Adhesive in cartridge or granules form

Processing of neutral and coloured adhesives

Glue applied by means of nozzle technology

Heat-up time: 3 minutes

Incl. hopper for cartridges: 5 cartridges (approx. 2 kg)

Incl. hopper for glue granules: (approx. 2 kg)

Incl. automatic reloading of glue

Incl. automatic rinse function directly at the control panel through separate rinse channel

Automatic glue temperature reduction according to time

Equipment for change unit:

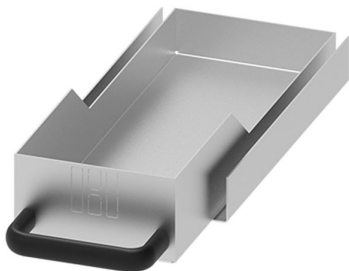
Incl. change carriage

Incl. quick-change coupling device

Incl. HSK adapter for the aggregate

Incl. automatic aggregate recognition

5040211*



Glue Jet rinse hopper

to collect glue residues during rinse procedure

Heat-resistant non-stick silicone insert included

5051569



additional edge coil support for coiled edges
suitable for change carriage

LASER EDGE EXCHANGE UNIT

5045641



Ltronic LT702 Laser Edging Unit

Electronically controlled unit for activation of functional layer on laser edges

Including laser edging database. This includes all common coextruded and subsequently coated laser edging with standard touchscreen for easy operator selection.

Incl. changeover carriage

Incl. quick-change coupling device

Incl. HSK adapter for device

Incl. automatic device recognition

Incl. water cooling system

Incl. electronic controlled air blower

Incl. voltage stabilizer

(for power grids without neutral conductor and for special grids, an isolating transformer is required - on request)

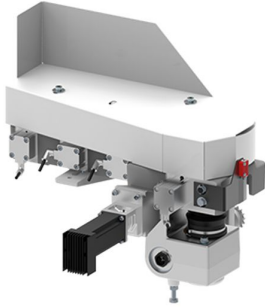
Panel height with standard NIR Module = 8 - 23 mm

Edging thickness max. 3 mm

6 kW max. load

PRESSURE UNIT

5061645*

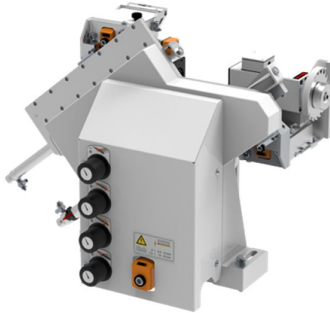


Pressure section DW701 MOT

Motorized adjustment to the edge thickness directly from the control panel, with 4 sep. contact-controlled pressure rollers for clean edge pressing on carrier panel, first roller automatic driven synchronous to the feed speed, 3 support pressure roller

END TRIMMING UNIT

5058122*



End-trimming KA702 pneumatic

(2 x 0.75 kW, 200 Hz, 12,000 min-1)

Pneumatic pivoting feature 0/10° for coils and strips:

max. edge thickness: 20mm

(depending on material and feed speed),

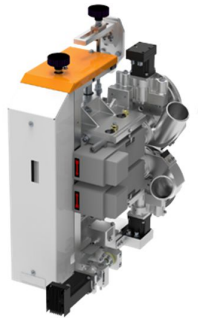
hardened and precision-ground linear guides each, incl. 2 noise

reduced TC-sawblades altern. teeth, Ø 120 mm, Z 22, incl. 2

extraction hoods

FLUSH TRIMMING

5060917



Trimming unit BF701 MOT 3 (2 x 2.0 kW, 200 Hz, 12000 min-1)

Flush trimming unit until 20 mm edge thickness

Motorized adjustment of the complete unit.

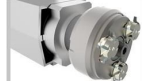
Motorized adjustment of the vertical tracer rollers (top and bottom unit) for the automatic fine adjustment of the overlapping edging via NC servo drives.

MULTIFUNCTION

5043272



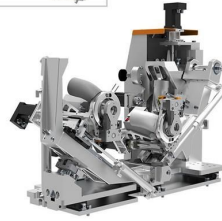
FR701 Multi



FF701 Multi



ZK701 Multi



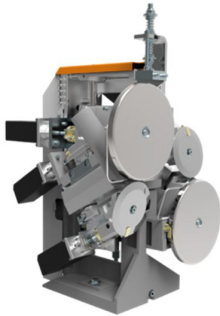
Multipurpose package

Fully automatic and complete multi tool equipment with multipurpose tools and tooling revolvers for:

- FR701 Multi
- FF701 Multi
- ZK701 Multi

MULTIFUNCTIONAL TRIMMING UNIT

KT 2983219



FR701 Cutter unit Multi with fully automatic multipurpose tool

100% repetition accuracy at the touch of a button based on zero-clearance mechanisms and 6 fully digital NC servo-axes.

Heavy duty floor-mounted machine with shock-absorbing mounts and large sensing rollers for perfect results even at high feed rates.

Machine adjustments on linear guides.

With standard blast nozzles in front of sensing rollers to blow away chips in front of sensing areas.

Horizontal sensing with angular sensing rollers, developed especially for processing modern, high gloss edging.

Incl. diamond-multipurpose cutterhead with the following profiles:

flush trimming 8 mm

Radius 1,3 mm

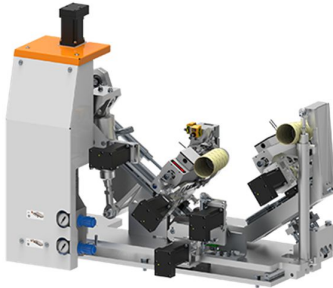
Radius 2 mm

Radius 3 mm

Chamfer 10°

CORNER COPY UNIT

KT 2983218



Form trimming unit FF701 MOT6 Multi with automatic tool revolver quattroForm

100% repetition accuracy at the touch of a button based on zero-clearance mechanisms and 6 fully digital NC servo-axes.

Includes two diamond tipped cutters with optimized chip removal. With automatic pendulum sensor for perfect copying results. Fully automatic pendulum sensor copies ends without material protrusion and leaves the optimum edge protrusion for the longitudinal edge for subsequent machining.

Machine adjustments on linear guides.
With standard blast nozzles in front of sensing rollers to blow away chips in front of sensing areas.

Including shelf program for optimum processing of shelves with rounded edges.

Incl. diamond tools with the profiles:

Radius 1,3 mm
Radius 2 mm
Radius 3 mm
Chamfer 10°

FINISHING

SCRAPER UNIT

KT 2983217



ZK701 Multi Scraper Unit Fully automatic multifunction revolver version

Heavy duty floor-mounted machine with shock-absorbing mounts and large sensing rollers for perfect results even at high feed rates.

Machine adjustment on linear guides.
With standard blast nozzles in front of sensing rollers to blow away chips in front of sensing areas.

Play-free mechanism and 8 fully digital NC servo-axes ensure 100% repetition accuracy at the touch of a button.

Including high gloss package for exact adjustment of tool depth when using high gloss panels with protective foil.

incl. reversible TC blades with following profiles:

Radius 1.3 mm - bottom 5041596

Radius 1.3 mm - top 5041597

Radius 2 mm - bottom 5039911

Radius 2 mm - top 5039913

Radius 3 mm - bottom 5039917

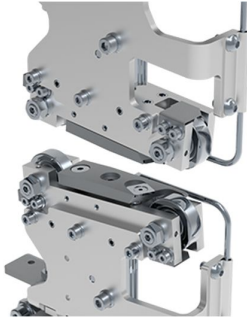
Radius 3 mm - top 5039918

Chamfer 10° - bottom

Chamfer 10° - top

SURFACE GLUE SCRAPER

5044891*



Surface glue scraper FK701

With pre and post tracing device for scraping out superfluous glue on the complete panel length for a clean glue line.

Pneumatic top shift facility (shifting range 20 mm)

incl. 2 blow nozzles,

incl. 2 HW turnover knives (4-fold),

incl. dust extraction hood

BUFFING

5044429



Buffing unit 1851K, oscillating (2 x 0.2 kW, 220 V, 1,400 min⁻¹)

For edge cleaning and polishing, incl. 2 textile buffing wheels, incl. plunge-in control, tilt range 0 - 5°

5042443 (400V) 5042444 (200-230V)*

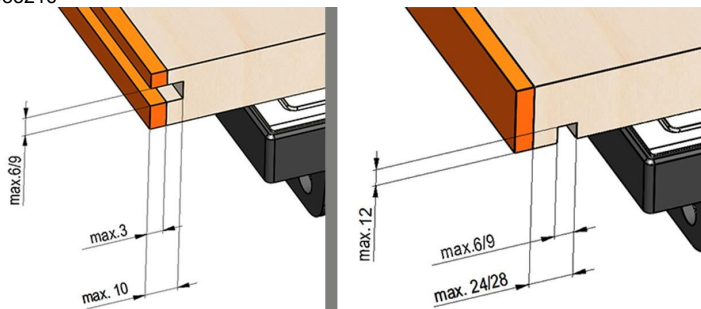


Corner buffing unit ES701

For edge cleaning and polishing of vertical edge
incl. textile buffing wheels and plunge-in control

**GROOVING UNIT (free space)**

KT 2983216

**Grooving unit NT701 230V** (1 x 3.8 kW, 200 Hz, 12000 rpm)**incl. 2 NC servo-axes**with motorized adjustment for entire machine, as well as motorized height adjustment for **vertical and horizontal grooving**.

Pivot range 0 - 90°

Machining in forward direction only

With plunge control

Max. tool dia. 160 mm

incl. 9.0 mm grooving tools

Grooving widths 3, 4 and 9 mm (other grooving widths on request only)

The machine is electrically locked against front grooving work with edge thickness greater than 3 mm

SPRAYER UNIT

5056779



Sprayer unit TR701 for the in- and outfeed area

for the infeed area: electronically controlled release agent sprayer

for the outfeed area: electronically controlled cleaning agent sprayer

5056776



Spraying unit AM701 after pressure unit with use of antistatic coolant

5056778



Sprayer unit GM701 after pressure unit to sprinkle the edge with lubricant recommended for the use of glossy edges

PACKAGING

5050462*

Packaging standard

Machine on pallet or wooden frame, wrapped in foil

WARRANTY

The **warranty period** for the machine is **12 months** for one-shift operation.

Glu Jet - 3-year warranty

On all mechanical and electrical parts.

Excluded are damages to the system due to improper operation and/or due to insufficient cleaning and maintenance. The extended warranty is limited to single shift work or a maximum workload of 200.000 meters.

Total price for you

\$ 265,900.00

Terms of delivery of HOLZ-HER

HOLZ-HER TERMS AND CONDITIONS

1. Acceptance. Except as otherwise provided on the agreement signed by the customer and HOLZ-HER, this sale by HOLZ-HER, ("HOLZ-HER") is governed by these terms and conditions of sale only. All terms to the contrary and all additional terms and conditions of purchase or sale stated in Buyer's purchase order, or any other commercial documents prepared by Buyer have been and are hereby rejected.
2. Minimum Billing/Handling Charge. \$35.00 is the minimum charge on all parts orders. Orders under \$100.00 will have a \$5.00 handling charge added.
3. Price. Unless otherwise agreed, prices are F.O.B. HOLZ-HER Warehouse (UCC Terms). Charlotte, N.C. Prices do not include installation, training or set-ups.
4. Taxes. Prices do not include sales, use, excise, privilege, or any similar tax levied by any government body, and any such taxes shall be paid by Buyer. Buyer shall upon request provide HOLZ-HER an applicable tax exemption certificate.
5. Cancellation/Changes. Orders accepted by HOLZ-HER are not cancellable without the written consent of HOLZ-HER. Down payments are not refundable and, in the absence of an agreement to the contrary, upon Buyer's cancellation will be retained by HOLZ-HER as liquidated damages in lieu of other remedies. Mathematical or clerical errors may be corrected by either party.
6. Delivery. Unless otherwise agreed, all deliveries are F.O.B. HOLZ-HER' warehouse (UCC Terms). Delivery and Installation schedules represent estimates only and are subject to timely receipt of all necessary instructions, licenses, letters of credit, deposits, etc. Partial deliveries are permissible. Related software may be delivered separately. HOLZ-HER will not be liable for any delay, or for any damages suffered by reason of delay. Delivery is subject to Buyer maintaining credit satisfactory to HOLZ-HER. HOLZ-HER may suspend performance or delivery at any time pending receipt of assurances, adequate to HOLZ-HER in its discretion of Buyer's ability to pay, including full or partial prepayment. Failure to provide such assurances shall entitle HOLZ-HER to cancel this contract without further liability or obligation to Buyer.
7. Payment. Unless otherwise agreed, all parts purchases are C.O.D. For machines, 30% of the purchase price shall be paid upon execution of the quotation or purchase order. An additional 60% shall be paid by the Buyer just prior to shipment of the product from HOLZ-HER or U.S. Customs. The remaining 10% shall be paid upon completion of installation or within 30 days of delivery, whichever occurs first, without delay. Completion of installation occurs on the earlier of the customer beginning to use the machine or signing the delivery and acceptance certificate. Invoices not paid within thirty (30) days after their due date will accrue interest at the rate of one-and-one-half percent (1½%) per month until paid in full. Buyer shall pay all costs of collection, including reasonable attorney's fees, of any overdue amount owed. Buyer may not hold back, delay, or set-off any amounts owed to HOLZ-HER in satisfaction of any claims asserted by Buyer against HOLZ-HER.
8. Product Leases. Product leases may be arranged between Buyer and an Equipment Lessor. In such event, these terms and conditions govern the relationship between HOLZ-HER and such Lessor as well as HOLZ-HER and Buyer. If Buyer does not sign a delivery and acceptance certificate within 10 days of the commencement of installation (meaning that the Product and an authorized technician has arrived at Buyer's premises), then Buyer and such Lessor shall be deemed to have rejected the Product and HOLZ-HER shall have the right to disable and/or remove and repossess the Product from Buyer's premises.
9. Risk of Loss. All risk of loss to Products sold shall pass to the Buyer upon delivery by the Company of such Products to a common carrier.
10. Limited Warranty. HOLZ-HER does not warrant Software Products, any warranty from Software Products comes directly from the software developer. Other than Software Products, HOLZ-HER warrants that the Products sold to Buyer will be free from defects in materials and workmanship for one year after the date of delivery to Buyer, normal wear and tear excepted. This means that the Product was manufactured in accordance with HOLZ-HER standard practices and is subject to normal manufacturing tolerances. In addition, except as otherwise provided herein, HOLZ-HER warrants that for a period of one year, the Product will perform in accordance with the Product Specifications published by HOLZ-HER for the particular version of the Product purchased by the purchaser. In satisfaction of this warranty, HOLZ-HER will repair or in its sole discretion replace any Product or part thereof found to be defective during such period as follows: For a period of one year after the installation of the Product, HOLZ-HER will provide free replacement parts for any part found to be defective. In addition, for a period of 6 months after installation, if HOLZ-HER installed the Product, HOLZ-HER will also provide, free of charge, the labor necessary to install such part or effect such repair. If HOLZ-HER did not install the Product, then all repair work must be arranged on standard terms. If in HOLZ-HER's judgment the Product cannot be repaired or replaced, the Product shall be returned to HOLZ-HER and HOLZ-HER shall refund the purchase price (exclusive of freight, installation, and financing charges). Dealers and salesman are not authorized to offer warranties greater than or in addition to those described above. Descriptions, representations, and other information in advertisements or other promotional materials or statements or representations made by sales agents or representatives shall not be binding upon HOLZ-HER and shall not be part of this limited warranty unless expressly identified in writing as Product Specifications.

This limited warranty does not cover normal maintenance, or items consumed during normal operation, nor normal wear and tear, use under circumstances exceeding specifications, abuse, unauthorized repair or alteration, moving of the Product, lack of proper maintenance or damage caused by natural causes such as fire, storm, or flood. Tooling is considered to be a normal maintenance item and is not covered by this warranty. This limited warranty is Buyer's exclusive remedy. It shall not be deemed to have failed of its essential purpose so long as HOLZ-HER is willing and able to repair, replace, or accept return and refund of defective Products in the manner specified. This limited warranty terminates if Buyer defaults on making payments for the Product covered. Proper use of the Product will require customer supplied electricity, dry air supply, dust collection, foundation, etc. in conformance with HOLZ-HER specifications. Use of electricity, air supply, dust collection, foundation or other customer supplied items outside of HOLZ-HER specifications will void this warranty.

THE FOREGOING WARRANTY IS THE ONLY WARRANTY HOLZ-HER MAKES AND IS IN LIEU OF ALL OTHER WARRANTIES. HOLZ-HER EXCLUDES AND DOES NOT MAKE WARRANTIES OF MERCHANTABILITY, FITNESS FOR A PARTICULAR PURPOSE OR ANY OTHER WARRANTY WHATSOEVER, WHETHER EXPRESSED OR IMPLIED. NO WARRANTIES SHALL ARISE FROM A COURSE OF DEALING OR USAGE OF THE TRADE.

11. Limitation of Liability. Any action by Buyer under or relating to this Agreement or the Products sold must be commenced within one (1) year after such cause of action has accrued. IN NO EVENT SHALL HOLZ-HER BE LIABLE FOR ANY INDIRECT, SPECIAL, PUNITIVE OR CONSEQUENTIAL DAMAGES, INCLUDING BUT NOT LIMITED TO LOST PRODUCTION OR LOST PROFITS AS A RESULT OF THE SALE OR SERVICE OF THE PRODUCT OR OTHERWISE. HOLZ-HER'S LIABILITY SHALL IN NO EVENT EXCEED THE AMOUNT PAID BY THE BUYER FOR THE PRODUCT.
12. Claims. Within ten (10) business days after completion of installation of Products sold, Buyer must give written notice to HOLZ-HER of any claim by it based upon the condition, quantity, or grade of the Products sold or of any claimed nonconformity with Buyer's specifications, which notice must indicate the basis of Buyer's claim in detail. The failure of Buyer to comply with this paragraph shall constitute irrevocable acceptance by Buyer of the Products delivered and shall bind Buyer to pay HOLZ-HER the full price of such Products.
13. Safety Devices. In operating or using the Products, Buyer shall follow all procedures and warnings, if any, recommended by HOLZ-HER at any time before or after sale. Buyer shall ensure that all persons authorized to use the Products have been adequately trained. Buyer shall not remove any warning labels or safety devices, and shall immediately cease use of the machine in the event a safety device becomes damaged or removed. Should Buyer fail to do any of the above, or if Buyer shall fail to maintain the products in accordance with HOLZ-HER' recommendations, Buyer will indemnify and hold HOLZ-HER harmless from any risk, liability, or obligation to persons injured directly or indirectly as a proximate result of such failure.
14. Security Agreement. Buyer hereby grants to HOLZ-HER a continuing purchase money security interest in all Products sold and/or delivered to Buyer and to the proceeds thereof. Buyer shall execute and deliver any financing statements and other documents that HOLZ-HER may reasonably require for the perfection of such security interest and Buyer hereby authorizes HOLZ-HER to do all other acts reasonably necessary for the establishment, perfection, preservation, and enforcement of its security interest. Buyer shall maintain adequate insurance while security interest is in effect.
15. Arbitration. All disputes and controversies that arise between the parties shall be referred to binding arbitration to be held in Charlotte, North Carolina in accordance with the then current Rules of Commercial Arbitration of the American Arbitration Association. Unless otherwise agreed to by the parties in writing, the dispute shall be heard and decided by a panel of three (3) neutral arbitrators. The award of the majority shall govern. Each party shall have the right by giving written notice to the other party to refer the dispute to arbitration at any time without recourse to common or commercial courts. The parties also agree that the AAA Optional Rules for Emergency Measures of Protection shall apply to the proceedings. The award rendered by the panel may be judicially enforced by any court of competent jurisdiction. In reaching a decision, the arbitrator(s) shall decide in accordance with the terms of the Agreement between the parties and shall have no authority to change, modify, add to or subtract from any provision of the Agreement between the Parties. If the answer to the dispute is not found within the terms of the Agreement, the arbitrator(s) shall apply the laws of the state of North Carolina to resolve the dispute. Notwithstanding the laws of North Carolina, the arbitrator(s) shall in no event award punitive, treble or exemplary damages.
16. Entire Agreement. Buyer and HOLZ-HER acknowledge that these Terms and Conditions of Sale, together with HOLZ-HER' invoice, constitute the entire agreement between the Buyer and HOLZ-HER with regard to the sale or transfer or the Products sold supersede all prior oral or written statements of any kind made



by the parties or their representatives. These Terms and Conditions of Sale may not be amended, modified, or supplemented except by written agreement executed by the Buyer and HOLZ-HER. The provisions of this agreement are hereby deemed by the parties to be severable.

Annex

Information for the start-up of HOLZ-HER machines by our technicians, if this was agreed in the contract:
Some points to ensure that a technician will be able to quickly and smoothly install your HolzHer machine and stage a demonstration.

Prior to asking for a technician for the start-up, please observe the following items:

1. Check the items covered by the contract by the means of the acknowledgment of order or invoice for the completeness of the equipment and the accessories as well as for damages and faults.
2. Check whether potentially necessary foundations were prepared according to our plan.
3. Unload the machine, unpack it and remove the wooden substructure.
4. Place the machine on the spacers supplied with it and remove conservation materials.
5. Have the machine connected to electricity supply, pneumatic and suction system; please take care that sufficient electricity supply is available.
6. We naturally need sufficient time for planning and the start up of your machine. Please let us know in time the date you require an engineer.

Detailed description of machine control

Edge Control PPC 322 W

21.5" touch screen with 16:9 format.

Network compatible.

LED display for equipment selection.

Program list with program names and numbers.

External USB port.

Individual selection of units with functions as basic setting options for desired values, path points and tool corrections as well as fixed path points.

Central and clear fine adjustment for unit set-up processes and axis settings (depending on equipment).

Interval display for minimum interval between workpieces.

Integrated path control - general or program-specific control of path points.

Clear and complete acquisition of all operating data.

Service reports in clear text.

Diagnostic system.

Integrated synchronous bus system for maximum unit control accuracy.

Individual user management for up to ten users, with password protection.

Barcode interface (optional).