

stefani kd

single-sided automatic edge banders for the furniture industry



STEFANI KD/FRT

QUOTE #: 000000 DATE: 00/00/2018

*Photo may include optional equipment

COMPANY NAME

CONTACT NAME:

ADDRESS:

PHONE #: (000) 000-0000

EMAIL:



ABOUT SCM

SCM is an industry leader for the production of industrial woodworking machinery, as well as for machinery that processes advanced materials, with brands specializing in specific technologies, present across 5 continents for over 65 years.

65 years of history

3 main production sites in Italy

20 foreign branches

300,000 square meters of production space

17,000 machines manufactured per year

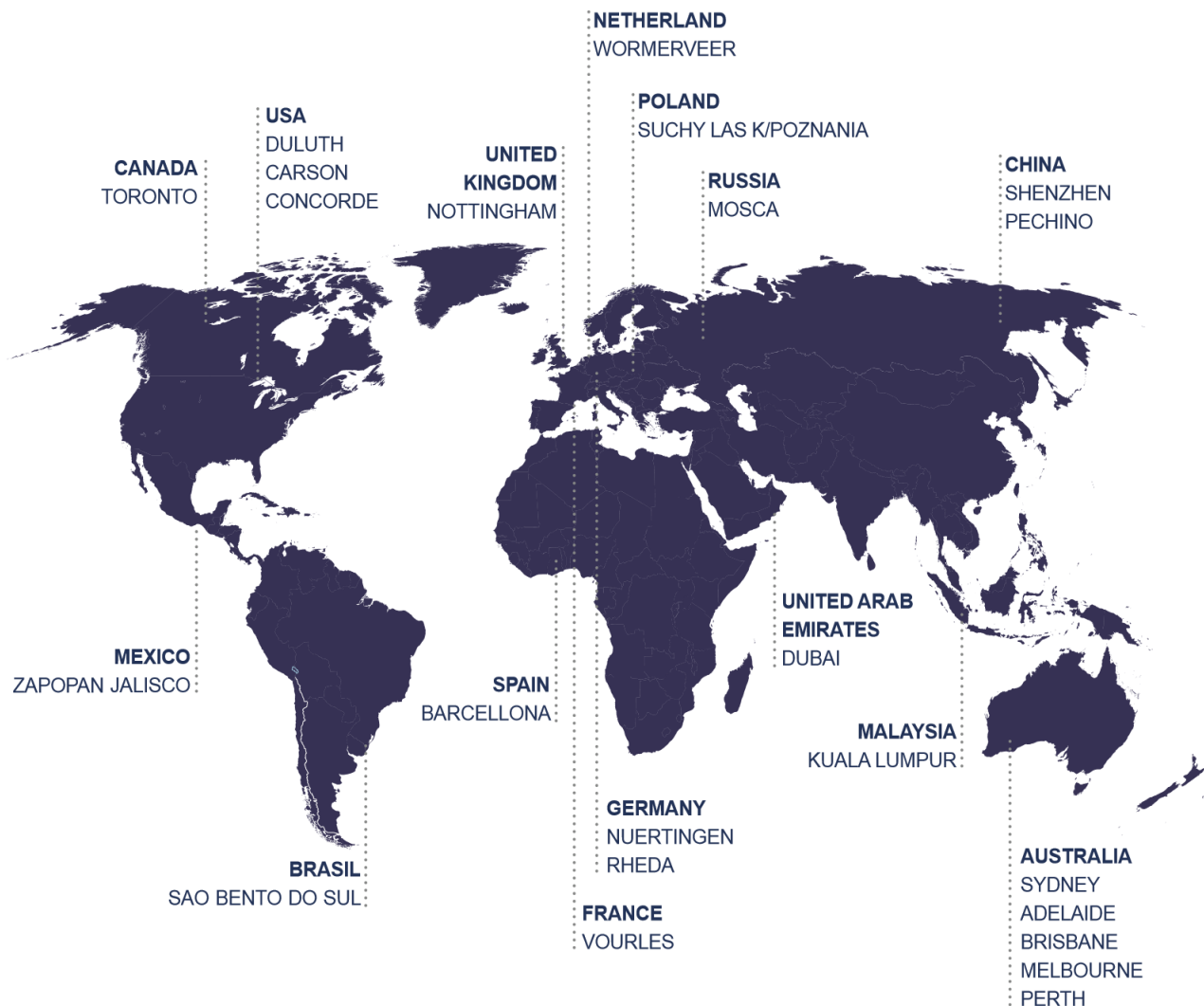
90% export

350 agents and dealers

500 support technicians

500 registered patents

THE MOST IMPRESSIVE DISTRIBUTION NETWORK IN THE WORLD



Dear **Customer**,

Thank you for your consideration in working with SCM. Attached is our proposal for the Stefani KDR. If SCM has inadvertently omitted any portion or feature requested by the customer upon agreement, please contact SCM sales personnel for further clarification about this price quotation.

We appreciate your business and we look forward to hearing from you soon.

Sincerely,

Tim Sermonet
Product Manager
Phone: 770-622-6608
Mobile: 404-759-3504
E-Mail: tsermonet@scmgroup.com

Equipment Finance:
Kevin Mellon
SCM North America Equipment Finance
Mobile: 404-759-3575
Fax: 770-813-8263
E-mail: kmellon@scmgroup.com

For all other general inquiries, please feel free to contact our offices below:

SCM North America
2475 Satellite Blvd.
Duluth, GA 30096-5808
Phone: 770-813-8818
Fax: 770-813-7880

SCM West Coast
933 Sandhill Ave
Carson, CA 90746
Phone: 770-813-8818



Stefani KD/FRT – Single Sided Automatic Edgebander

Automatic single sided edgebander designed to be used for edgebanding straight vertical profiles with coiled material (veneer and PVC) and with strips (high-pressure laminate and solid wood) with a maximum thickness of 12mm.

Machine Base

The machine base is a rigid, ribbed steel structure and is designed to provide maximum support for the working units. The ribs provide stability and, at the same time, provide openings in the base to facilitate removal of the chips/dust.

Capacities And Speed

- Edgebanding thickness: .4mm - 12mm (.016-1/2")
- Guillotine capacity: 3mm
- Feed speed: 33-60 ft/min.
- Panel height: 3/8" min – 2 3/8" max
- Minimum panel length: 5 1/2"
- Minimum panel width: 2"
- Minimum distance between panels: 24"

PC 21" Controller

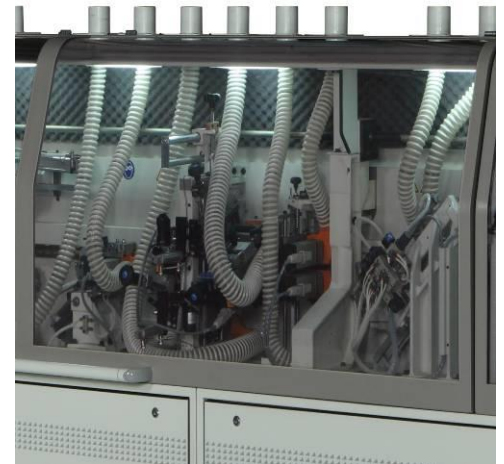
The Solution MD comes equipped with the Maestro Pro Edge controller, a 21" industrial multi touch screen. Comes standard with a Windows operating system. Capable of storing an unlimited number of programs. Monitors statistical data, as well perform diagnostic functions and program functions. 1920 x1080 resolution, intuitive interface. Monitors the number of panels processed, the amount of material applied, the number of hours run, the distance the feed track has turned, etc. Maintenance schedules are monitored for various stations throughout the machine. Swivels 270 degrees for easy access..

The Stefani KD comes equipped with the new "Startouch" controller. This controller features a 12" touch screen display. Capable of storing 100 programs, 6 at the touch of a single key. Color graphic display of all the working units. Tracks production information, diagnostic information and monitors maintenance schedules. Choose mm's or inches, as well as 5 different languages. Swivels 270 degrees and tilts for easy access.



Lighted Sound Enclosure With Acoustical Hoods

Machine comes standard with a lighted sound enclosure making it easier for the operator to perform his daily functions. It is also equipped with an acoustical sound enclosure that covers the entire machine and reduces the noise level.



Electronic Positioning Of The Top Pressure Beam

All operating units raise and lower simultaneously when the pressure beam is adjusted. No adjustment is required for the glue roller when changing panel thickness. The pressure beam has two rows of staggered pressure rollers with steel bearings. The height of the pressure beam is electronically programmable through the controller.

Anti-Adhesive

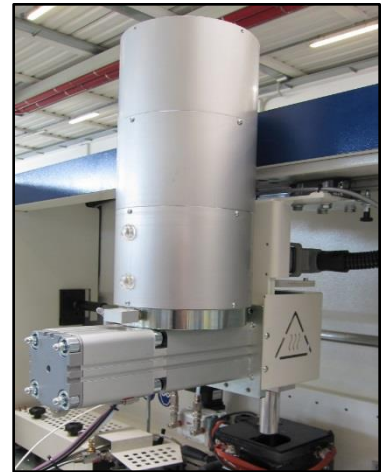
The machine comes equipped with an anti-adhesive unit positioned prior to the pre milling unit. It prevents the buildup of glue on the top and bottom of the panel. The unit comes with two independent nozzles and a tank of anti-adhesive liquid.



“QMS” Glue Station

Automatically supplies the glue pot with the proper amount of glue on demand. The level of the glue in the glue pot is monitored by a sensor insuring the proper level. The pot is smaller, the glue is turned over faster as a result. The hopper holds in excess of 10 lbs. of glue and has sight glass to see what the level is. Teflon coated glue pot to facilitate glue changeover. Warm up time is approximately eight to ten minutes.

An additional quick disconnect glue pot is included with the machine.



SGP Glue Pot with CNC Control of the Glue

Quick heat up time due to the small glue pot. Reverse rotation of the glue roller for the application of solid wood. Double Thermo Regulation for easy use of both EVA and PUR glue. Color change and glue pot cleaning are able to be completed in minutes, as opposed to hours. CNC control of the amount of glue being applied, specific to the program, is standard. Through the controller the operator can change the amount of glue being applied depending on the substrate of the panel. The purging process is CNC controlled as well when changing glue colors or going from EVA to PUR glue.



Servo Driven Pressure Section

There are a total of four pressure rollers for pressing the banding to the workpiece edge. The first roller is powered and applies pressure pneumatically. It is also Teflon coated to prevent the banding material from slipping. The three idle rollers have opposing one-degree tilt to provide extra pressure along the top and bottom edge. The unit comes standard with a servo driven motor for positioning. This eliminates the need for the operator to manually adjust the unit and helps reduce changeover time. The pressure section is also equipped with pneumatic jumping so the unit activates exactly on the leading/trailing edges. Standard is the edge detecting sensor that will shut down the feedtrack when there is no material present to be applied. Equipped with I-Glue, locks the glue roller in place at the end of the panel eliminating any excess glue.



Infeed Fence

The infeed fence has a mechanical digital indicator to position the fence and determine the stock removal. It is also equipped with a pneumatic panel spacing device to prevent the operator from feeding the panels to close to one another.



Air Cushion Table at Machine Entry

Air cushion table located at machine infeed to help facilitate the loading of panels, especially panels of large dimensions. It includes the extension of the machine entry infeed fence. It is not possible to have the narrow feed option on the machine. Table dimensions are 1,600mm x 600mm.



“RT-E” Pre-Milling Station:

To rectify/clean panels already sized and squared before the edge is applied. The unit is composed of two high frequency motors with jumping action controlled through the PLC. The cutting heads are adjustable vertically. The unit is equipped with copying devices which guarantee that material removal is consistent on long or slightly out-of-square panels. 64mm tall diamond premill cutters with replaceable inserts come standard.



“K-SEL 2” End Trimming Station

This unit is composed of two independent .50 hp motors mounted on THK guides. End trim utilizes a draw cut system for reduced blade projection on thick panels. The unit comes standard with automatic tilting of the unit from the control panel with two preset positions. When operating in conjunction with the corner rounding station the unit is equipped with two position pneumatics to leave the material long, thus allowing the corner rounding unit to have a seamless finish.



Flush Trimming Station:

Two independent 1.0 hp motors operating at 12,000 rpm. The unit comes standard with two position pneumatics and is capable of cutting flush or leaving an overhang. Equipped with vertical copy shoes with digital indicators. Motors have quick release plugs to facilitate tooling changes. Pneumatic in/out positioning is standard.



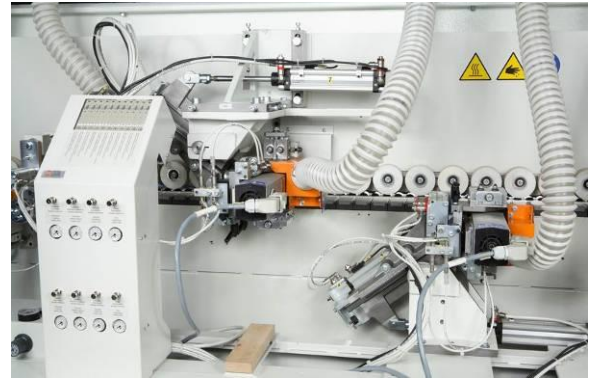
Edge Trimming Station Servo Driven:

The top and bottom trim station has two independent 1.0 hp motors operating at 12,000 rpm. Large diameter vertical and horizontal copying devices with precise digital indicators. The unit is equipped with a servo driven motor to go from one material thickness to another through the controller. Top trim unit three roller nesting kit comes standard, beneficial when running panels with grooves and/or 35mm hinge holes.



“ROUND-K” Corner Rounding Unit:

Two independent .80hp motors that slide on THK guides ensuring the highest quality finish. Unit is designed to work as an additional set of trimmers for rounding the top/bottom as well as the front/rear corners of work piece with 3mm PVC edges. The unit is equipped with front and lateral copying devices and pneumatic blowers to clean the panel. Dust shrouds surround the cutter and travel with the unit as it trims. The unit can go from thin tape to 3mm PVC, through the controller, with no manual adjustments by the operator.



“RAS/1000” Profile Scraping Station

The profile scraping station designed to remove knife marks from thick PVC. The unit is equipped with pneumatic in/out positioning through the controller. It has a large diameter horizontal copy wheel and side copy wheel device with digital indicators. It features a quick knife replacement system and comes with 3mm knives. The unit is also equipped with dust extraction. Top scrape unit three roller nesting kit comes standard, beneficial when running panels with grooves and/or 35mm hinge holes.



“RC-V” Glue Scraping Station

The glue scraping unit is for the finishing of thin PVC. It is equipped with two throwaway knives, vertical rotating copiers and blowers for tool cleaning. The unit is equipped with on/off pneumatic exclusion.



“SPN” Buffing Unit And Hot Air Blower

The buffing unit has two .25 hp motors. The unit cleans and polishes the panel edge. The unit oscillates to utilize the full width of the wheel and prevent rounding of the panel's leading edge.

The hot air blower is designed to brighten the edges of thick PVC that can sometimes discolor during the machining process. The unit consists of a single hot air blower with adjustable heat range and a directional heat shield for coverage from the top to the bottom edge.



Acoustical Safety Enclosure

All working units are enclosed under an acoustical safety hood that is insulated to help reduce noise and prevent accidents. The hood has a safety microswitch which prevents the machine from operating when the hood is open. The machine has a decibel rating of 86db when operating.

Dust Extraction

Working units are individually ported on the top of the safety enclosure for maximum efficiency, per the drawing.

Technical Specifications

Glue Pot Unit:	
Heating Time	Approx. 8-10 min.
Glue Capacity	3.3 lbs.
Pre-milling Station:	
Horsepower	3.0 HP ea.
RPM	12,000 RPM
Max. Stock Removal	60mm ²
Diameter/Bore/Height	100mm/30mm/64mm
End Cutting Trimming Station:	
Horsepower	.50 HP ea.
RPM	12,000 RPM
Tilting	0-15 degrees
Blade Diameter/Bore	100mm/32mm
Flush Edge Trimming Unit:	
Horsepower	1.0 HP ea.
RPM	12,000 RPM
Cutting Tools	70x20x16mm
Tiltable Edge Trimming Unit:	
Horsepower	1.0 HP ea.
RPM	12,000 RPM
Tilting	0-15 degrees
Cutting Tools	70x20x16mm
	3mm radius knives
Corner Rounding Unit::	
Horsepower	.80 HP ea.
RPM	12,000 RPM
Cutting Tools	3mm inserts
Scraping Unit:	
Knife Radius	2mm and 3mm inserts
Buffing Unit::	
Horsepower	.25 HP
RPM	3,000 RPM
Diameter/Bore	152mm/17mm
Feed Motor Horsepower	2.5 HP
Feed Speed	33-60 FPM
Frequency Converter	200 Hz
Pneumatic Operating Pressure	90 PSI
Machine weight:	7,603lbs.
Electrical:	89 amps @ 230v three phase
Dust:	3,500 cfm
Dimensions (LxWxH):	239" x 65" x 62"

PRICE

Machine Price:

\$

Delivery:

FOB Duluth, GA or Carson, CA

Installation:

Not Included

Terms of Payment:

Terms of payment offered, or any terms agreed upon, are subject to credit approval. This offer is subject to SCM NORTH AMERICA General Terms and Conditions of Sale. Offer is subject to prior sale of the equipment. Quote expires in 30 days. Price quoted is for the machine as described above and is subject to change if the specifications for the machine are changed at the request of the buyer.

Shipment:

Shipment is subject to delay should changes be made to meet the requirements of purchaser from manufacturer's design specifications stated herein.

Tooling:

Tooling is not included. Upon request, we can supply a quotation on the most suitable tools required for use on this machine.

Installation, Training, Service Rates and Conditions:

Installation, when purchased, will be performed by an SCM factory trained service technician or Certified Dealer Technician. Installation is to be understood as the assembly of the machine to the 'ready-to-run' state; it does not include floor, masonry work, the running of electrical, pneumatic or dust extraction services to the site. Training will be conducted on site by the service technician after installation has been completed.

SCM is committed to maximizing your production time. Your machine may be preselected to contain automatic maintenance reminders. You can contact SCM North America Service Department at 866-216-2166 if and when you receive a maintenance message.

Product Registration:

Upon arrival of your machine, locate the red label with instructions on how to register your machine.



ATTENTION: MACHINE REGISTRATION REQUIRED

REGISTER YOUR MACHINE IN JUST A FEW SIMPLE STEPS

Mobile

Scan the QR code below
Fill out required fields
Receive email confirmation

Web instructions

Visit scmgroupusa.com
Go to the Service tab and click
Product-Event Registration tab
- Fill out required fields
- Receive email confirmation

Register today and receive

- Accurate machine timing while in time of purchase
- DPA's on essential warranty options
- Quicker and more efficient service and support
- Exclusive discounts and special offers

SCM North America | scm@scmgroupusa.com | 216.216.2166 | 866.216.2166

Warranty:

SCM warrants that the machinery will be free of defects in workmanship and materials for a period of one (1) year beginning on the date the machinery is accepted by the customer. This warranty includes belts, bearings, and common electrical parts, which carry a six-month warranty. This warranty does not include parts consumed during normal operation (wearable items) or maintenance required in the ordinary course of operation.



EA ERC Series of Return Conveyors

SCM is pleased to provide a standard ERC Series Conveyor to be paired with a **machine model**. The edgebander, coupled with an ERC, streamlines workflow and creates a very productive work center for banding parts with a single operator.

The result is labor savings, machine efficiency, less handling damage and less rejects. The machine has independent adjustable speed control on the receiving table, transfer belts, and return conveyor, allowing the operator to balance all three for a customized perfectly balanced system.

Workpiece Requirements:

Length:*	300 - 2,500 mm	12" - 98"
Width:	55 - 1,625 mm	2 1/4" - 64"
Thickness:	10 - 60 mm	3/8" - 2 3/8"
Weight:	part length ≤ 700 mm:	30 kg
	part length > 700 mm:	45 kg
		66 lbs.
		100 lbs.

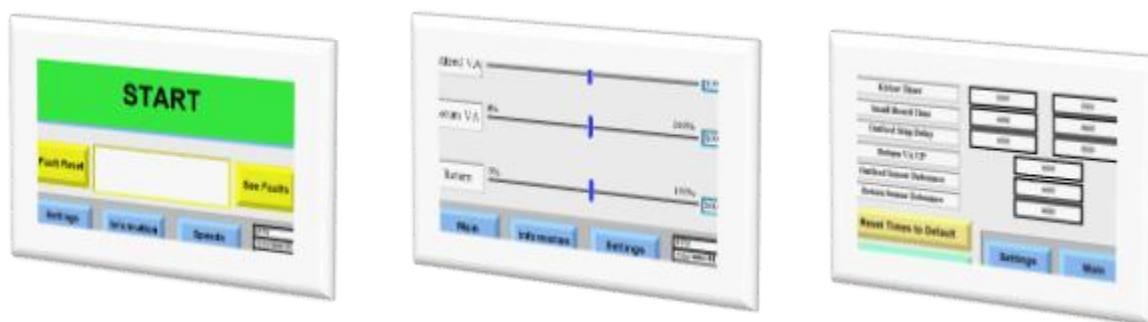
*Length is defined as the side of the panel where the edgebanding is being applied

Four Sided Edgebanding Specifications with Return Conveyor:

Panel Dimensions:	Min	300 x 300 mm	12" x 12"
	Max	1,320 x 1,320 mm	52" x 52"

Panel Spacing Specifications:

Machine Feed Speed		Min. Distance between Panels	
12 m/min	40 ft/min	600 mm	24"
18 m/min	60 ft/min	700 mm	28"



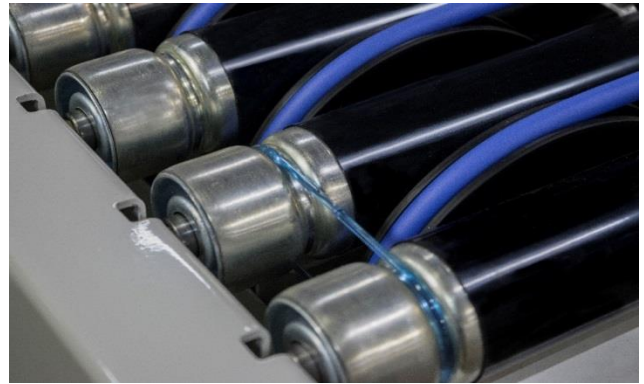
7" Touchscreen Controller

Every ERC conveyor comes standard with a 7" color touchscreen controller. The operator is able to customize the feed speeds per the size of the panels being ran. The operator has individual speed control of the receiving table speed, the transfer table speed and the return table speed. The controller is located at the outfeed end of the machine on the top of the electrical panel, with manual controls for the emergency stop and on/off switches located at the infeed end of the conveyor.



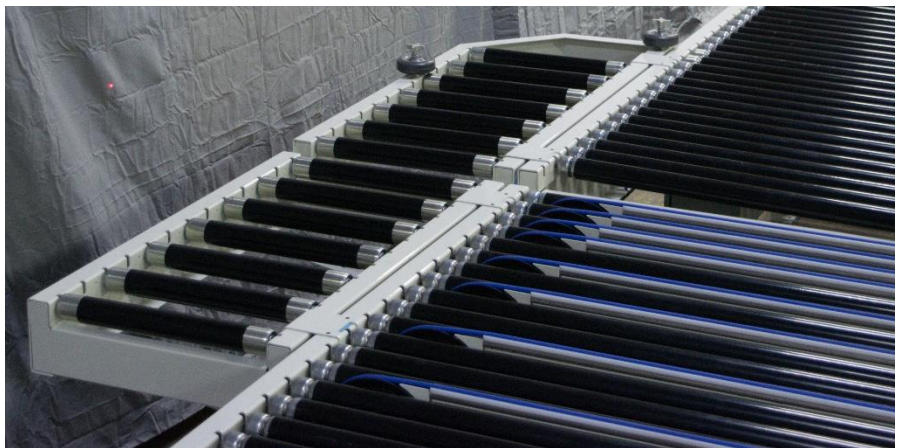
Steel Rollers

The conveyor comes standard with steel rollers with a non-marring urethane coating, as well as steel ball bearings. This is a more expensive option that replaces the use of pvc rollers that can warp over time.



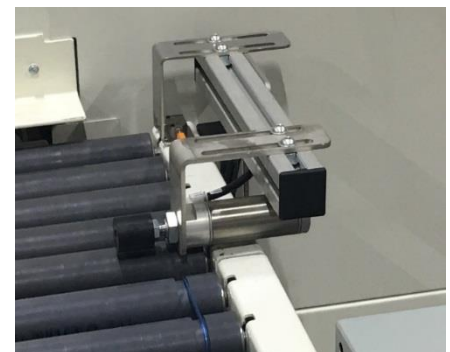
Panel Rotating Device

The unit comes standard with the Panel Rotating device. This allows the operator to process the short sides of long and narrow panels. The panels get rotated a full 90 degrees as part of the transfer process between the receiving/transfer table and the return rollers. This prevents the panel from hanging over the rollers and possibly getting damaged.



Panel Kicker Device

The unit comes standard with the Panel Kicker device. This helps with the feeding and flow of smaller parts that are less than 6" wide that potentially can get hung up on the receiving table. allows the operator to process the short sides of long and narrow panels. The panels get rotated a full 90 degrees as part of the transfer process between the receiving/transfer table and the return rollers. This prevents the panel from hanging over the rollers and possibly getting damaged.



The ERC Series 900/1,600/**machine length** is specifically designed to work with the **machine model** edgebander outlined in this proposal. Other return conveyors, in differing lengths and widths, specific to your application are available upon request.

The Return Conveyor will be configured as follows:

- Motorized **Machine Mate** transfer roller section for connection to edgebander
- 900mm wide x 1,600mm long receiving conveyor with 48mm Ø Steel rollers on 65mm centers.
 - Receiving table consists of two vertically actuated roller sections
 - Belt transfer unit features 9 transfer belts
- 900mm wide x LENGTH return conveyor with 48mm Ø Steel rollers on 65mm centers
 - Last rollers can be made idle by removing the drive belts
- Transfer by-pass switch
- Separate speed control for Receiving Table, Belt Transfer and Return
- Conveyor sequence controlled by mini-PLC
- Manual Controls to include:
 - Start. Stop
 - 3 x Speed Pot
 - Transfer mode
 - By pass
- SCM White Color RAL9002
- Voltage: 480 / 3 / 60, 5 amps (240 / 3 / 60, 10 amps)
- Compressed air requirement: 10 cfm @ 90 psi

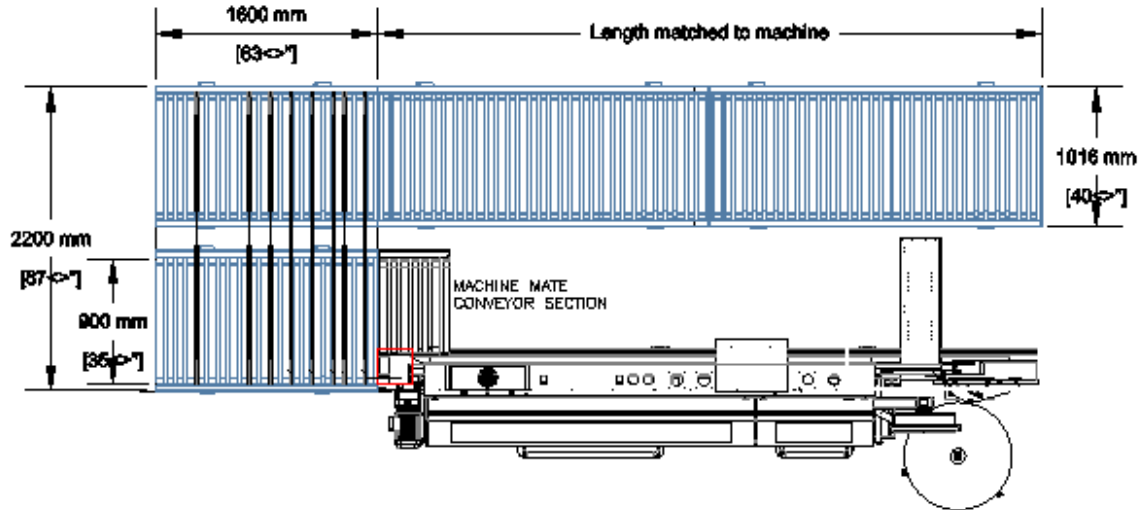
Available in Different Lengths and Widths

Stock Units with both 3' and 4' Wide Rollers

Receiving Table Available in 62" and 96" Lengths

**EDGE AUTOMATION:
ERC SERIES STANDARD CONVEYOR
900|1600|CONVEYOR LENGTH**

CONVEYOR ROLLER WIDTH: 900MM
RECEIVING TABLE LENGTH: 1600
POWER REQUIREMENT: 480V 3 60HZ



PRICE

Machine Price:

\$ 00,000.00

Delivery:

FOB London, Ontario

Installation:

Not Included

Product Registration:

Upon arrival of your machine, locate the red label with instructions on how to register your machine.

Warranty:

SCM warrants that the machinery will be free of defects in workmanship and materials for a period of one (1) year beginning on the date the machinery is accepted by the customer. This warranty includes belts, bearings, and common electrical parts, which carry a six-month warranty. This warranty does not include parts consumed during normal operation (wearable items) or maintenance required in the ordinary course of operation.

SERVICE & SPARE PARTS

A CONTINUOUS COMMITMENT TO PROTECT YOUR INVESTMENT

Visit our website at www.scmgroupspareparts.com

SERVICE

Email us at service@scmgroup.com

SCM provides a service that goes beyond the purchase, to guarantee the long term performance of your technological production system and peace of mind for your business.

A COMPLETE RANGE OF AFTER-SALES SERVICES

- Installation and start-up of machines, cells, lines and systems
- Tailored training programs
- Telephone support to reduce times and costs when machines are experiencing down time
- Preventive maintenance programs to guarantee long term performance
- Complete renovation of machines and plants to renew the added value of your investments
- Custom upgrading to update machines and plants to meet new production requirements

SPARE PARTS

Email us at spareparts@scmgroup.com

Parts Pronto – your one-stop shop for all spare parts and service needs www.scmgroupspareparts.com

SCM has 140 spare parts professionals worldwide to meet any request with real-time shipments.



Our spare parts inventory, with a value of 15 million dollars, covers every single machine.



Spare parts guaranteed: we guarantee also hard to find parts, with 3.5 million euros invested in “critical” spare parts.



Immediate availability: over 90% of orders received are carried out the same day thanks to the huge inventory available.



6 branches around the world: The spare parts service can count on worldwide support (Rimini, Singapore, Shenzhen, Moscow, Atlanta, Sao Bento do Sul).



500 shipments a day





Equipment Finance Application

Company Name: _____ Email Address: _____

Address: _____ City: _____ State: _____ Zip: _____

Phone: _____ Fax: _____ Years in Business: _____

Address of Equipment location: _____

Company Website: _____ Tax Exempt Yes No Fed ID #: _____

Check One: Corp. LLC Partnership Sole Prop. State of Incorpor: _____

Bank: Include copy of first page of Company's most recent 3 months bank statements

Vendor Name: _____ Contact: _____ Equipment Cost: _____

Equipment Description (attach sales order if available): _____

Please complete the following information, and signature, of each officer:

1) Owner's Name: _____ Title: _____

Social Security Number: _____ % Owner: _____

Address: _____ City: _____ State: _____ Zip: _____

2) Owner's Name: _____ Title: _____

Social Security Number: _____ % Owner: _____

Address: _____ City: _____ State: _____ Zip: _____

3) Owner's Name: _____ Title: _____

Social Security Number: _____ % Owner: _____

Address: _____ City: _____ State: _____ Zip: _____

I hereby certify that the information contained in the lease application is true and accurate and I hereby authorize our banks, trade references and financial institutions the right to release credit information. In states where permissible, I hereby authorize the filing and recording of UCC financing statements showing the Secured Party's interest in the equipment and grant the Secured Party's right to execute lessee's/debtors name thereto. A photocopy of this authorization shall be as valid as the original.

Signature: _____ Title: _____ Date: _____

Please fill out the information and submit to:

SCM Equipment Finance
2475 Satellite Blvd
Duluth, GA 30096

Phone: 800.292.1837
Fax: 770.813.8263
financing@scmgroup.com

Kevin Mellon
kmellon@scmgroup.com
404.759.3575

Blair Hundley
bhundley@scmgroup.com
770.238.8500