



PRATIX S12 CR
4' x 8' CNC Router
(R102202)



Photo may include optional equipment

QUOTE:

DATE:

PRESENTED TO:

**CONTACT
PHONE**



About SCM GROUP

Founded in 1952 in Rimini, Italy, SCM Group S.p.A is the leading designer, manufacturer and distributor of innovative and technologically advanced solutions for woodworking, glass, stone, plastic, metals and composite materials. SCM Group's line of products range from the "Classic" entry-level manual equipment to the turnkey fully-automated "Industrial" solution, and all products use the best Italian components possessing the renowned "Made in Italy" high level of quality and control. With headquarters in Rimini, SCM Group operates through 18 production facilities located throughout Italy and 19 foreign subsidiaries with a total workforce of 3.100 employees. Using an extensive distribution network, SCM Group exports over 80% of its production, covering 120 countries through subsidiaries, distributors and agents.



Pratix S12 CR – 4'x8' CNC Router

(00.20.51) Base Design and Construction

The SCM Pratix S12 owes its rigidity to the design and weight of its reinforced base and innovative one-piece frame. All portions of the base are of heavy gauge steel and are normalized after welding, a process which ensures that all stress in the base is removed before it is machined and drilled for the guides.

Today's machining centers are being asked to perform a wide variety of operations at the highest speeds possible while, at the same time, maintaining a high quality of cut. Micro-vibrations are created around all types of CNC machining centers where there is head positioning, drilling, and high speed routing taking place on the machine base. SCM solves the problem of deadening vibration as well as offering rigidity by employing heavy gauge steel members for the base of the machine. This weight, coupled with the one-piece frame offers the best combination of rigidity and balanced strength on a bridge design. Movement along the X & Y is high precision rack and pinion while the Z-axis is driven by a ball screw.

High Precision, High Load Prismatic Bearing Guides

SCM uses prismatic guides for support in all axes. Due to their added weight load capability (approximately 4 times that of conventional round guides), prismatic type guides can permit accurate head positioning at high speeds.

A.C. Servo Motors X, Y & Z Axes

A.C. servomotors, or A.C. brushless motors as they are sometimes called, are the latest in electronic linear motion technology. A.C. servomotors use less power and produce a more even output (drive) throughout the power band. The ability to maintain a constant torque setting when going from an idle setting into a heavy rout produces cleaner cuts and longer tool life. These motors are controlled by digital supply cards that offer the reliability and precision fine tuning associated with solid state electronics.

Solid State Inverter Controls Router RPM

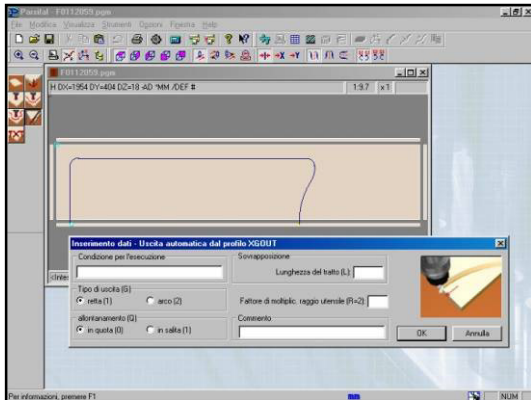
Solid State frequency inverters support the programmable router spindle speeds (S functions). By utilizing digital inverter technology, the programmer can select the correct cutter RPM and match it to the correct linear/rotational feed speed for the specific application and/or material being cut. This will give optimum quality of cut while greatly extending tool life. The inverter also acts as an electronic brake, stopping the router spindle motor in microseconds if an emergency signal is given.

Software

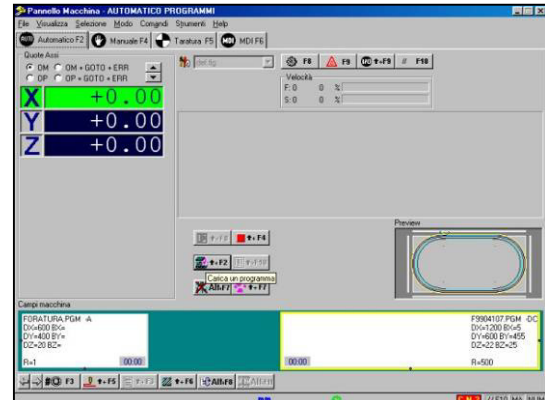
General features of the Machine Panel and Xilog Plus Programming software

XILOG PLUS is the SCM workstation management software developed as a highly flexible, powerful and user-friendly programming system.

- The beginner will immediately find himself at ease in front of the intuitive XILOG PLUS interface. There are many graphic aids that eliminate the need to learn particular instructions or programming language.
- The more experienced computer user will also find himself at ease in a Windows® based operating environment, including all the features that this implies (i.e., cut and paste, multiple opening of files, etc.).
- Those already familiar with previous SCM programs will be able to choose whether to manage the machine in the new graphic environment or to continue with the traditional input of programming instructions with the alphanumeric keyboard. Moving quickly from one environment to the other is very simple.



Graphic programming interface



Machine operation interface

XILOG PLUS has two applications – to aid in programming and to allow operation of the machine.

Graphic programming interface

This application is a powerful graphic/text editor that aids in programming. It manages program file as well as tooling information. Especially helpful are the built-in macros, shortcuts that are used in performing repetitive tasks (routing arcs, drilling shelf holes, etc.). Users can also customize macros for their own particular needs.

Machine Operation Interface

This application allows the operator to recall programs and run them on the machine. It tells the operator basic information about the program such as the working field, part size, etc. It also has a very powerful machine diagnostic section with photos and troubleshooting aids.

Additional XILOG PLUS features:

- Controlled acceleration and deceleration
- Linear and circular interpolation
- Self-diagnostics through error messages
- Dynamic tool correction via PLC due to active wear concerning space and time.
- Subroutine programming (canned cycle) with library
- Specular programming: Allows writing of programs two different multiple reference points. For example the Left or Right corner of a panel.
- Parametric scaling of programs through use of template type programs that the operator creates and stores in memory. Part programs can then be proportionally scaled up or down in size without the need to re-write the entire program.
- Programs can be viewed from all 5 faces
- Built in macros for simple, widely used programs
- On board cycle optimization

Configuration

- Machining Head graphic configuration;
- double override which allows to adjust the operating unit positioning speed;
- Machining Speed selection;
- SCM CNC - JERK function management for dynamic control of acceleration/deceleration.

(52.39.62 & 52.39.65) Xilog Maestro CAD CAM Free Form Software with Labeling (2 licenses)

Xilog Maestro programming software complete with nesting "free-form" and "Maestro Label" module. The Maestro Label module allows to manage the manual or automatic labelling included on the price list.

The module includes:
data management for label printer;
label templates management;
Label Manager viewer for the manual labels printing.

The advanced nesting Maestro module includes:

- Management of material stock
- Nesting import from CSV external file
- DXF / advanced DXF files import also from CSV external file
- Automatic "onion skin"
- Automatic offcuts management with labelling
- Dust grind
- Report of 5 different printings
- CU automatic optimisation and paths
- Manual nesting
- Rectangular nesting
- Free-form nesting
- Tubular nesting
- Approach/removal strategies
- Endless panels management
- Grains management
- 0-90 automatic panels rotation
- Free automatic rotation of panels
- Management of integrated support panel thickness
- Automatic work pieces contouring
- Automatic internal contouring
- Cutting depth adjusting
- Internals parts nesting of other geometries
- Diversified management of the sheets margins
- Use statistics
- Extra quantity management
- Automatic loading/unloading management



Xilog Maestro Training Course prior to Install (2 Trainees)

- This course is intended for designers, programmers or other individuals who are responsible for the programming of parts on a CNC Router or Machining Center utilizing the Xilog User Interface with Maestro CAD CAM software. It is designed specifically to teach the basic information necessary to design and produce programs for a SCM Group CNC Router.
- This course is a classroom-based in Carson, CA or Duluth, GA, interactive workshop that includes theory, practice and hands-on application. Attendees will learn about basic G-Code commands and how to utilize G-Codes within the Xilog User Interface. They will also gain a good conceptual understanding of Maestro Software and the ability to create and modify 2D drawings. Exercises focus on drawing, tool definition and machining methods such as Rough/Finish. Additional subjects include pocketing, engraving, drilling and nesting. Course is good for one year from installation.

Machine Operation

(63.03.73) Remote Pendant

The 7" COLOR display allows for the effective management of all machine functions from movement of controlled axes in Manual Jog Mode to loading and execution of a program. The unit is also fitted with a USB Port, which allows for a quick load and setup of new programs.



(63.03.57) Mobile stand panel with Stand-alone PC

It allows the programming directly on the machine without necessity of the programming in the office.

It is equipped with:

- Personal Computer
- Windows 7 operating system available in the following languages: Italian, English, German, French, Spanish.
- 17" LCD colour display
- Qwerty keyboard
- Mobile control panel
- Xilog Plus machine interface software



13HP (S6) Routing Unit

It includes:

- HSK F 63 quick release tool-holder
- 1500 - 24000 rpm spindle speed
- (S1/S6) 8/9,5 kW (11/13Hp) constant motor power from 12000 to 18000 rpm
- Right and left rotation
- Static inverter for continuous speed and rapid shutdown of rotation
- Exhaust hood around whole perimeter



Presetting for angular-driven heads

(63.03.44) Air blowers on the electrospindle

No.4 air blowers capable to convey the chips produced by the cutter during machining.. This facilitates the chip ejection.

(63.03.54) Touch Probe

Electronic system positioned on the base side which allows for detecting tool length without running a test program.

(63.04.05) TR 11 Position Tool Changer- Higher Capacity

- Maximum number of tools that can be installed: 11
- Tool attachment: HSK 63F

(63.04.05) Tool holder with higher capacity

Side tool holder with reduced inter axis, in order to accommodate a higher number of tools. Furthermore this code includes the exhaust hood with on-off automatic positioning and manual adjustment on 4 different positions
The new available places of the tool-holders are the following: TR8 increased to 11 places;



F12 Boring Unit

It includes:

- No. 12 independent vertical spindles (7 right and 5 left)
- Attachment for bits: M10 / 11 mm diameter
- Center-to-center distance between axes: 32 mm
- Rotation speed: 4.500 rpm
- 2,2 kW motor power
- Vertical ON/OFF stroke of each spindle: 60 mm



Inverter for boring head

It allows the rotating speed programming.

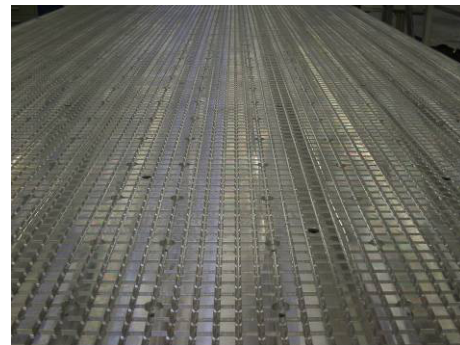
N.B. The passage between routing and boring and vice versa, implies to wait for the motor to stop.

Worktable for Component Nesting

High capacity aluminum table, with dual vacuum areas has an answer to most component nesting scenarios. The Vacuum holes set at 120 mm pitch, closure by means of rapid magnetic system “patent pending”. Grooves are set at 20mm from each other for fixing of the workpiece using rubbers seals.

In addition to nesting full sheets, the Pratix S12 can also be used for routing smaller components. For work on the face of the component, rubber gasket material can be used to isolate the vacuum for part hold-down. This eliminates the need for special fixturing devices as is necessary on many machines. When machining the edges of parts, the patented MODULSET system raises the component so work can take place without damage to the worktable.

The magnetic system for opening and closing the vacuum passages allows for an extremely quick table set up when the vacuum is only required in a portion of the table. With a dedicated tool (supplied) it is a matter of seconds to perform the set up with no need for a screw driver.



3 Right stops for “D” field of which no. 1 Side stop and no. 2 Rear Stops.

(63.03.53) 3 Left stops for "A" field of which no. 1 Side Stop and no. 2 Rear Stops

Dual Vacuum Area

Allows the operator to convey all vacuum to half the working area (left or right) or on the entire working area (left and right)

(63.04.06) Automatic Unloading System (Right to Left)

The Pratix S12 CR can be equipped with an outfeed pusher on the left side. The automatic workpiece pusher is connected to the machines movement in the X axis. It can push the components with up to a total weight of 150kg (330lbs.). Furthermore, it is equipped with an exhaust system that automatically cleans the spoilboard during the unloading phase. Automatic adjustment of the pusher height through a lining on the support panel (included in the machine supply)

- Top Exhaust outlet diameter: 300 mm (Oval)
- Bottom Exhaust outlet diameter: 200 mm
- Exhaust air speed: 30 mt/sec
- Exhaust air consumption: 3400 m3/h
- Max Weight - Kg 150 (330 lbs)
- Maximum thickness (spoilboard included): 40 mm



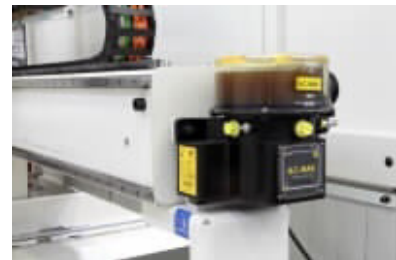
(63.03.56) One (1) 300 Cubic Meter/Hour Vacuum Pump

The vacuum hold-down system features a 300 cubic meter/hour vacuum pump. It offers the reliability of a substantial increase in vacuum power and allows the use of spoil boards for nesting full sheets. Optional additional vacuum pump must be external to the machine base.



(63.01.34) Automatic Lube

The correct grease level on the machine moving parts is always maintained by means of an electronic control (X,Y,Z axis)

**(63.03.43) Autotransformer**

Autotransformer allows the choice of 208 / 230 or 460 volt, 3-phase, 60 cycle

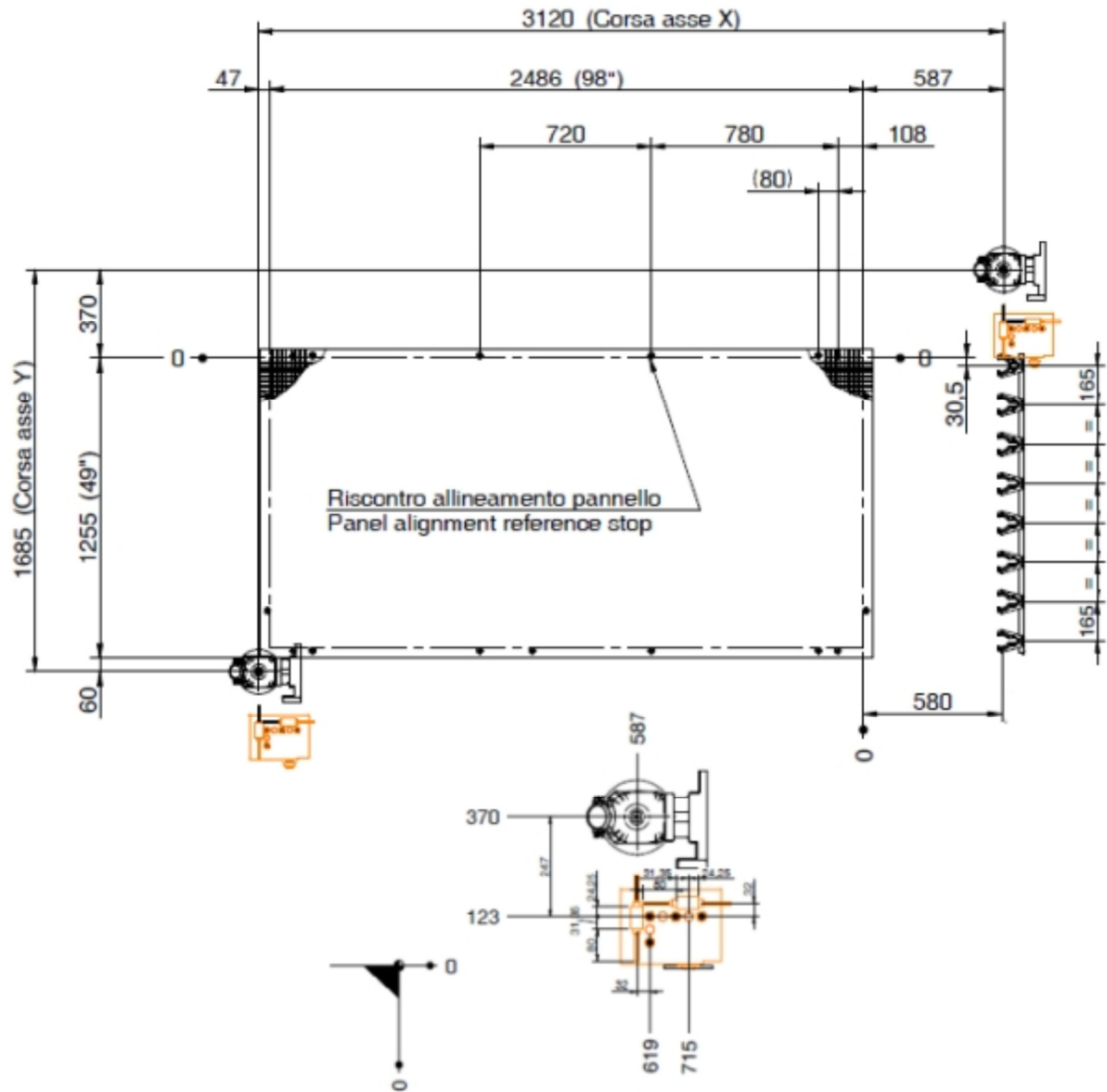
Safety Bumpers

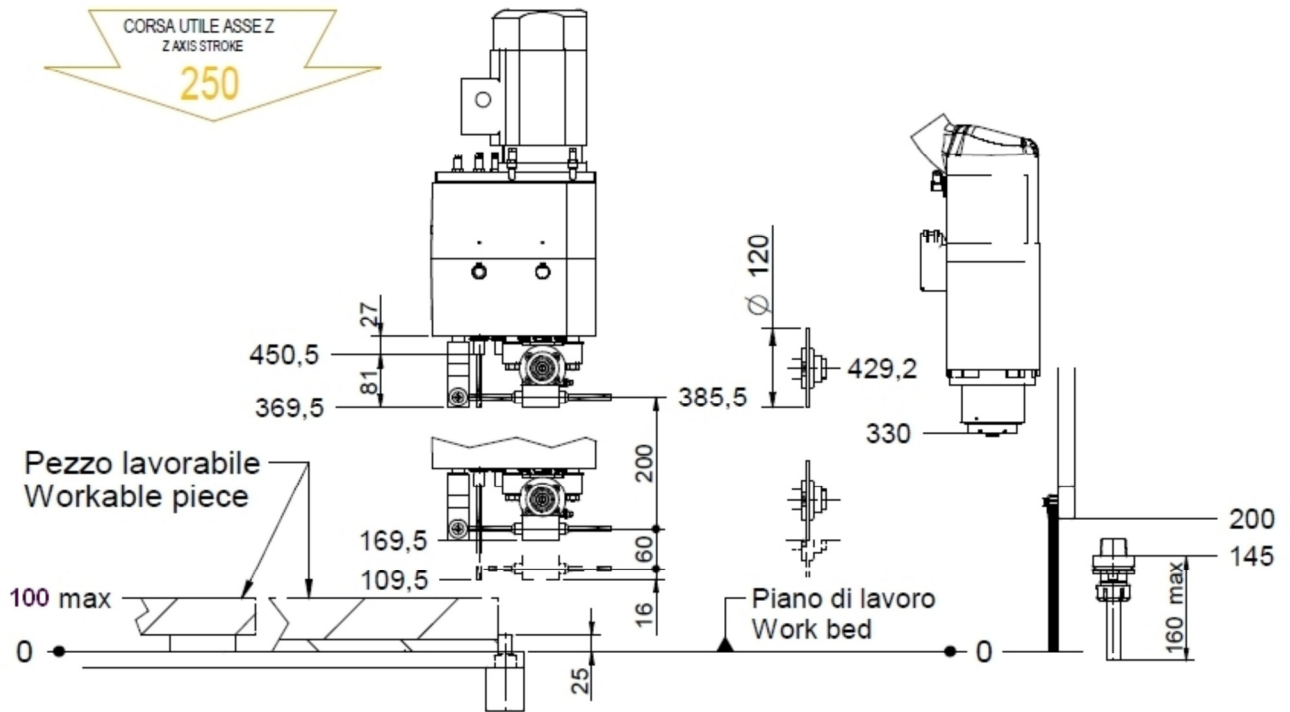
The SCM Pratix S12 is equipped with Bumpers on both sides of the mobile unit. This system allows for safe movement near the machine while saving floor space by eliminating peripheral protection normally required.

Technical Specifications:

Worktable dimensions: Length Width	2486 mm (97.87") 1255 mm (49.40")
Spindle (main) motor: Power (12) spindles Spindle rotation speed	3 HP 4500 RPM
Electrospindle	(11/13Hp) air cooled (S1/S6 rating)
Tool Changer Positions Attachment	11 position - Side attached to machine base HSK 63
Drilling Unit No. of vertical spindles (Optional) No. of horizontal spindles (Optional) Grooving blade	7 in X-axis , 5 in Y-axis 2+2 in X, 1+1 in Y Fixed in X direction
Maximum positioning vectorial speeds: X & Y axis	35 meters/minute (115 feet/minute)
Z axis Stroke Panel passage Routing Panel passage Drilling	250mm (9.84") 150mm (5.90") 100mm (3.93")
Dust extraction required	Top 300mm Oval (11.8") Router/Rake (3535 CFM) Bottom 200mm (7.87") Down Draft (1570 CFM)
Operating air pressure (3/4" I.D. hose)	7 ATM (102 psi)
Installed power (dependent upon options)	23 – 28.5 KVA
Electrics	208/230/460 volts, 3-phase balanced, 60 cycles
PC Specifications (minimum): Operating system Monitor	Windows 7 17" Flat Panel

Drawings may show optional features.

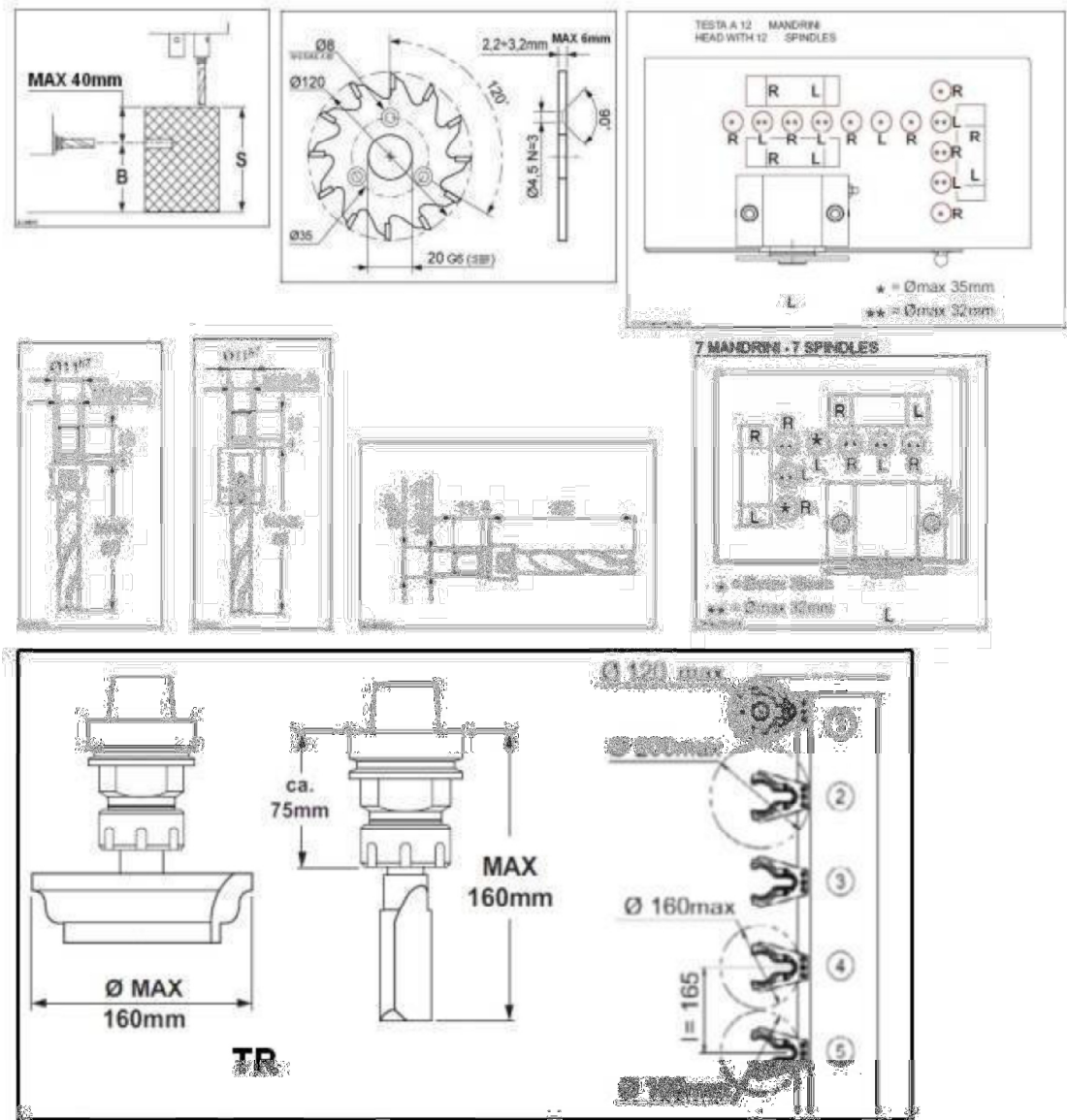




All measurements shown in the drawings are THEORETICAL, as they are subject to slight variations due to adjustments of the various units

Some items may be optional.

TOOL FEATURES



PRICE

Machine Price:	\$
Promotional Machine Price:	\$
Delivery:	FOB Duluth, GA or Carson, CA
Tooling:	Includes \$2,500.00 Leitz Tooling Voucher

Options:**(63.04.07) Outfeed Conveyor Belt Located on Left Side** **\$ 12,000.00**

Powered belt capable to move the workpieces from the machine table, up to the unloading position. This position is equipped with photocell automatic detecting system for the belt start/stop and pushbutton for the belt manual speed.

**(63.03.75) Additional 300 Cubic Meter/Hour Vacuum Pump****\$ 8,000.00****(63.03.19) Front Pins for E and H Fields Managed by NC** **\$ 1,000.00**

No. 3 front stops and no. 1 left lateral stop for E field; no. 3 front stops and no. 1 right lateral stop for H field. Total 8 stops. Does not include installation cost.

(63.01.27) Electric Cabinet with Air Conditioning Device **\$ 1,750.00**

It maintains temperature of approx. 18°C inside the electric cabinet. This option is advisable in environment with temperatures over 35°C. Does not include installation cost.

Jumbo Ergo Vacuum Tube Lifter (11.01.18.50020) with double gripper to lift wood panels up to 5' x 10' horizontally. 185 lb non-porous lift capacity.



Complete with:

- User-friendly ergonomic twist-grip for gentle & precise control of the system (variable lift speed and infinite hover height control). Wide handlebar for stable control while manipulating load. Automatically activated valve system to "lock on" to work piece.
- Highly durable 7" diameter vacuum lift tube with non-return safety valve retains vacuum in case of power outage allowing load to safely descend before release. Protective lift tube cover.
- 20" rigid handlebar extension.
- High-flow 4.8 HP direct drive vacuum blower with Heavy-duty dust filter. 230V/460V motor.
- 2" ID Vacuum supply hose connects between blower, dust filter, and vacuum lifter and is suspended along crane system out to the lift tube assembly.
- Double vacuum head DG-85-1200-SPT, 47" beam and two 9.6" x 5.7" pads.



Floor-mounted jib crane (11.01.01.50013)

- Gobel WSJ360-250-10-16 freestanding jib crane with 250 lb capacity, 16 ft span, and 10 ft height under boom. Includes festoon trolleys. Crane should be mounted in 6 inch deep concrete

Protective motor switch with 10-16 amp adjustable rating and outer enclosure box. (11.01.01.50015)

- Motor starter to provide on/off control of blower & protect from overcurrent.

Option Price:

\$15,000.00

Terms of Payment:

Terms of payment offered, or any terms agreed upon, are subject to credit approval.

This offer is subject to SCM GROUP NORTH AMERICA General Terms and Conditions of Sale.

Offer is subject to prior sale of the equipment.

Price quoted is for the machine as described above and is subject to change if the Specifications for the machine are changed at the request of the buyer.

Shipment:

Shipment is subject to delay should changes be made to meet the requirements of purchaser from manufacturer's design specifications stated herein.

Tooling:

Tooling is not included. Upon request, we can supply a quotation on the most suitable tools required for use on this machine.

Installation, Training, Service Rates and Conditions:

Installation, when purchased, will be performed by an SCM factory trained service technician or Certified Dealer Technician. Installation is to be understood as the assembly of the machine to the 'ready-to-run' state; it does not include floor, masonry work, the running of electrical, pneumatic or dust extraction services to the site. Training will be conducted on site by the service technician after installation has been completed.

This machine includes a 4 day installation, including travel time.

SCM Group is committed to maximizing your production time. Your machine may be preselected to contain automatic maintenance reminders. You can contact SCM Group North America Service Department at 866-216-2166 if and when you receive a maintenance message.

Warranty:

SCM warrants that the Machinery will be free of defects in workmanship and materials for a period of one (1) year beginning on the date the Machinery is accepted by the customer. This warranty includes belts, bearings, and common electrical parts, which carry a six-month warranty. This warranty does not include parts consumed during normal operation (wearable items) or maintenance required in the ordinary course of operation.

Presented By: Rob Howell
Product Manager

Date:

SCM Group NORTH AMERICA Inc. invites the Customer to carefully read this Price Quotation. Kindly make sure that SCM has not inadvertently omitted any portion or feature requested by the Customer and agreed with the SCM sales personnel. Should the Customer have any questions or require any clarification about this Price Quotation, kindly direct these questions or inquiries to:

Rob Howell
Product Manager
Phone: 770-622-6601
Mobile: 678-361-8635
E-Mail: rhowell@scmgroup.com

Leasing Contact:
Kevin Mellon
SCM GROUP North America Equipment Finance
Mobile: 404-759-3575
Fax: 770-813-8263
Email: kmellon@scmgroup.com

For any other inquiry, please feel free to contact:

SCM Group NORTH AMERICA, Inc.
2475 Satellite Blvd.
Duluth, GA 30096-5808
Phone: 770-813-8818
Fax: 770-813-2185

SCM Group North America,
933 Sandhill Ave
Carson, CA 90746



Equipment Finance Application

Company Name: _____ Email Address: _____

Address: _____ City: _____ State: _____ Zip: _____

Phone: _____ Fax: _____ Years in Business: _____

Address of Equipment location: _____

Company Website: _____ Tax Exempt Yes No Fed ID #: _____

Check One: Corp. LLC Partnership Sole Prop. State of Incorpor: _____

Bank: Include copy of first page of Company's most recent 3 months bank statements

Vendor Name: _____ Contact: _____ Equipment Cost: _____

Equipment Description (attach sales order if available): _____

Please complete the following information, and signature, of each officer:

Owner's Name: _____ Title: _____

Social Security Number: _____ % Owner: _____

Address: _____ City: _____ State: _____ Zip: _____

Owner's Name: _____ Title: _____

Social Security Number: _____ % Owner: _____

Address: _____ City: _____ State: _____ Zip: _____

Owner's Name: _____ Title: _____

Social Security Number: _____ % Owner: _____

Address: _____ City: _____ State: _____ Zip: _____

I hereby certify that the information contained in the lease application is true and accurate and I hereby authorize our banks, trade references and financial institutions the right to release credit information. In states where permissible, I hereby authorize the filing and recording of UCC financing statements showing the Secured Party's interest in the equipment and grant the Secured Party's right to execute lessee's/debtors name thereto. A photocopy of this authorization shall be as valid as the original.

Signature: _____ Title: _____

Please fill out the information and submit to: SCM Group Equipment Finance
2475 Satellite Blvd
Duluth, GA 30096

Phone: 800.292.1837
Fax: 770.813.8263
financing@scmgroup.com

Kevin Mellon
kmellon@scmgroup.com
404.759.3575

Blair Hundley
bhundley@scmgroup.com
770.238.8500

Andrew Mellon
ajmellon@scmgroup.com
678-822-1551