



Making Your Life Better.

Charlotte, August 4<sup>th</sup>, 2021

Sales office: Charlotte  
Attention: Justin Hersh

---

**OFFER NO.CFG21-2685-P-01**

between **Cefla North America**  
herein referred to as the "Seller"

and

**Group Delphi**  
950 West Tower Avenue,  
Alameda, CA - 94501  
United States of America

herein referred to as the "Buyer"

---

**Layout no. 21002685.1**

This offer is exclusively subject to the pro-tempore effective *General Terms and Condition of Sale* of the Seller, which are herewith considered as known, accepted and referred.

## PRELIMINARY TECHNICAL DATA

### WORKPIECE DIMENSIONS

The line will obtain the best quantity-quality results, under any work conditions, if defective pieces are eliminated right from the start, for example:

- ◆ curved or twisted pieces
- ◆ splintered pieces that would in any case not be reusable after coating
- maximum length **3000** mm
- minimum length **305\*** mm
- maximum width **1300** mm
- minimum width **19\*** mm
- maximum thickness **51** mm
- minimum thickness **6** mm
- max bow **10** mm
- internal min-max temperature **15-35** ° C
- minimum external temperature **-5** ° C
- working speed **2** m/min
- working height **900** mm

\* Minimum distance between leading and trailing edge 305mm to ensure safe part transition

### VOLTAGE

- |              |    |
|--------------|----|
| • <b>480</b> | V  |
| • <b>60</b>  | Hz |

**Electrical supply system: 480Y/277V**

**3 phases**

Present

**CE rules**

Of machine

### HEATING SUPPLY

<input type="checkbox"/> Water	<input type="checkbox"/> °C	<input type="checkbox"/> Electricity	
<input type="checkbox"/> Overheated Water	<input type="checkbox"/> °C	<input checked="" type="checkbox"/> Natural Gas	<input type="checkbox"/> <b>&gt;=345</b> mbar
<input type="checkbox"/> Steam	<input type="checkbox"/> bar	<input type="checkbox"/> GPL	<input type="checkbox"/> mbar
<input type="checkbox"/> Diathermic oil	<input type="checkbox"/> °C	<input type="checkbox"/> N/A	

### COMPRESSED AIR SUPPLY

- pressure 6 bar max.

### MACHINE COLOR

- RAL 7035

### LINE SERVICE SIDE

- RIGHT
- LEFT
- MIXED



## **WORKING CONDITIONS**

### **MARKET**

- Furniture

### **SUBSTRATE**

- Wood

### **PROCESS**

- Spray and drying

### **CUSTOMER PRODUCT SHAPE**

- Raised kitchen cabinet doors

### **TYPES OF STAINS/LACQUERS**

- Stain/Primer/Adhesive: Water based
- Sealer: Water based
- Top Coat: Water based

ITEM	DESCRIPTION	
------	-------------	--

1 **TB RBT: TIMED LOADING BELT CONVEYOR**

**TIMED LOADING BELT CONVEYOR TB 3740/RBT**

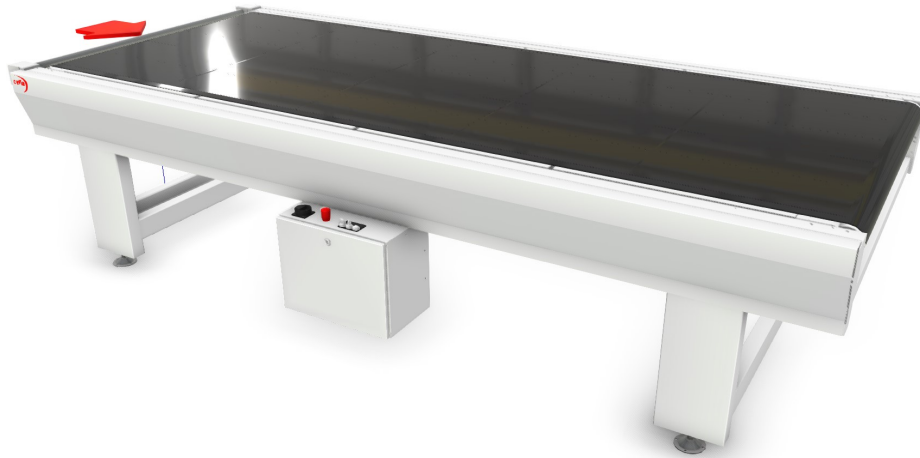
Abrasion and solvent proof antistatic belt, with no. 2 bands to prepare the length of panel charge.

Forward motion by means of gearmotor, inverter controlled.

Automatic stop controlled by timer.

Panel charge length 3500 mm.

Total length 3740 mm.



Electric equipment.

Standard speed from 3 to 20 m/min.

Installed electric power 0,75 kW.

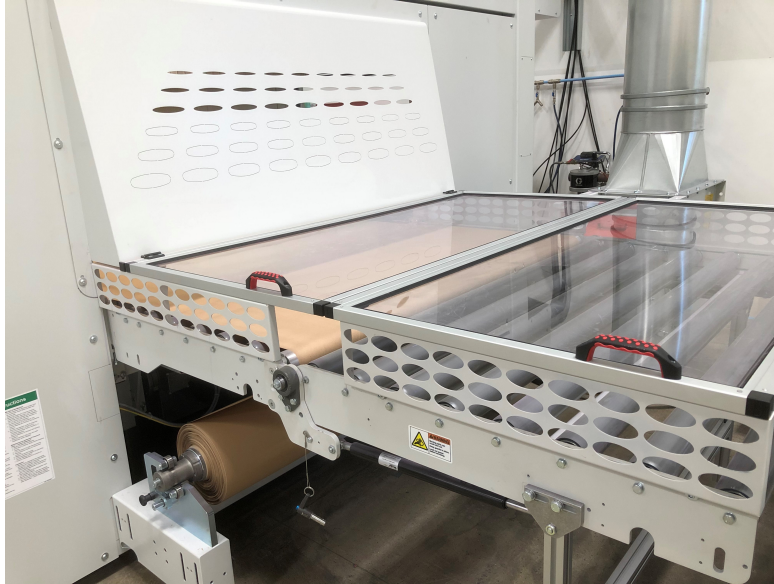
Independent electric board with PLC to manage automation functions.

Explosionproof motors execution.



2 **PRIMA P: RECIPROCATING SPRAYING MACHINE – EXISTING/ADD TO EXISTING**

ADD Tilttable conveyor covered outfeed





Making Your Life Better.

### 3 **TB: BELT CONVEYOR**

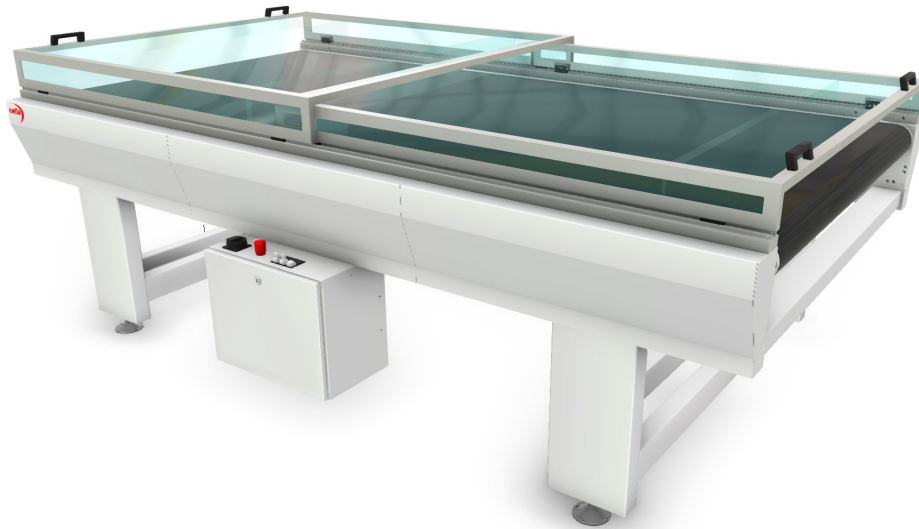
#### **BELT CONVEYOR TB 3000**

Abrasion and solvent proof antistatic belt with raised ribs.

Forward motion by means of gearmotor, inverter controlled.

Length 3000 mm.

CT – N. 3 meters of Plexiglas protection cover for thickness max 120mm



Electric equipment.

Independent electric board.

Standard speed from 3 to 20 m/min.

Installed electric power 0,75 kW.

Explosionproof motors execution.

#### 4 **UNIDRY-G: HOT AIR DRYING CONVEYOR**

High performance, fast catalytic drying conveyor with six HT-200 Sun-Spot heads. The technology uses a mixture of fresh air and gas to generate effective infrared medium waves. The HT-200 "Sun-Spot" pads produce tremendous, but controlled heat within the coating film that forces the curing of any type of organic coating through molecular excitation.



##### Drying features:

- Flameless catalytic heating heads
- Independent control panels for temperature control.
- Quick ramp up time
- Accurate temperature control using built-in pyrometer for measuring the surface temperature to avoid overheating with an accuracy of  $\pm 3^{\circ}\text{F}$  ( $\pm 1.6^{\circ}\text{C}$ )
- High temperature resistant conveyor belt

##### Environment:

- Volatile Organic Compounds (VOC's), solvents and other polluting chemicals are decomposed at the molecular level.
- Catalytic combustion of natural or propane gas generates exclusively carbon dioxide (CO<sub>2</sub>) and water vapor (H<sub>2</sub>O).
- System eliminates emissions of carbon monoxide, nitrogen oxides and unburnt hydrocarbons into the atmosphere.



Making Your Life Better.

**GENERAL TECHNICAL DATA:**

- Total length	4000 mm	
- Width	1705 mm	
- Height	1825 mm	
- Working height for pieces in transit max.	80 mm	
- Propane consumption	15,000 BTU/HR	<i>Per "Sun-Spot head"</i>
- Natural Gas consumption	13,500 BTU/HR	<i>Per "Sun-Spot head"</i>
-		

Conveyor electric equipment:

Independent electric board.  
Standard speed from 3 to 20 m/min.  
Installed electric power 0,75 kW.  
Explosionproof motors execution.





5 **TB-2V: TWO-SPEED BELT CONVEYOR**

**TWO-SPEED BELT CONVEYOR TB 1000/2V**

Abrasion and solvent proof antistatic belt.

Forward motion by means of gearmotor, inverter controlled. Instantaneous speed change-over driven by high precision photocell barrier.

Length 1000 mm.

CT – N. 1 meter of Plexiglas protection cover for thickness max 120mm



Electric equipment.

Independent electric board.

Standard speed from 3 to 20 m/min.

Installed electric power 0,75 kW.

Explosionproof motors execution.



6 **TB-2V: TWO-SPEED BELT CONVEYOR**

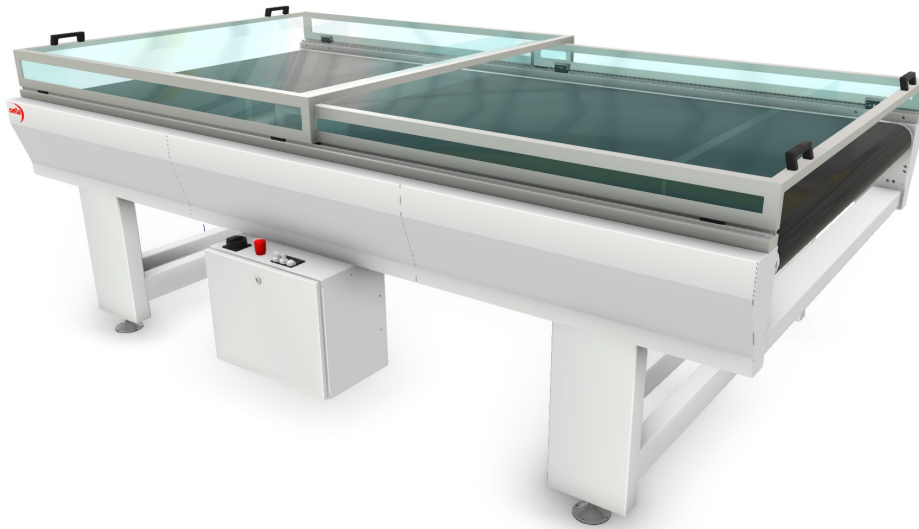
**TWO-SPEED BELT CONVEYOR TB 3000/2V**

Abrasion and solvent proof antistatic belt.

Forward motion by means of gearmotor, inverter controlled. Instantaneous speed change-over driven by high precision photocell barrier.

Length 3000 mm.

CT – N. 3 meters of Plexiglas protection cover for thickness max 120mm



Electric equipment.

Independent electric board.

Standard speed from 3 to 20 m/min.

Installed electric power 0,75 kW.

Explosionproof motors execution.

7 **UVR-SP: UV-R SP OVEN FOR COATED RAISED PANELS - EXISTING**



8 **TR: ROLLER CONVEYOR**

**ROLLER CONVEYOR TR 3500**

PVC coated motorized rollers diameter 66 mm, pitch 125 mm.  
Forward motion by means of gearmotor, inverter controlled.  
Length 3500 mm.



Electric equipment.

Independent electric board.  
Standard speed from 3 to 20 m/min.  
Installed electric power 0,75 kW.  
Explosionproof motors execution.  
High resolution Outfeed photocell.

- **INTERC: ELECTRIC LINE INTERLOCKING**

Interlocking with inter-blocks.  
Electric wiring complete of cables.

**NOTE:**

**ALL/ANY LAYOUTS AND PHOTOGRAPHS INCLUDED IN THIS OFFER ARE ABSOLUTELY APROXIMATE AND NOT BINDING FOR THE VENDOR; SUBJECT TO CHANGE WITHOUT NOTICE FROM THE VENDOR.**