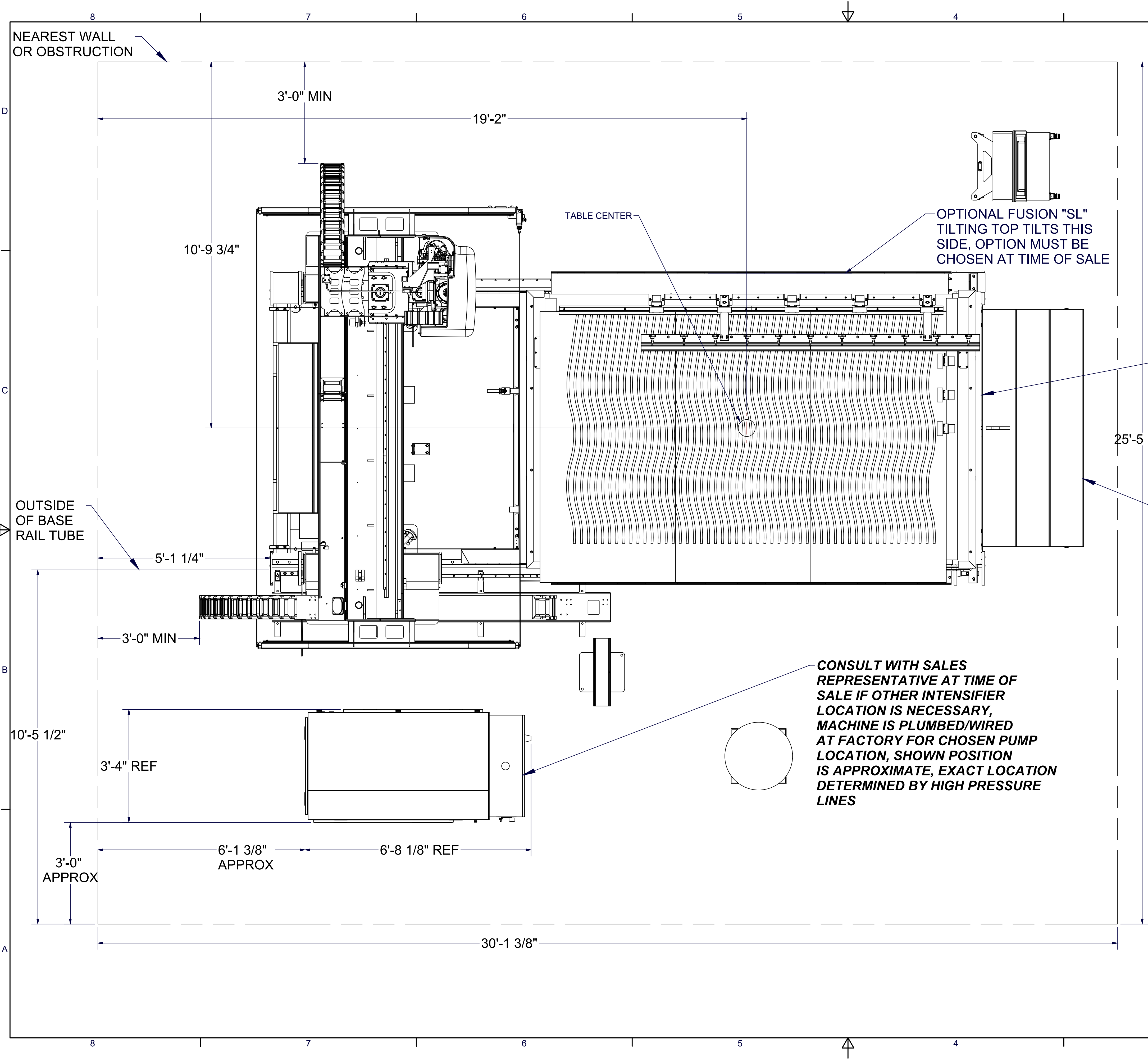


STANDARD PUMP LOCATION

PUMP LOCATION MUST BE DETERMINED AT TIME OF SALE, ADDITIONAL HIGH PRESSURE LINE/WIRING REQUIRED FOR ANY LOCATION OTHER THAN STANDARD. MACHINE IS PLUMBED/WIRED AT FACTORY FOR CHOSEN LOCATION



OPTIONAL FUSION "SL" TILTING TOP TILTS THIS SIDE, OPTION MUST BE CHOSEN AT TIME OF SALE

"FRONT" OF MACHINE

STAIRS

CONSULT WITH SALES REPRESENTATIVE AT TIME OF SALE IF OTHER INTENSIFIER LOCATION IS NECESSARY, MACHINE IS PLUMBED/WIRED AT FACTORY FOR CHOSEN PUMP LOCATION, SHOWN POSITION IS APPROXIMATE, EXACT LOCATION DETERMINED BY HIGH PRESSURE LINES

Utilities
 Power: 480V, 3PH, 60HZ, 84.1FLA
 Air: 100 PSI (min), 21 SCFM, 1/2" ID Line
 Water:
 -Saw: 50-60 PSI, 3-10 GPM, 50 MIC Filtered, 3/4" ID Line
 -Intensifier: 45 PSI (min), 1 GPM, .5 MIC Filtered

**FOR FACILITY PLANNING ONLY
 NOT FOR MACHINE INSTALL OR FINAL UTILITY SPECIFICATION. CONTACT PARK INDUSTRIES INSTALL COORDINATOR FOR INSTALLATION PRINTS AND FINAL UTILITY SPECIFICATIONS**