

SURVIVOR® RL2100 HE Heavy-Capacity Weigh Module

RICE LAKE
WEIGHING SYSTEMS
www.ricelake.com

*As of: Thursday, October 10,
2024*



Standard Features

Complete Kit Includes

- Three or four RL2100 HE stainless steel compression mounts with NTEP Certified RL75060S or RL75058S-LP stainless steel, welded seal double-ended beam load cells
- One JB4SS NEMA Type 4X stainless steel signal-trim junction box
- 25 ft of our hostile environment EL147HE SURVIVOR load cell cable

Standard Features

- NTEP Certified load cells, 5,000 d, Class III L/10,000 d, Class III L multiple cell

Approvals



- All stainless steel construction
- Bolt-in-place design; module bolts directly to tank leg without requiring additional load buttons or mounting plates
- Self-checking design with lift-off/tip-over protection

Applications

- Heavy-capacity tanks, blenders, reactors and bulk inventory management
- Petroleum refining process control
- Blending/batching

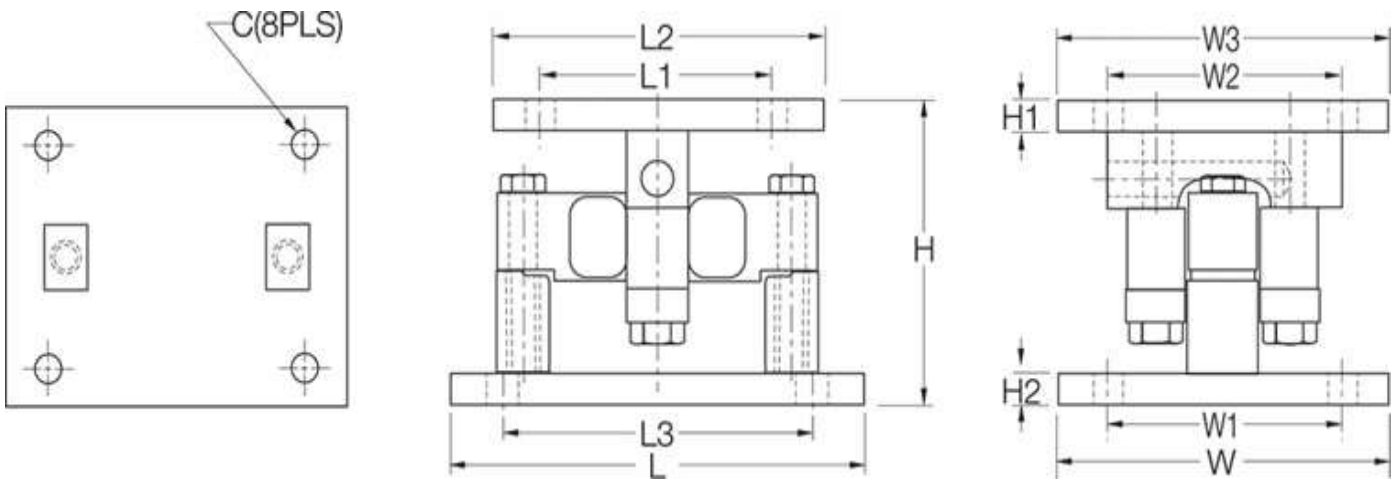


WARNING:
Cancer
and
Reproductive
Harm
California
Proposition
65

Dependable Weigh Modules

Incorporating an articulating load plate, hardened load pin and double-ended beam load cell into one simple design, the SURVIVOR RL2100 HE weigh module tolerates eccentric loads and side loads of up to 100 percent of capacity. The RL2100 HE weigh module comes standard with NTEP Certified, 1:5000 division Class IIIIL load cells, yielding up to 0.02% total error. An integral conduit adapter offers added washdown protection. These standard features give the RL2100 HE weigh module accuracy and dependability in one heavyweight package. The simple load introduction and load cell design provides consistent accuracy in washdown applications, making the RL2100 HE weigh module ideal for high-capacity hostile environments.

Survivor RL2100 HE Dimensions



Rated Capacity	C	H	H1	H2	L	L1	L2	L3	W	W1	W2	W3
lb/inches												
20,000 to 25,000	0.78	6.85	0.75	0.75	10.00	6.00	8.00	7.50	8.00	6.00	6.00	8.00
35,000 to 100,000	1.13	9.42	1.00	1.00	14.00	6.50	9.00	11.50	10.00	7.50	6.50	9.00

Parts

Part # Description

Single Module Kit (Includes Load Cell)

32951	Mount ASSY,2100HE 20,000lb SST HS Compression Incl RL75058S-LP 20k
65541	Mount ASSY,2100HE 25,000 lb SST Incl RL75058S-LP 25k Load cell
32952	Mount ASSY,2100HE 35,000lb SST HS Compression Incl RL75060S-N5-35k
32953	Mount ASSY,2100HE 50,000lb SST HS Compression Incl RL75058S-LP 50k
32954	Mount ASSY,2100HE 60,000lb SST HS Compression Incl RL75058S-LP 60k
32955	Mount ASSY,2100HE 75,000lb SST HS Compression Incl RL75058S-LP 75k
32956	Mount ASSY,2100HE 100,000lb SST HS Compression Incl RL75060S-N5-100k

3-Module Kit

32970	Mount Kit,2100HE 3ea 20,000lb SST HS Compression Incl RI75058S-LP 20k and JB4SS
65984	Mount Kit,2100HE 3 EA 25,000LB SST WS Compression Incl RL75058S-LP 25K and JB4SS
32969	Mount Kit,2100HE 3ea 35,000lb SST HS Compression Incl RL75060-N5-35k and JB4SS
32968	Mount Kit,2100HE 3ea 50,000lb SST HS Compression Incl RL75058S-LP 50k and JB4SS
32967	Mount Kit,2100HE 3ea 60,000lb SST HS Compression Incl RL75058S-LP 60k and JB4SS
32966	Mount Kit,2100HE 3ea 75,000lb SST HS Compression Incl RL75058S-LP 75k and JB4SS
32965	Mount Kit,2100HE 3ea 100,000lb SST HS Compression Incl RL75060S-N5-100k and JB4SS

4-Module Kit

32964	Mount Kit,2100HE 4ea 20,000lb SST HS Compression Incl RL75058S-LP 20k and JB4SS
65983	Mount Kit,2100HE 4 EA 25,000LB SST WS Compression Incl RL75058S-LP 25K and JB4SS
32963	Mount Kit,2100HE 4ea 35,000lb SST HS Compression Incl RL75060S-N5-35k and JB4SS
32962	Mount Kit,2100HE 4ea 50,000lb SST HS Compression Incl RL75058S-LP 50k and JB4SS
32961	Mount Kit,2100HE 4ea 60,000lb SST HS Compression Incl RL75058S-LP 60k and JB4SS
32960	Mount Kit,2100HE 4ea 75,000lb SST HS Compression Incl RL75058S-LP 75k and JB4SS
32959	Mount Kit,2100HE 4 ea 100,000lb SST HS Compression Incl RL75060S-N5-100k and JB4SS

www.ricelake.com | 800-472-6703

An ISO 9001 Registered Company ©2023 Rice Lake Weighing Systems