



INVOICE

Invoice No.	Invoice Date	Due Date
1566-1	11/5/2021	Upon Receipt

630 Third Ave.
 PO Box 749
 Jasper, IN 47546
 Tel: (812) 482-3644 Fax: (812) 482-3544

BILL TO:
M & M Recreation, LLC Attn: Frank Ginolfi 20 Commerce Blvd. Succasunna, NJ 07876

SHIP TO:
M & M Recreation, LLC Attn: Lee Weinberg 3500 S. Highway 287 Corsicana, TX 75109

Purchase Order No.	Project No.	Sales Rep	Quote No.	Payment Terms
TBD*	1566	Annalisa Moeller	21-0196-5	See below

Line	Item No.	Item Description	Project Price	% Due	Amount Due
1		SR-12 - Pneumatic controls - (1) Binks pump circuit	\$ 44,260.00	35.00%	\$ 15,491.00
2		Super Ion Air Knife	\$ 4,910.00	35.00%	\$ 1,718.50
3		Freight	\$ 3,375.00	35.00%	\$ 1,181.25
		<u>Equipment Serial Number(s):</u> 6482			
		<u>Payment Terms:</u> 35% with order 60% prior to ship 5% net 30 days after shipment			
		* Ref. quote signature page sent by Frank Ginolfi 11/2/21			

Questions about this invoice? Email accountsreceivable@duboisequipment.com	Subtotal		\$ 18,390.75
	Sales Tax	0.0000%	\$ -
	Total		\$ 18,390.75
	Payments/Credits		\$ (18,390.75)
Dubois Equipment Company, LLC FEIN: 47-4783754		Balance Due \$ -	

We are pleased to submit our quotation for the following
Dubois Model SR-12 Linear Spray Machine



Presented To:
M & M Recreation



Overview:

The Dubois SR-12 Linear Spray Machine is an automated Linear finishing machine that can be used for a variety of applications including priming, staining, sealing, lacquering, etc. of linear stock. The SR-12 is comes with 6 spray arms as standard along with a filtered exhaust system to maintain a clean operating environment.

Machine Includes:

- Infeed guide fence
- Top roller hold down on infeed
- Variable speed conveyor
- 1/2 hp reduced AC motor with variable speed drive
- Completely enclosed steel booth and overspray chamber
- Capable of one or two pump circuits
- Six gun arms included on machine
- Manual gun trigger for each gun with triggering air line
- Pump pressure regulator for each pump circuit
- Atomization regulator for each gun
- Ability to enable/disable individual guns
- 15" exhaust fan unit with 1-1/2 hp variable speed drive
- Filter system with high efficiency overspray arrestors
- Three easily cleaned spray troughs

Specifications:

Machine dimensions: L x W x H: 120" x 62" x 96"

Machine weight: 2500 lbs.

Maximum part width: 12"

Minimum part length: 30"

Maximum part height: 3"

Line height: 36"

Maximum line speed: 200 ft./min.

Minimum compressed air pressure required: 80 psi

Maximum air consumption: 1 pump circuit = 17 scfm @ 80 psi (min)

2 pump circuit = 20 scfm @ 80 psi (min)

Exhaust CFM: 3,400 cfm

Compatible with both waterborne and solvent based coatings



PROPOSAL

Proposal Number: 21-0196-5

November 1, 2021

Select Electric or Pneumatic Control (2 - 4 Week Delivery Time)

Qty.			
0	<u>Base Price with Electric Control MSRP:</u>		\$0.00
	· 480 VAC/3 Phase/60Hz or optional 240 VAC		
	· PLC control		
	· Photo electric array part sensor		
	· Extraction prove switch		
	· HMI Touchscreen control panel		
	· Individual gun trigger valves for triggering on/off delays for each gun		
1	<u>Base Price with Pneumatic Control MSRP:</u>		\$34,002.00
	· 240 VAC/3 Phase/60Hz		
	· <i>Does not</i> include a PLC or operator screen		
	· Pneumatic part sensor		
	· Common pneumatic on/off timers for triggering all guns on each pump		

Convert to a right-hand machine at no charge (left-hand is standard)

Specify

Add-Ons to Base Machine

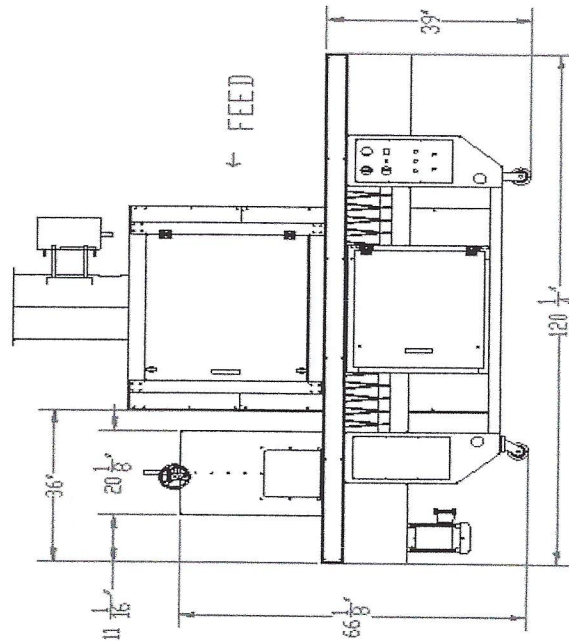
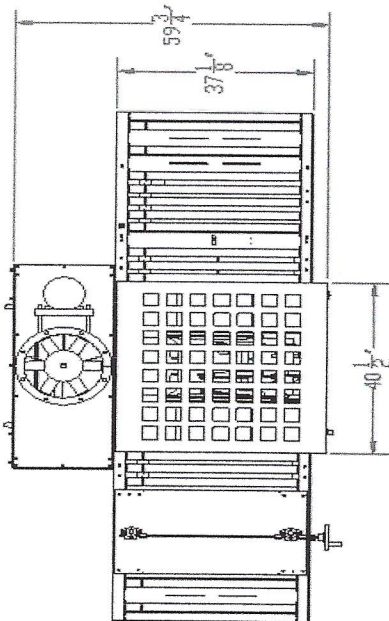
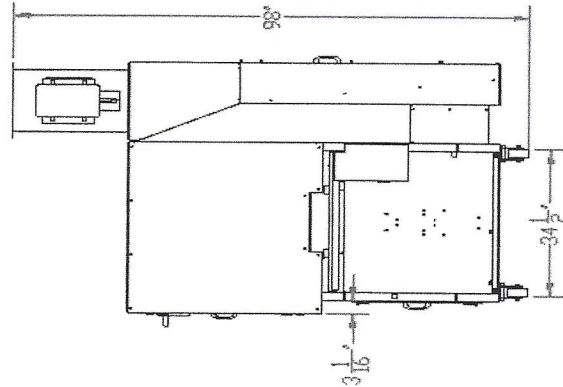
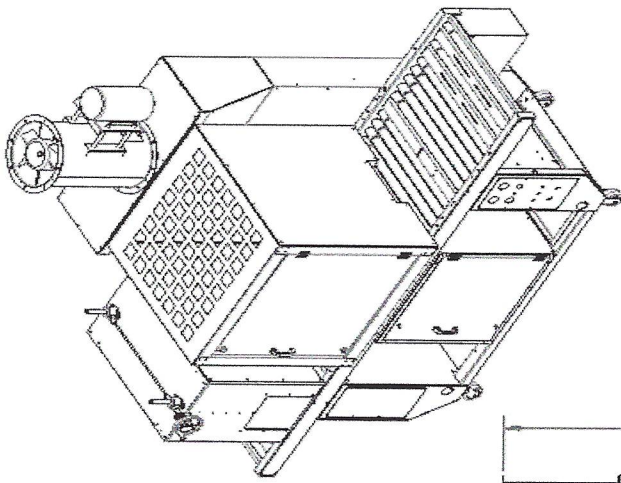
Qty.			
1	<u>1 Binks Pump Circuit MSRP</u>		\$10,258.00
	· 1 Siphon pickup tube for 5-gallon bucket		
	· 1 12:1 ratio piston pump		
	· 1 100 mesh stainless steel fluid filter		
	· 1 Fluid regulator		
	· 3 Air-assisted airless automatic spray guns with .013" orifices and required hoses and fittings		

Additional Options (8-10 Week Delivery Time)

1	<u>Super Ion Air Knife</u>	\$4,910.00
1	<u>Freight</u>	\$3,375.00

Total: \$52,545.00

SR-12 Standard Machine





TERMS AND CONDITIONS OF SALE

Dubois Equipment Company warrants only the mechanical performance of our machines. We cannot in any way guarantee or warrant the performance of standard wear parts, their life or costs, quality and appearance of machined surfaces, or other factors beyond our control.

Shipment: EX WORKS Dubois Equipment Company Jasper, IN. Shipping (freight) and handling fees to be quoted prior to order based on equipment specifications. If a customer arranges freight, a handling fee will be charged per quote.

Current projected shipment date: 2 - 4 weeks after receipt of 35% down payment and order acceptance for options included in 2 - 4 week delivery option. Approximately 8-10 weeks after receipt 35% down payment and order acceptance on all other options. We reserve the right to adjust the quoted delivery at the time we receive the actual down payment to accurately reflect our existing production requirements.

Terms and Conditions • 35% down with order
of Sale: • 60% prior to shipment

- 5% net 30 days, or upon acceptance at customer's facility, whichever occurs first.
- Subject to Dubois Equipment Company credit approval
- Receipt of a Purchase Order from the customer is considered acceptance of this quotation and terms and conditions. All Purchase Orders are subject to acceptance by Dubois. Acceptance and project initiation are subject to receipt of a mutually agreed Machine Order Requirement/ Specifications document

Validity: This quote is valid for thirty (30) days from issuance.

Taxes: The above prices do not include any applicable taxes.

Proposal prepared by: _____

Print name: Annalisa Moeller

Accepted by: _____

Print name: _____



CUSTOMER RESPONSIBILITY

1. Unload and position equipment at job site. Perform any building or floor modifications.
2. Where necessary, provide suitable roof and/or wall openings and flashing for stacks, hoods and dust (vacuum) connections and ductwork.
3. As required for installation and operation of the equipment, furnish services (electrical, compressed air, fuel, water, lighting, heating, etc.) to point of utilization.
4. Perform any desired field painting.
5. Obtain approval of equipment from insurance companies, obtain all licenses and permits required from city, county, and state agencies. Provide sprinkler systems or other fire protection equipment required by local codes.

DUBOIS EQUIPMENT RESPONSIBILITY

1. Provide installation, operating, and maintenance manuals. Manuals to include assembly drawings and bills of materials.
2. Furnish electrical schematics for equipment and field wiring.

OCCUPATIONAL

Based upon our interpretation of the Occupational Safety and Health Act, we believe this equipment complies with the safety standards. This equipment will operate at a noise level below 90 dBA.

WARNING! MACHINE OPERATION MAY BE HAZARDOUS

Normal operation of the machine or surfacing apparatus forming the subject machine of this quotation (the "Surfacing Apparatus") will be in compliance with those certain standards established by the Federal Occupational Safety and Health Administration (OSHA), provided that such operation is undertaken in accordance with the safety standards, methods and precautionary measures contained in this quotation and in the Operator's Manual accompanying the machine. Proper operation, service, maintenance and repair of the Surfacing Apparatus is important to the health and safety of the operator as well as to the safe and reliable operation of the machine, particularly those procedures relating to the control of air-borne particles created and present during normal operation of the machine.

In the event the preset quotation is accepted, the Purchaser acknowledges and agrees that it will operate the Surfacing Apparatus and all related equipment in accordance with those certain procedures set forth in this quotation and in the Operator's Manual, as well as those established by any governmental or administrative agency, exercising control over the operation of this machine, including the Federal Occupational Safety and Health Administration (OSHA) and applicable industrial or technical organizations including, but not limited to: The National Fire Protection Association (NFPA) and the American National Standards Institute (ANSI). Further, the purchaser assumes responsibility for integration of this Surfacing Apparatus into his Surfacing Operation System. All accompanying equipment (loading, unloading, dust collection, etc.) must comply with OSHA, NFPA, ANSI, or any other applicable code or regulation.

The purchase of the Surfacing Apparatus described herein is based upon Purchaser's agreement to operate the Surfacing Apparatus and the entire Surfacing Operation System in compliance with all safety procedures, including those Standards and Specifications of OSHA, NFPA and ANSI, as well as an acceptance by Purchaser of responsibility for any damages claimed to be occasioned or sustained by others due to the operation and/or use of this Surfacing Apparatus. This warning statement is supplemental to and is not intended to alter or replace those normal terms and conditions of sale by Dubois Equipment Company. Dubois Equipment Company recommends a spark detection and flame suppression system be installed by a reputable, qualified, industrial ventilation contractor for the safety of personnel and equipment.



Dubois Equipment Company - Standard Terms and Conditions

1. **TITLE:** The title and right of possession of equipment furnished under this contract shall remain with the Dubois Equipment Company, LLC, henceforth termed "Manufacturer", until the full and final payment is made according to the terms of payments as stated in the proposal, and agreed to by virtue of the receipt of the Customer's written purchase order.
2. **TAXES:** Any present or future sales, use, or other taxes, whether Federal, State, or Local, applicable to this contract are not included in the prices stated in the proposal, and when applicable shall be paid by the Customer without cost or charge to the Manufacturer.
3. **MANUFACTURING SCHEDULE:** Shipping dates are approximate and are contingent upon the Manufacturer's current schedule on the date of order receipt and down payment, and the receipt of complete information from the Customer required to process the order. The Manufacturer shall not be liable for delays beyond his reasonable control.
4. **CANCELLATION:** Cancellation of an order prior to completion must be confirmed by written notification by the Customer. The cancellation charges to be paid to the Manufacturer by the Customer shall take into account, among other things, expenses and commitments to outside vendors already incurred by the Manufacturer at the date of cancellation notice. Any initial or other payments to the Manufacturer shall be credited to the cancellation charges.
5. **SHIPMENT:** Transportation and insurance charges shall be paid for by the Customer. Unless otherwise notified of shipping arrangements made by the Customer, the Manufacturer will select a common carrier of his choice based on competitive quotations. It will be the responsibility of the Customer to carefully inspect the shipment immediately upon arrival for possible shortages or damage, and to file any claims with the carrier's agent.
6. **INSTALLATION:** Unless otherwise specified in writing, it is the responsibility of the Customer to install the equipment and provide all electrical, pneumatic plumbing, ductwork, or other services required to place the equipment in an operating condition. Any guards or other safety devices provided are to be checked by the Customer for performance prior to use of the equipment, and on a daily basis thereafter.
7. **START-UP / OPERATOR TRAINING SERVICES:** Field services by the Manufacturer are not included in the quotation unless specifically noted under the Dubois Responsibility section of the quote.
8. **GOVERNING LAW:** The validity, performance, and all matters relating to the interpretation and effect of these terms and conditions shall be governed by the law of the State of Indiana, U.S.A., regardless of any conflict with statutes of any other state or governmental entity.
9. **SERVICE CHARGE:** A service charge will be added to accounts that remain unpaid beyond the Manufacturers stated terms. A charge of 1 % of the unpaid balance will be added monthly.
10. **WARRANTY:** The Manufacturer shall not be liable for any damages or loss incurred by the Customer due to improper installation, operation, or maintenance of the equipment furnished under the contract, or for subsequent alterations or changes performed on the equipment without the express consent of the Manufacturer. The warranties contained herein are exclusive and are given in lieu of all other warranties, expressed, implied, or statutory, including the implied warranty of fitness or merchantability for any particular purpose. The Manufacturer warrants that any parts of its own manufacture are warranted to be free from defects in materials and workmanship for a period of one year after shipment of the equipment. All parts purchased from outside vendors provided as part of the equipment are warranted only in accordance with those warranties that are furnished by the vendors. Manufacturer and Buyer acknowledge that Buyer's sole and exclusive remedy against Manufacturer shall be for the repair or replacement of defective parts as provided for herein and the warranty as stated above is in lieu of any other warranty or remedy. The above warranties do not include freight and field replacement labor and do not apply when, in the opinion of either the Manufacturer or outside vendor, the failure was caused by abnormal use.