

# **ERIEZ<sup>®</sup>** ***xtreme*** **METAL DETECTOR**

**TRUST ERIEZ TO PROTECT YOUR CUSTOMERS AND BRAND IMAGE**



**MADE IN USA**





**Xtreme**® Metal Detector is installed in the packaging plant of Smith's Hot Dogs. Smith's® is the official Hot Dog of the Pittsburgh Penguins.

Pittsburgh Penguins are a trademark of Lemieux Group, LP.



# *The Xtreme® Metal Detector*

Eriez' **Xtreme®** Metal Detector sets the standard for "best in class" performance and offers the greatest dollar-for-dollar value of any detector on the market. This feature-rich, multi-frequency unit is designed to achieve the highest levels of sensitivity to detect small ferrous, non-ferrous and stainless steel metal contaminants in packaged, loose and free-fall applications.

## **XTREME® SENSITIVITY**

The art of metal detection strikes a balance between absolute detection of all metal contaminants and elimination of false signals that slow down production. The **Xtreme** Metal Detector pushes that detection/productivity curve with the ability to detect 0.4mm spheres. As is the case with all metal detectors, it's critical to have your specific product tested to understand achievable results. This brochure will review factors that influence sensitivity on page four.

## **BEST-IN-CLASS VALUE**

Combine the **Xtreme's** benchmark-setting sensitivities with its feature packed controls in a high-pressure wash down aperture head... all at the price of a mid-range detector, and you've got the best dollar-for-dollar value on the market today. In its base package, the metal detector offers a huge 7" easy-to-use touch screen interface, multiple preprogrammed languages, easy set-up and reporting, multiple USB and interface ports, remote access and the standard high-pressure wash down design. You can not beat that value.



# *Xtreme*<sup>®</sup> Sensitivity & Control

## **SENSITIVITY**

The **Xtreme**<sup>®</sup> uses a balanced coil to detect minute changes in the signal. The signal is set at a frequency designed to “see” a product with a boundary, which is deemed within “normal range.” The boundary can be expanded or contracted based on product variation and user preference.

Any detection of a metallic object outside the normal boundary signals a metal detection event. A wide range of variables can affect a metal detector’s sensitivity. Some of these include:

### **Known variables affecting metal detectability**

- Product temperature
- Product characteristics like moisture and salt content
- Aperture opening size
- Packaging material – foil or recycled paper
- Packaging labels or markings

### **Unknown variables affecting metal detectability**

- Size, type and orientation of tramp metal
- Excessive vibration/improper installation
- Adverse electromagnetic interference



*The Xtreme<sup>®</sup> Metal Detector pushes the detection/productivity curve with the ability to detect 0.4 mm spheres.*





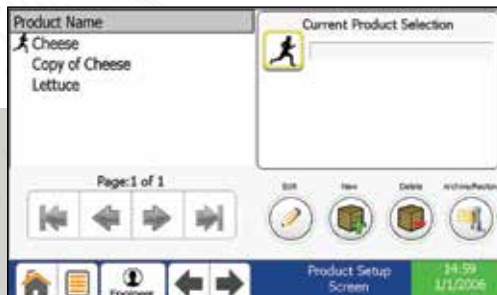
## XTREME® SOFTWARE

In addition to its rugged construction, the **Xtreme** Metal Detector offers easy-to-use set up, operation and reporting ... all from a large well-designed graphical interface.

### Set-up and Operation

While the **Xtreme** Metal Detector ships with factory pre-set setting for your products (based on actual testing and provided application data), adding new products or changing parameters is simple. The following are a few standard features:

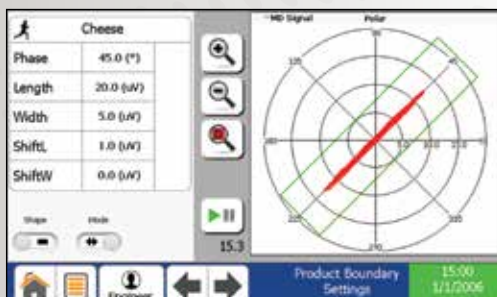
- Four password protected levels of access
- Auto set-up and product learning
- Easily change product boundaries/rejection
- One touch log reporting
- Eight fields of data recorded on a large flash drive
- Multiple communication ports – USB and Ethernet
- Log/tracks/rejects, on/off's, faults, warnings, product and setting changes, operator changes and much more



Product set screen



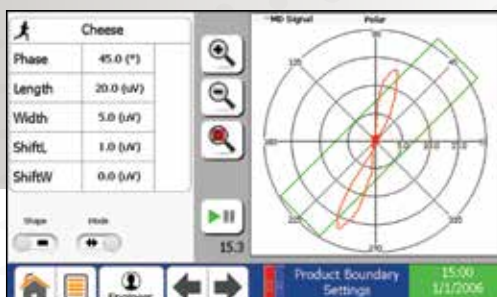
Main menu



Product boundary screen



Event log/reject log



Metal detected breaks the product boundary



## Remote Service & Troubleshooting

See Back Cover for Details

# Xtreme® Styles



## XTREME® TUNNEL

Eriez' **Xtreme** Tunnel Metal Detectors are custom manufactured to suit any in-line processing application where space is limited. The **Xtreme's** state-of-the-art technology ensures you are always detecting the smallest ferrous, non-ferrous and stainless steel contaminants.



## XTREME® TUNNEL DETECTOR WITH CONVEYOR

Tunnel Detector with Conveyor integrates the **Xtreme** aperture tunnel with a high-pressure wash-down conveyor. These systems can be ordered in a wide range of sizes with a myriad of optional equipment and are available in standard designs from our Quick Ship Program. Some of the main features include...

- Continuously welded 304 stainless steel construction
- Single point of power in 110/220 VAC
- Food-grade belts
- Tool-less disassembly available on standard design

*Conveyors are available with a wide range of optional equipment. Reject devices shown below.*

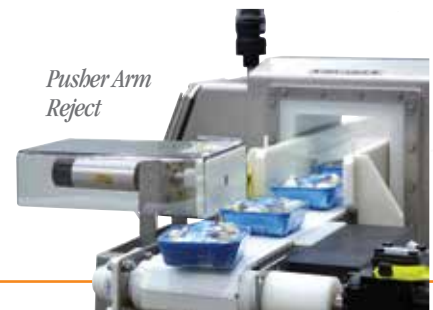
*Air Blast Reject with Lock Box*



*Diverter Arm Reject*



*Pusher Arm Reject*



## XTREME® LIQUID LINE

**Xtreme** Liquid Line Metal Detector systems are designed for liquids, pastes, slurries or other viscous products where high-sensitivity metal detection is required. The detector head, support plate and reject valve are constructed of 304 stainless steel. The system can be mounted vertically or horizontally.

- Kynar pipe with stainless steel tri-clover
- Available in pipe sizes 1.5"-4" diameter



## XTREME® PHARMACEUTICAL

The **Xtreme** pharmaceutical is designed to inspect tablets and capsules that are gravity fed from the tablet press.

- 1.5"H x 4.5"W or .9"H x 4"W aperture
- Polished 304 stainless steel sensing head and frame
- Tool-less disassembly for all product contact components for easy cleaning
- Two-piece, easy-to-remove throughput chute
- Compact design for space-restricted areas



## XTREME® VFS

The **Xtreme** Vertical Fill Seal (VFS) units are designed to mount into space-restricted areas below Vertical Form and Fill machines.

- Manufactured from stainless steel
- Remotely housed electronics
- 4" through dimension



## XTREME® WEBLINE

Eriez' **Xtreme** Weblines metal detectors are engineered for use on web or sheet applications.

- Stainless steel construction
- Narrow profile design
- Remote electronics



## XTREME® VERTICAL DROP

Eriez' **Xtreme** Vertical Drop detectors are engineered for use in gravity free-fall applications.

- Stainless steel construction
- Low-profile design



# The Xtreme® Metal Detector Quick Ship Program

Eriez' Quick Ship Program matches stocked conveyors and **Xtreme®** Metal Detector apertures to meet a one to two week delivery. Eriez stocks four conveyor widths and various sized apertures for quick assembly and delivery. Conveyors are available in 6", 12", 18" and 24" widths with a food-grade belt. The Program also enables Eriez to ship select sized heads in only a few short days!

Eriez' **Xtreme** Metal Detectors offer the highest level of protection against metal contamination, are competitively priced, and proudly designed and manufactured in the United States.

*Custom-size metal detectors and conveyors are also available. Contact Eriez today to learn more!*



*Smart Service Portal allows Eriez Service Technicians to troubleshoot remotely via the internet.*

## SAFE AND SECURE CONNECTIVITY

- The Remote Service Package requires an open outbound port. No incoming port required.
- A secure communication channel must be opened from inside the network to prevent unsolicited incoming requests.
- A single PC has access to all detectors to limit points of failure.
- Eriez technicians will only login to a customer machine with the approval of the customer.

## PACKAGE INCLUDES

- 1 secure gateway device
- Unlimited remote troubleshooting during Eriez business hours
- 5 after hours service calls/instances for one year after purchase
- Ability to connect an unlimited number of **Xtreme®** Metal Detectors to the Remote Service Package

*Smart X7 Link enables users to access/view their detectors via the company intranet*

- Make changes to detector settings
- Download reports

*Start-up and Test Kit (Included with Every Order)*



Eriez and Eriez Magnetics are registered trademarks of Eriez Manufacturing Co, Erie, PA

©2019 Eriez Magnetics

All Rights Reserved



**World Authority in Separation Technologies**

Headquarters: 2200 Asbury Road, Erie, PA 16506-1402 U.S.A.

Telephone: 814-835-6000 • Fax: 814-838-4960

www.eriez.com e-mail: eriez@eriez.com



Manufacturing Facilities: AUSTRALIA • BRAZIL • CANADA • CHINA • INDIA • JAPAN • MEXICO • SOUTH AFRICA • UNITED KINGDOM • UNITED STATES

419-1M-AHA-PC

ERIEZ MANUFACTURING CO ©2019

PRINTED IN USA