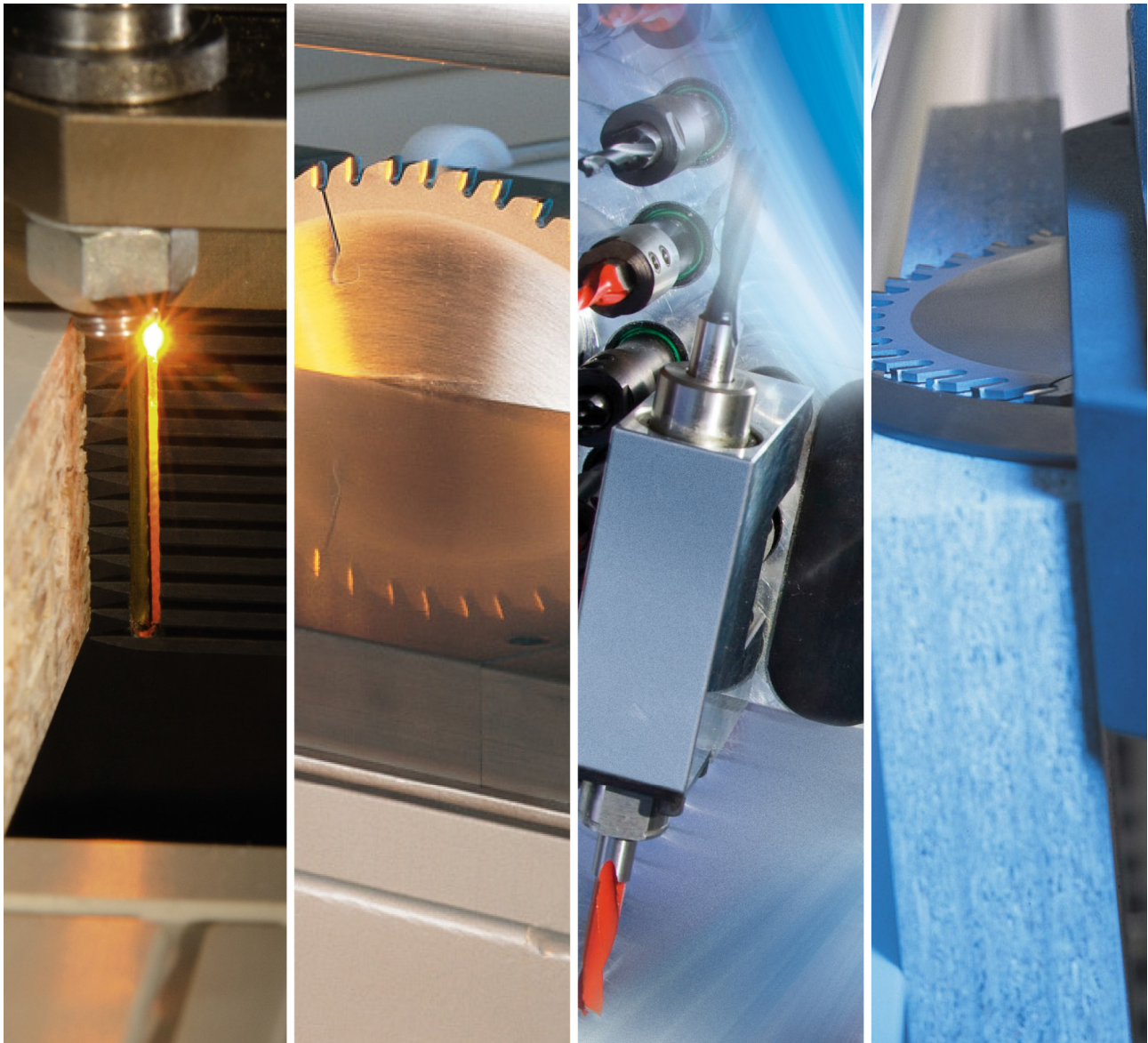


**Precision and productivity for the panel processing
Everything from a single source. Everything 100%!**



HOLZ-HER Edgebander STREAMER 1054

Your Holz-Her expert

Your benefit at a glance

STREAMER series

highest user-optimization, productivity, precision and safety for years thanks to heavy and rigid frame.

Control technique and operation

with turnable and tiltable control panel, dustproof.

Easiest operation through clear selectors including two temperature indicators for the optimal glue temperature directly at the glue nozzle.

Glue application system with nozzle technique

highest flexibility on glue application via **patented nozzle technique**
EVA and PUR glue can be handled without laborious and expensive accessories.

Glue is ready to use in form of cartridges.

Neutral or coloured glue can be changed quickly.

Lowest energy expenses thanks to **shortest heating time within 3 minutes**.

Unit technique

Basing on our 50 years experience concerning edge banders we supply modern and solid working units which have been developed continuously in order to grant high-class processing of edges and guarantee best product quality on all ready items.

Tooling technique

latest technical up-date on diamond driven milling technology with connected chip removal and patented Pro Lock collet chucks, each matching with your special application range.

Accessories

The wide range of accessories starts from the automatic adjustment of gluing height up to the automatic edge magazine for edge strips. Also retrofitting of the accessories is easily possible thanks to modelkit method.



HOLZ-HER Edgebander STREAMER 1054

**HOLZ-HER Edgebander STREAMER 1054 200 - 400 V / 60 Hz,
with manual pressure bridge adjustment**

Equipment according to following technical specification.

TECHNICAL SPECIFICATIONS

Edgebander for the edging and post-machining of materials in panel form (such as chipboard panels, MDF panels, tabletops, etc.)

Edging thickness of coiled edging: 0,4 - 3 mm
(depending on material)

Edging thickness of cut-length edging: 0,4 - 3 mm
(max. 6 mm with end trimming unit 1918)

Edging height: max. 65 mm

Panel thickness: 8 - 45 mm

(max. 8 - 60 mm with end trimming unit 1918)

Edging cross section: max. 6 x 42 mm

Workpiece width: min. 65 mm

Workpiece length: min. 160 mm

Feed speed: 10 m/min.

OPERATION



Turnable and tiltable control panel, ergonomically located on the inlet side with selector switches for adjusting the units with temperature control for the heating circuits in the adhesive application system

PRE-MILLING UNIT

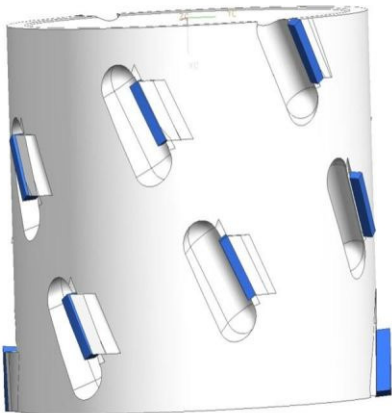


Pre-milling unit FG201 with 2 cutter units

for jointing the panel edge

1x counter clockwise run, 1x clockwise run

manually adjustable run-in linear stop, with patented ProLock screw-in clamping system for rapid tool change with adjustable cutters



Diamond cutter $\text{\O} 70 \times 48 \times 30$ mm, **2 teeth, left hand**

For pre-milling unit **1801 / 1802**

Diamond cutter $\text{\O} 70 \times 48 \times 30$ mm, **2 teeth, right hand**

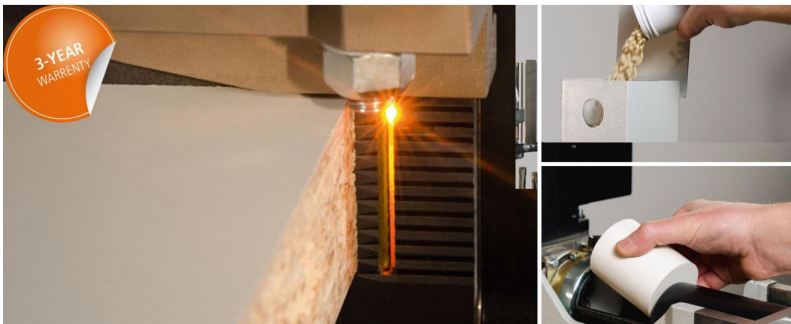
For pre-milling unit **1801 / 1802**

EDGE FEEDER

Edge feeder 1903

Automatic transport of coils and single strips
max. load capacity: 40 mm
max. edge thickness 3 mm (material dependent)
forward cut up to max. 65 mm (material dependent)
max cross section 135 mm² (material dependent)
support table for coils Ø 820 mm

GLUE APPLICATION



Glue application system Glu Jet GJ301 (2,3 kW, 50 Hz)
Automatic adjustment of gluing height (tracing nozzle)

Glu Jet hybrid technology

Processing of EVA and PUR adhesives
Adhesive in cartridge or granules form
Processing of neutral and coloured adhesives

For processing hot-melt adhesive in cartridge or granules form
Glue applied by means of nozzle technology, heat-up time: 3 minutes

Manual reloading of glue from the control panel
Incl. manual glue rinse function through separate rinse channel
Magazine capacity: 1 cartridge (approx. 330 g)
Incl. air pressure adjustment for the glue pressing cylinder
Automatic glue temperature reduction according to time

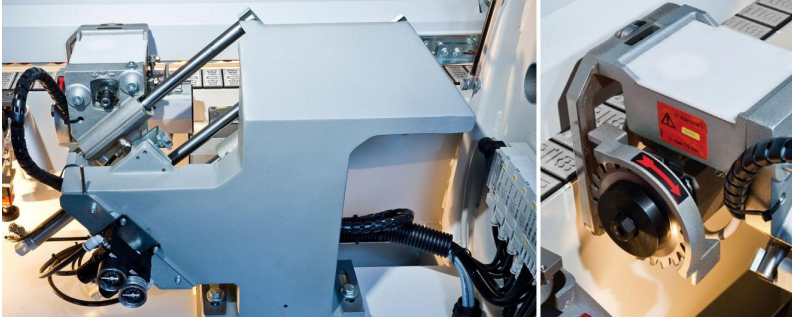
Hopper for 1,4 kg glue cartridges (4 cartridges)

PRESSURE UNIT

Pressure unit 1912-3 pneumatic

first roller driven with plunge-in control,
2 conical support pressure rollers

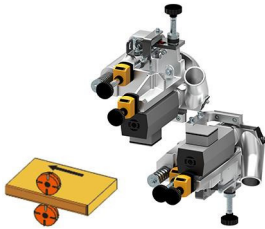
END TRIMMING UNIT



End trimming unit 1918 (60 mm) pneumatic

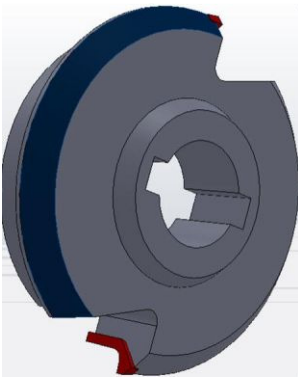
Chamfer-type end trimming 0/10 degrees, pneumatic adjustment
incl. 2 alternating teeth carbide circular saw blades, Ø 110 mm, 20
teeth

MULTIFUNCTIONAL TRIMMING UNIT



Trimming unit FR201 (2 x 0.6 kW, 300 Hz, 18,000 min-1)

Multipurpose unit for **flush trimming, radius and chamfering**



Diamond cutter Ø 57 x 17 mm Z = 2, R = 3,0 mm, left hand

diamond coated, permanently equipped tool with CM technology
(LEUCO), with integrated chip removal patented ProLock screw-in
clamping system for rapid tool change
for multifunctional trimming unit **FR201**

Diamond cutter Ø 57 x 17 mm Z = 2, **R = 3,0 mm, right hand**
diamond coated, permanently equipped tool with CM technology
(LEUCO), with integrated chip removal patented ProLock screw-in
clamping system for rapid tool change
for multifunctional trimming unit **FR201**

SCRAPER UNIT



Scraper unit 1929
with 2 scraper carriers, incl. change-over plates **R = 3,0 mm**
with 2 digital counters for horizontal sensing rollers and chip
removers
Workpiece thickness: min. 12 mm

Chip collector
for scraper unit 1929

FREE SPACE

Buffing unit 1940 (2 x 0.09 kW, 50/60 Hz, 1,400 min-1)
For cleaning and edge polishing,
with 2 textile discs, pivotable 0 - 5°
