



***Parts Manual for
QR-25® Series
Basic & Unit Compressors***

Model 5120

Record of Change 104

50221-104

July 1997

Q

U

i

n

C

y



INTRODUCTION

This manual provides information for the following QR-25 Series, Model 5120 (Record of Change 103 & 104) compressor versions:

P	Control Version P plain head assembly & no controls
L	Control Version L head assembly with 4 unloader towers & a hydraulic unloader
S	Control Version S head assembly with 4 unloader towers & a pilot valve
LS	Control Version LS head assembly with 4 unloader towers, a hydraulic unloader, & a pilot valve with a check valve assembly
LVD	Control Version LVD head assembly with 4 unloader towers, a hydraulic unloader, & a pilot valve with a lockout & check valve

These compressors are aircooled, two stage, four cylinder, pressure lubricated compressors, with up to 200 p.s.i. continuous pressure capability (*201 to 250 p.s.i. intermittent pressure capability with proper configuration; consult factory*). The Model 5120 has a 6" low pressure piston bore and a 3.25" high pressure piston bore and a 325" high pressure bore x 4" stroke and can be run at 400-1040 r.p.m.

Available options included in this manual:

- spin-on oil filter
- hooded air filter
- hooded air filter / silencer

CHANGES

since previous printing (dated February 1992):


- Record of Change 103 involved the addition of a side sealer ring, spring & scraper being added to the low pressure piston group
- a needle valve replaced the ball behind the oil pressure adjustment screw of the bearing carrier
- new pilot valve arrangements were introduced
- Quin-Cip oil information was added
- a hydraulic unloader repair kit was added
- Record of Change 104 involved the release of a new shroud group.

TABLE OF CONTENTS

Serial Number Identification	2
Ordering Replacement Parts	2
Quin-Cip Oil	2
Crankcase Group	3
Crankshaft Group	4
Bearing Carrier Groups	
with oil filter	5-6
less oil filter	7-8
Connecting Rod & Piston Groups	
Low Pressure	9-10
High Pressure	11-12
Cylinder & Head Groups	
Control Version P	13-14
Control Versions L, S, LS, LVD	15-16
Head Assemblies	
Control Version P	17-20
Control Versions L, S, LS, LVD	21-28
Control Groups	
Version L	29
Version S	30
Version LS	31
Version LVD	32
Shroud Groups	33-34
Pilot Valves	35
Pilot Valve Repair Kit	35
Differential Setting Charts	35
Suction Valve Unloader Assemblies	36
Gasket Set	37
Kits	37
Recommended Spare Parts	38
Decals	38

MODEL & SERIAL NUMBER IDENTIFICATION

Record
of
Change No.

MODEL	<input type="text"/>	<input type="text"/>
SERIAL NO.	<input type="text"/>	
Coltec Industries		
		
Quincy Compressor Division		

Model & Serial Number
Identification Tag

The model & serial number tag is located on the handhole plate side of the crankcase. Fill in the numbers from your compressor's tag in the corresponding spaces provided here and reference this page when ordering replacement parts.

All replacement parts are to be ordered through an authorized Quincy Compressor Distributor. Insist on genuine Quincy parts only! Failure to do so may void warranty.

ORDERING REPLACEMENT PARTS

Prompt service can be rendered on repair parts orders if the following information is given:

- Item 1)** the model number, record of change number, & serial number.
- Item 2)** the exact part number needed. (Do not order by item numbers.)
- Item 3)** the exact quantity needed.
- Item 4)** the preferred type of transportation

CAUTION !

Follow all safety precautions outlined in the QR-25 Series instruction manual.

WARNING !

Do not operate this compressor without a totally enclosed belt guard or any other required safety equipment.

DANGER !

Air used for breathing or food processing must meet O.S.H.A. 1910.134 or F.D.A. 21 C.F.R. 178.3570 regulations. Failure to do so may cause severe injury or death.

QUIN-CIP® OIL

Refer to the chart below to order Quin-Cip compressor oil from your local Authorized Quincy Distributor.

Package	Part No.	Description
Barrel	112541D032	55 gal., SAE 10W
Pail	112541P032	5 gal., SAE 10W
Gallon	112541G032	1 gal., SAE 10W
Gallon Case	112541X032	(4)-1 gal., SAE 10W
Quart	112541Q032	1 qt., SAE 10W
Quart Case	112541C032	(12)-1 qt., SAE 10W
Barrel	112542D068	55 gal., SAE 20
Pail	112542P068	5 gal., SAE 20
Gallon	112542G068	1 gal., SAE 20
Gallon Case	112542X068	(4)-1 gal., SAE 20
Quart	112542Q068	1 qt., SAE 20
Quart Case	112542C068	(12)-1 qt., SAE 20
Barrel	112543D100	55 gal., SAE 30
Pail	112543P100	5 gal., SAE 30
Gallon	112543G100	1 gal., SAE 30
Gallon Case	112543X100	(4)-1 gal., SAE 30
Quart	112543Q100	1 qt., SAE 30
Quart Case	112543C100	(12)-1 qt., SAE 30

CRANKCASE GROUP 110460-002

Item Number	Qty.	Part Number	Description
1	1	6640	crankcase
2	1	4357	bearing cup
3	2	6678	gasket, inspection plate
4	1	6645-1	inspection plate
5	1	110174-1	inspection plate
6	1	6727X	oil gauge assembly
6.1	1	6727	oil gauge bayonet
6.2	1	6726	oil gauge knob (N.S.S.; order 6726X001)
6.3	2	123157-210	"o"ring, 1/8" wide x 1.00 o.d.
7	1	2057	pipe plug, 1/2 npt
8	*	1498	bearing adjustment shim, .005 steel
9	*	1498A	bearing adjustment shim, .007 plastic
10	*	1498B	bearing adjustment shim, .020 steel
11	*	1498C	bearing adjustment shim, .002 steel
12	1	6643	adjustment plate
13	4	123478-N14	hex. screw, 1/2-13 unc x 1.25, grade 5 (@ 75 ft.-lbs.)
14	1	5518X1	breather assembly
14.1	1	5518	breather tube
14.2	1	111304	breather filter
14.3	1	6864	breather ball seat
14.4	1	5783	breather ball
14.5	2	110705-D15	roll pin, 1/8 x 1.12
15	1	6936	breather cap
16	20	110428N038	flatwasher, 3/8
17	20	123478-L12	hex. screw, 3/8-16 unc x 1.00, grade 5 (@ 30 ft.-lbs.)

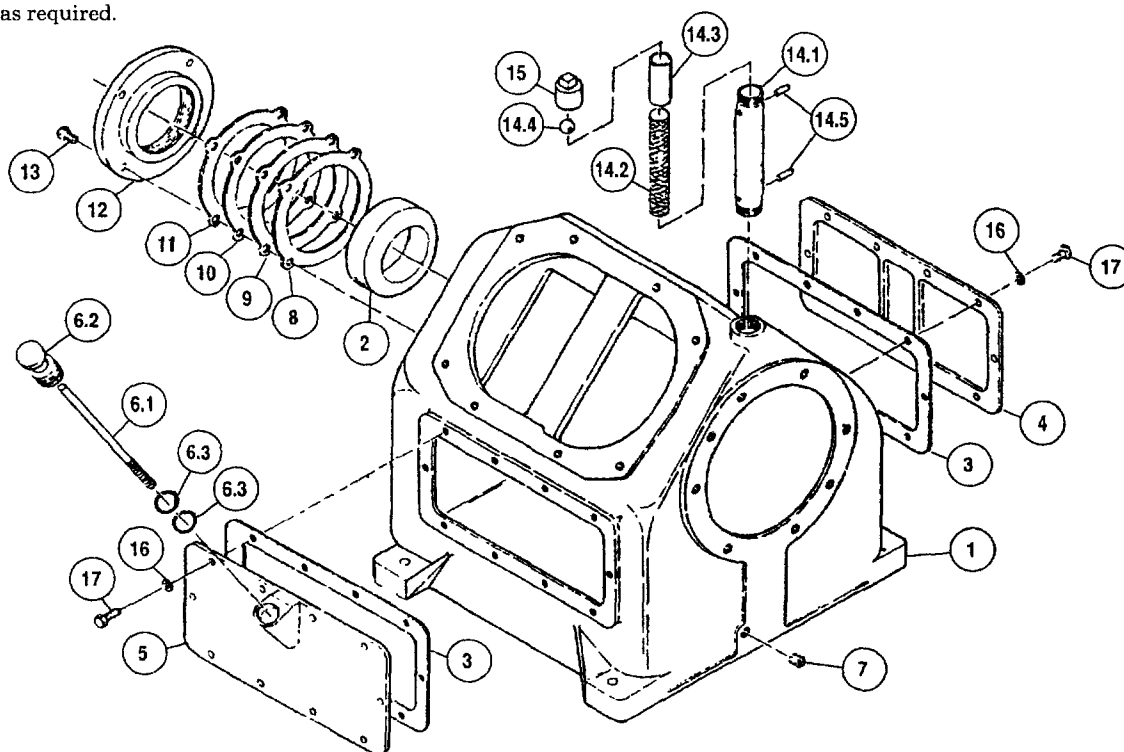
Parts for use with diester or phosphate ester synthetic based lubricants

6.3	2	22749-210	"o"ring, 1/8 wide x 1.00 o.d.
-----	---	-----------	-------------------------------

N.S.S. = Not Sold Separate

@ Indicates torque value in foot pounds (dry threads)

* Quantity as required.



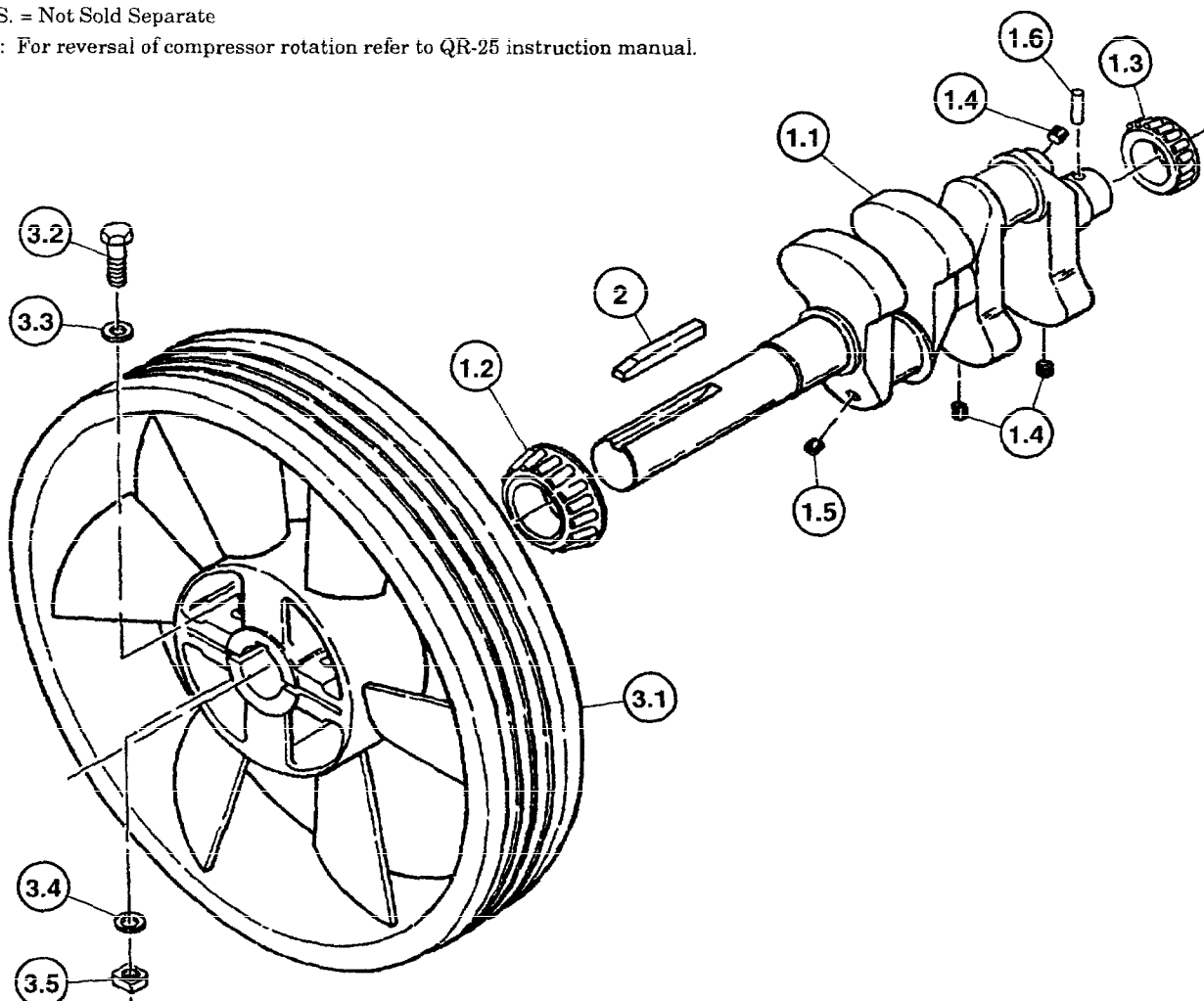
CRANKSHAFT GROUP 110461

Item Number	Qty.	Part Number	Description
1	1	110227-001	crankshaft assembly
1.1	1	7304-1R	crankshaft (N.S.S.; order 110227-001)
1.2	1	6651	bearing cone
1.3	1	40775	bearing cone
1.4	3	2755S	pipe plug, 1/4 npt
1.5	1	110234	orifice, 1/8 npt
1.6	1	110705-F21	roll pin, 3/16 x 1.88
2	1	2851	key
3	1	110558X	sheave assembly
3.1	1	8297-1R	sheave, 23-1/2", 4G, B section, ccw (N.S.S.; order 110558X)
3.2	2	124571-Q21	hex. screw, 5/8-18 unf x 3.00, grade 5 (@ 150 ft.-lbs.)
3.3	2	110428W062	flatwasher-5/8
3.4	2	123115-10C	lockwasher, 5/8
3.5	2	1883	square nut, 5/8-18 unf

@ Indicates torque value (dry threads). Tighten multiple bolts, capscrews & hex nuts in a criss-cross or alternating pattern. Bring each fastener to the recommended torque specification in even increments.

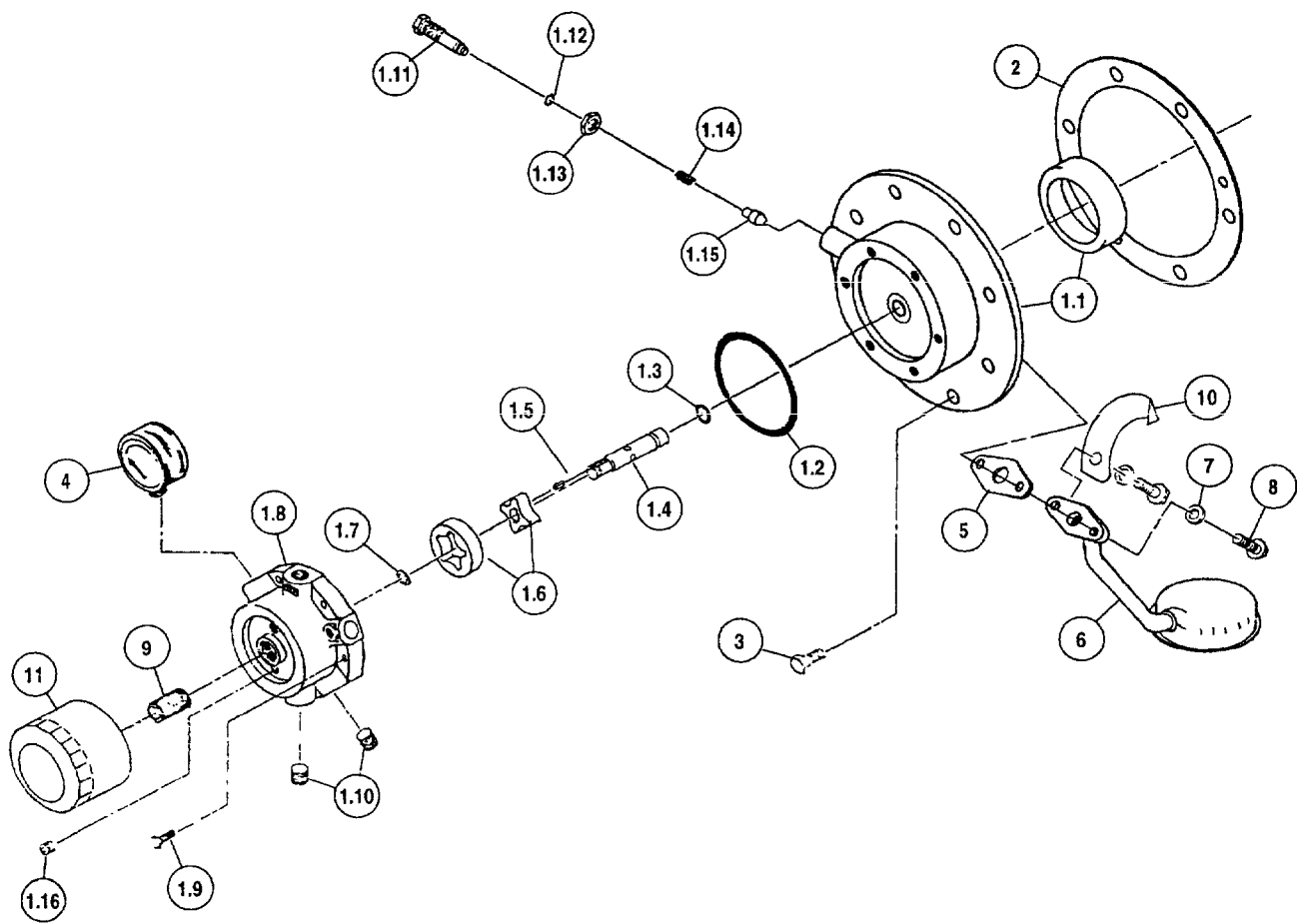
N.S.S. = Not Sold Separate

Note: For reversal of compressor rotation refer to QR-25 instruction manual.



BEARING CARRIER GROUP 110818-005

(with oil filter)



BEARING CARRIER GROUP 110818-005

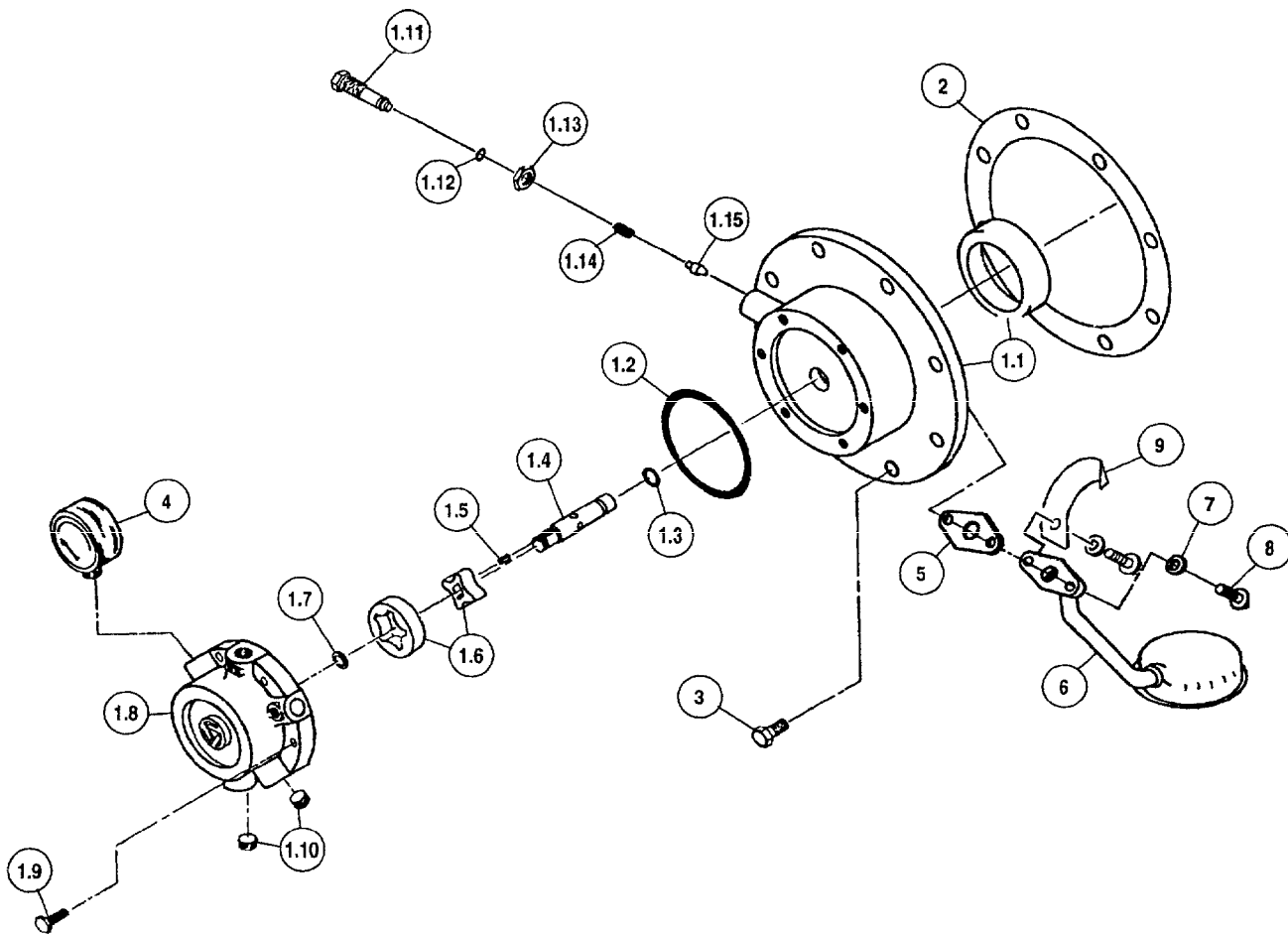
(with oil filter)

Item Number	Qty.	Part Number	Description
* 1	1	110811-003	bearing carrier assembly
1.1	1	110811	bearing carrier
	1	3720	bearing cup
	2	160005	bushing
* 1.2	1	123157-152	"o"ring, 3/32 wide x 3.44 o.d.
* 1.3	1	123157-112	"o"ring, 3/32 wide x .69 o.d.
1.4	1	160002-001	bearing carrier driveshaft
1.5	1	160075-001	driveshaft key
1.6	1	160003	pump gerotor
1.7	1	6285	retaining ring
1.8	1	110813-001	oil pump housing
1.9	6	123777-J12	hex. screw, 1/4-20 unc x 1.00, grade 5 (@ 6 ft.-lbs.)
1.10	2	2719	pipe plug, 1/4 npt, hex socket
1.11	1	5489	adjustment screw
* 1.12	1	123157-011	"o"ring, 1/16 wide x .44 o.d.
1.13	1	124369-P02	jamnut, 9/16-18 unf
1.14	1	1160	spring
1.15	1	112857	needle valve
1.16	1	121160	pipe plug, 1/8 npt
2	1	5494	gasket, bearing carrier
3	8	123478-N14	hex. screw, 1/2-13 unc x 1.25, grade 5 (@ 75 ft.-lbs.)
4	1	110822	oil pressure gauge
5	1	6679	gasket
6	1	110660	oil pickup tube
7	2	123115-06C	lockwasher, 3/8
8	2	123478-L11	hex. screw, 3/8-16 unc x .88, grade 5 (@ 25 ft.-lbs.)
9	1	110825	stud
10	1	113159	oil deflector
Maintenance Parts			
* 11	1	110814-001	6 pack of oil filters
		* 160079	Oil Pump Repair Kit
			includes "o"rings, driveshaft, key, pump gerotor, & retaining ring
		* 110811X003	Replacement Bearing Carrier Assembly
			includes bearing carrier assembly, oil filter, stud, & bearing carrier gaskets

@ Indicates torque value (dry threads). Tighten multiple bolts, capscrews & hex nuts in a criss-cross or alternating pattern. Bring each fastener to the recommended torque specification in even increments.

* Can not be used with diester or phosphate ester synthetic lubricants.

(less oil filter)



BEARING CARRIER GROUP 110818-006

(less oil filter)

Item Number	Qty.	Part Number	Description
1	1	110811-002	bearing carrier assembly
1.1	1	110811	bearing carrier
	1	3720	bearing cup
	2	160005	bushing
*	1.2	123157-152	"o"ring, 3/32 wide x 3.44 o.d.
*	1.3	123157-112	"o"ring, 3/32 wide x .69 o.d.
	1.4	160002-001	bearing carrier driveshaft
	1.5	160075-001	driveshaft key
	1.6	160003	pump gerotor
	1.7	6285	retaining ring
	1.8	110813	housing
	1.9	123777-J12	hex. screw, 1/4-20 unc x 1.00, grade 5 (@ 6 ft.-lbs.)
	1.10	2719	pipe plug, 1/4 npt, hex socket
	1.11	5489	adjustment screw
*	1.12	123157-011	"o"ring, 1/16 wide x .44 o.d.
	1.13	124369-P02	jamnut, 9/16-18 unf
	1.14	1160	spring
	1.15	112857	needle valve
2	1	5494	gasket, bearing carrier
3	8	123478-N14	hex. screw, 1/2-13 unc x 1.25, grade 5 (@ 75 ft.-lbs.)
4	1	110822	oil pressure gauge
5	1	6679	gasket
6	1	110660	oil pickup tube
7	2	123115-06C	lockwasher, 3/8
8	2	123478-L11	hex. screw, 3/8-16 unc x .88, grade 5 (@ 25 ft.-lbs.)
9	1	113159	oil deflector

Maintenance Parts

*	160079	Oil Pump Repair Kit includes "o"rings, driveshaft, key, pump gerotor, & retaining ring
	110811X002	Replacement Bearing Carrier Assembly includes bearing carrier assy., bearing carrier gasket, & oil inlet bracket gasket

Parts for use with diester or phosphate ester synthetic based lubricants

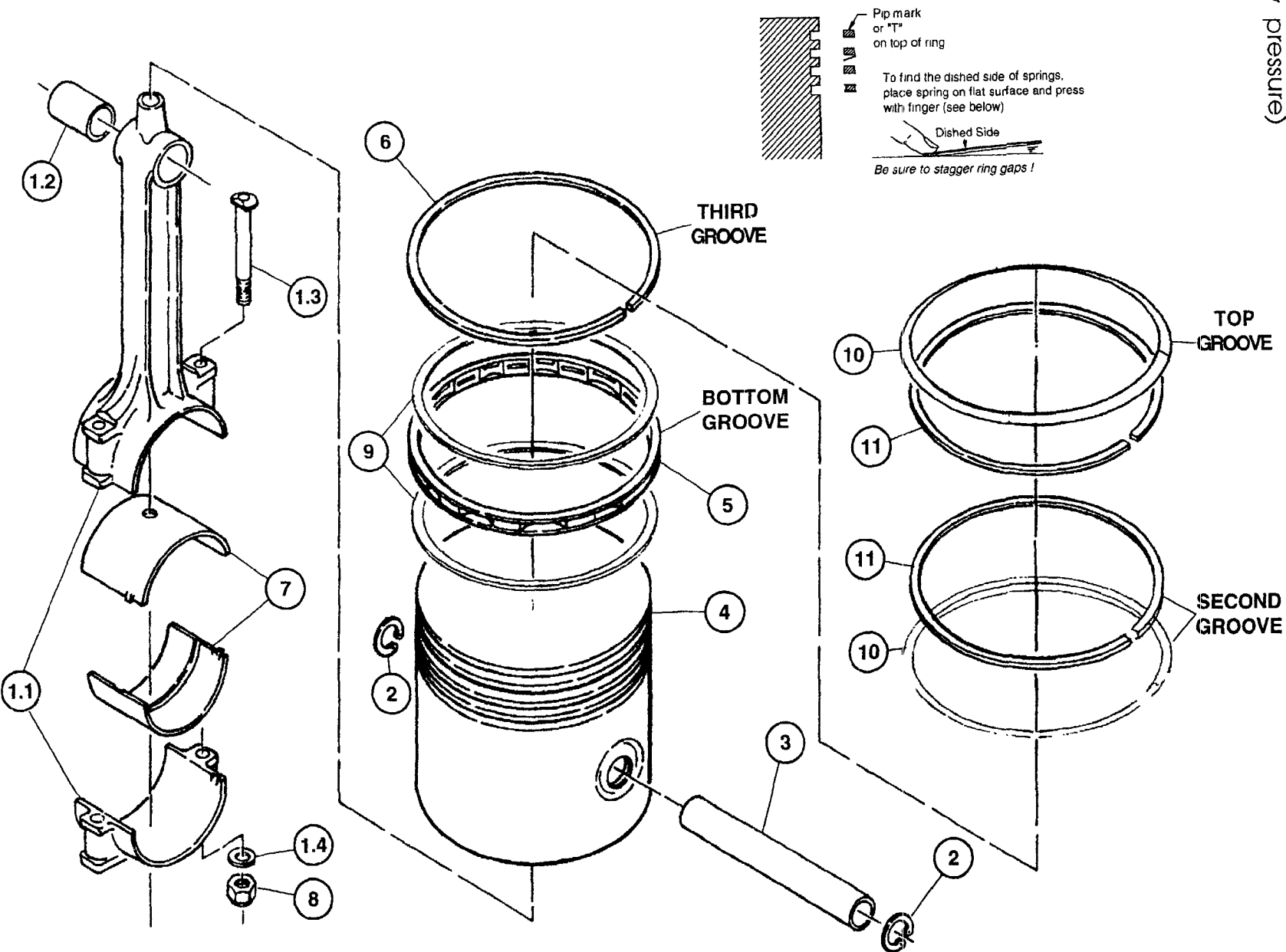
1.2	1	22749-152	"o"ring, 3/32 wide x 3.44 o.d.
1.3	1	22749-112	"o"ring, 3/32 wide x .69 o.d.
1.12	1	22749-011	"o"ring, 1/16 wide x .44 o.d.
		160079-001	Oil Pump Repair Kit includes "o"rings, driveshaft, key, pump gerotor, & retaining ring

@ Indicates torque value (dry threads). Tighten multiple bolts, capscrews & hex nuts in a criss-cross or alternating pattern. Bring each fastener to the recommended torque specification in even increments.

* Can not be used with diester or phosphate ester synthetic lubricants.

CONNECTING ROD & PISTON GROUP 110462

(low pressure)



CONNECTING ROD & PISTON GROUP 110462

(low pressure)

Item Number	Qty.	Part Number	Description
1	1	40081	connecting rod assembly (N.S.S.; order 6655X)
1.1	1	110803	connecting rod (N.S.S.; order 6655X)
1.2	1	6443	bushing, connecting rod (N.S.S.; order 6443SR)
1.3	2	1344	connecting rod bolt, 7/16-20 unc x 3.25
1.4	2	1319	connecting rod bolt washer
2	2	8648	retaining ring
3	1	8647	piston pin
4	1	8640	piston, LP
5	1	112749	ring spacer
6	1	9146	piston ring
7	2	6656	connecting rod insert (sold in pairs only; see maintenance parts)
8	2	124471-M08	locknut, 7/16-20 unf (@ 40 ft.-lbs.)
9	2	112748	oil ring rail
10	2	6994	spring
11	2	6992	piston ring
Maintenance Parts			
7	1	6656PR	connecting rod inserts (1 pair, standard size)
* 7	1	6656-010PR	connecting rod inserts (1 pair, .010 undersize)
* 4	1	8640-010	piston, LP (.010 oversize)
4	1	8640-020	piston, LP (.020 oversize)
	1	7527	Piston Ring Set, LP
			includes piston rings, piston rails, piston spring, & spacer
	1	5787-010	Piston Ring Set, LP
			includes all rings necessary for installing .010 oversize piston
	1	5787-020	Piston Ring Set, LP
			includes all rings necessary for installing .020 oversize piston
		8640X	Piston Assembly, LP (Standard)
			includes ring set, piston, piston pin, & retaining ring
		8640X010	Piston Assembly, LP (.010 Oversize)
			includes ring set, piston, piston pin, & retaining rings
		8640X020	Piston Assembly, LP (.020 Oversize)
			includes ring set, piston, piston pin, & retaining rings
		6655X	Replacement Connecting Rod Assembly (Standard)
			includes connecting rod assembly, connecting rod inserts, & locknuts
		6655XUS	Replacement Connecting Rod Assembly (.010 Undersize)
			includes connecting rod assembly, connecting rod inserts, & locknuts

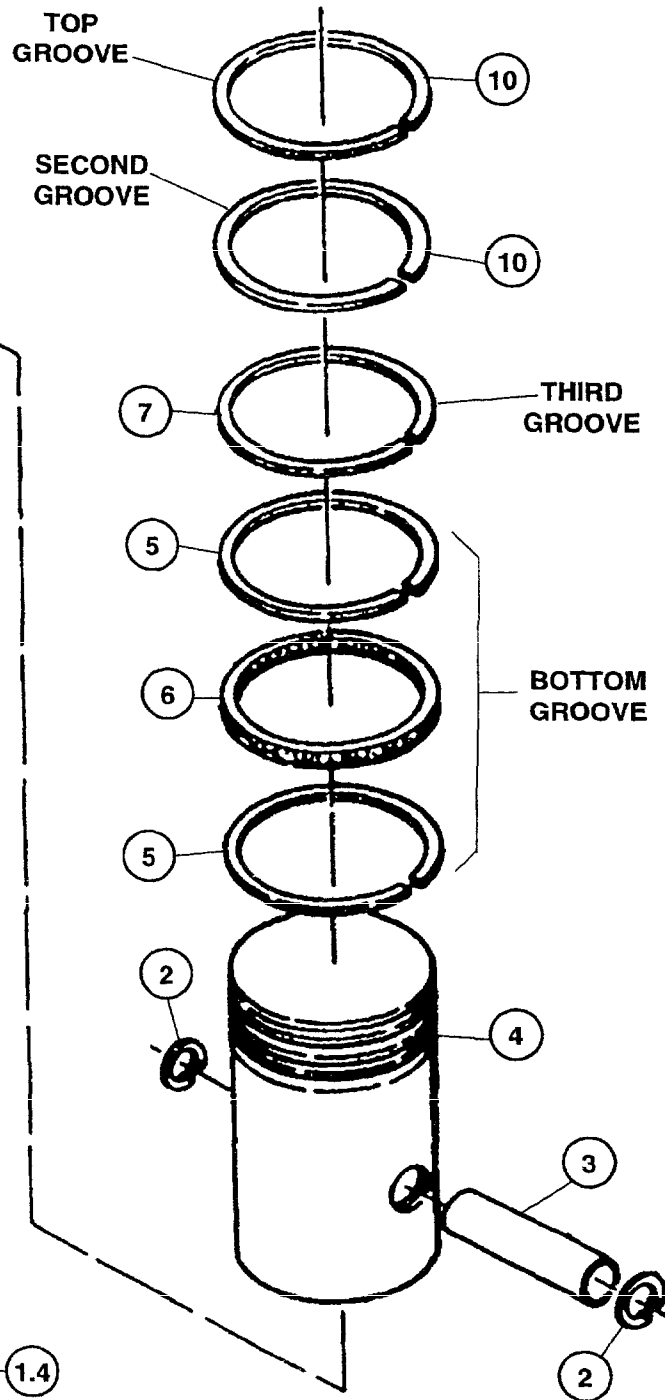
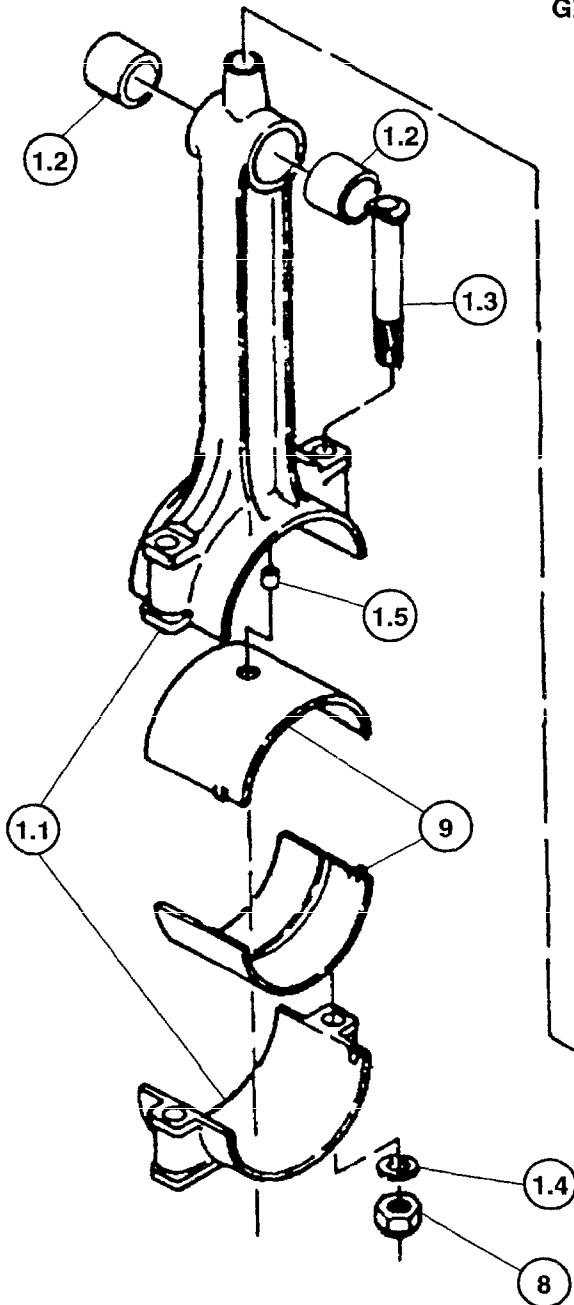
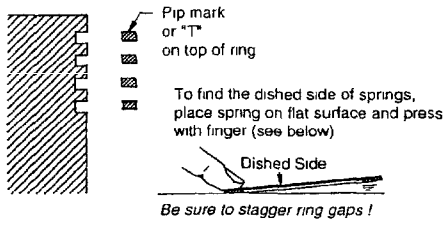
@ Indicates torque value (dry threads). Tighten multiple bolts, capscrews & hex nuts in a criss-cross or alternating pattern. Bring each fastener to the recommended torque specification in even increments.

* One pair required for each connecting rod assembly.

N.S.S. = Not Sold Separate

CONNECTING ROD & PISTON GROUP 110463

(high pressure)



CONNECTING ROD & PISTON GROUP 110463

(high pressure)

Item Number	Qty.	Part Number	Description
1	1	110804	connecting rod assembly (N.S.S.; order 110804X)
1.1	1	110802	connecting rod (N.S.S.; order 110804X)
1.2	2	110799-010	needle bearing
1.3	2	1344	connecting rod bolt, 7/16-20 unc x 3.25
1.4	2	1319	connecting rod bolt washer
1.5	1	110801-001	pipe plug orifice
2	2	8648	retaining ring
3	1	110190-004	piston pin
4	1	5846-001	piston, HP
5	2	112782	oil ring rail
6	1	112783	ring spacer
7	1	6997	piston ring
8	2	124471-M08	locknut, 7/16-20 unf (@ 40 ft.-lbs.)
9	2	6656	connecting rod insert (sold in pairs only; see maintenance parts)
10	2	111845	piston ring
Maintenance Parts			
* 9	1	6656PR	connecting rod inserts (1 pair, standard size)
* 9	1	6656-010PR	connecting rod inserts (1 pair, .010 undersize)
4	1	5846-011	piston, hp (.010 oversize)
4	1	5846-021	piston, hp (.020 oversize)
		8168A	Piston Ring Set, HP (Standard) No Color Code includes piston rings, piston rails, piston spring, & spacer
		5788-010	Piston Ring Set, HP (.010 Oversize) (L. Blue) includes all rings necessary for installing .010 oversize piston
		5788-020	Piston Ring Set, HP (.020 Oversize) (Yellow) includes all rings necessary for installing .020 oversize piston
		5846X001	Piston Assembly, HP (Standard) includes ring set, piston, piston pin, & retaining ring
		5846X011	Piston Assembly, HP (.010 Oversize) includes ring set, piston, piston pin, & retaining ring
		5846X021	Piston Assembly, HP (.020 Oversize) includes ring set, piston, piston pin, & retaining ring
		110804X	Replacement Connecting Rod Assembly (Standard) includes connecting rod assembly, connecting rod inserts, & locknuts
		110804X010	Replacement Connecting Rod Assembly (.010 Undersize) includes connecting rod assembly, connecting rod inserts, & locknuts

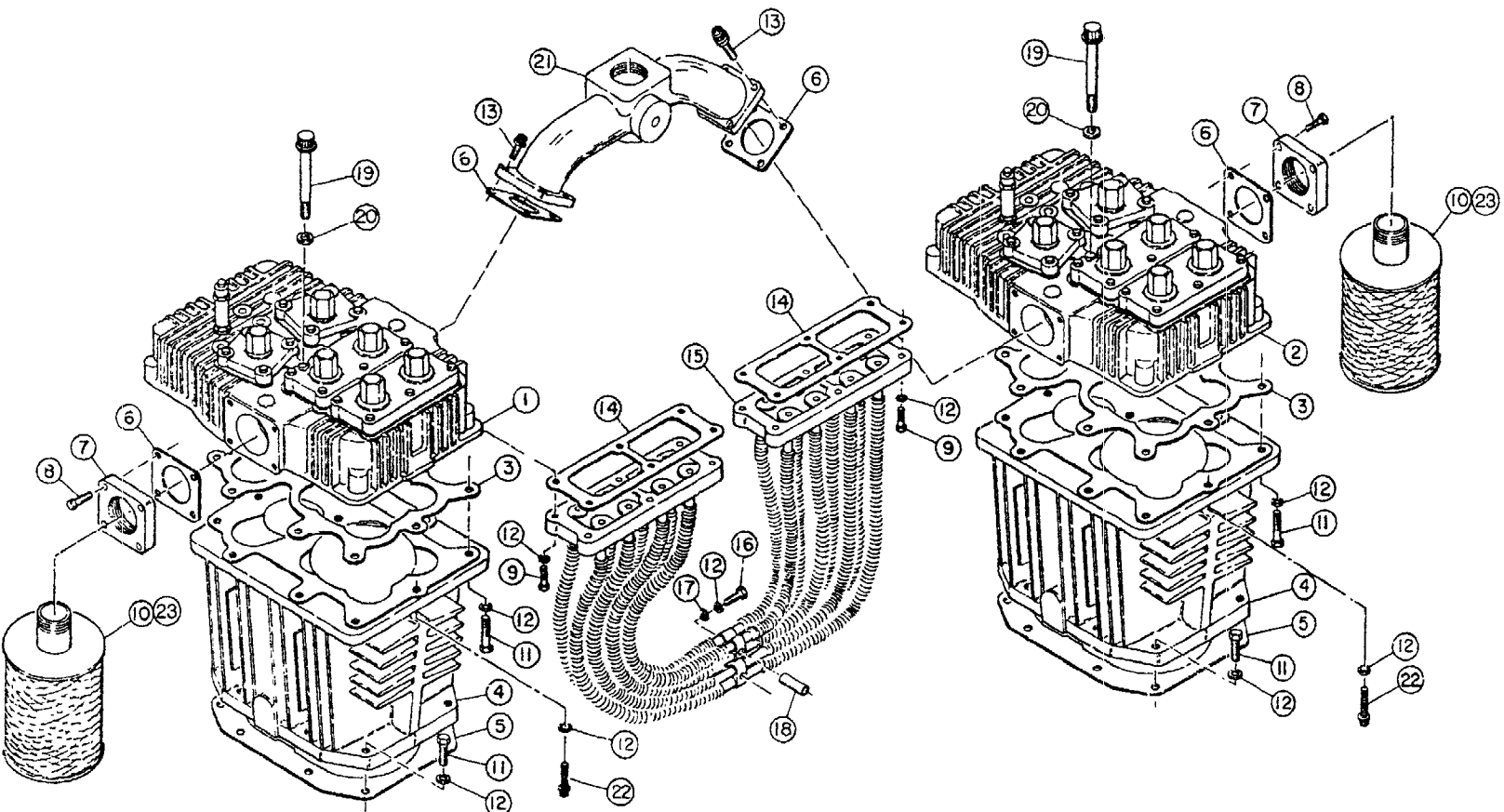
@ Indicates torque value (dry threads). Tighten multiple bolts, capscrews & hex nuts in a criss-cross or alternating pattern. Bring each fastener to the recommended torque specification in even increments.

* One pair required for each connecting rod assembly.

N.S.S. = Not Sold Separate

CYLINDER & HEAD GROUP 110464

(control version P)



CYLINDER & HEAD GROUP 110464

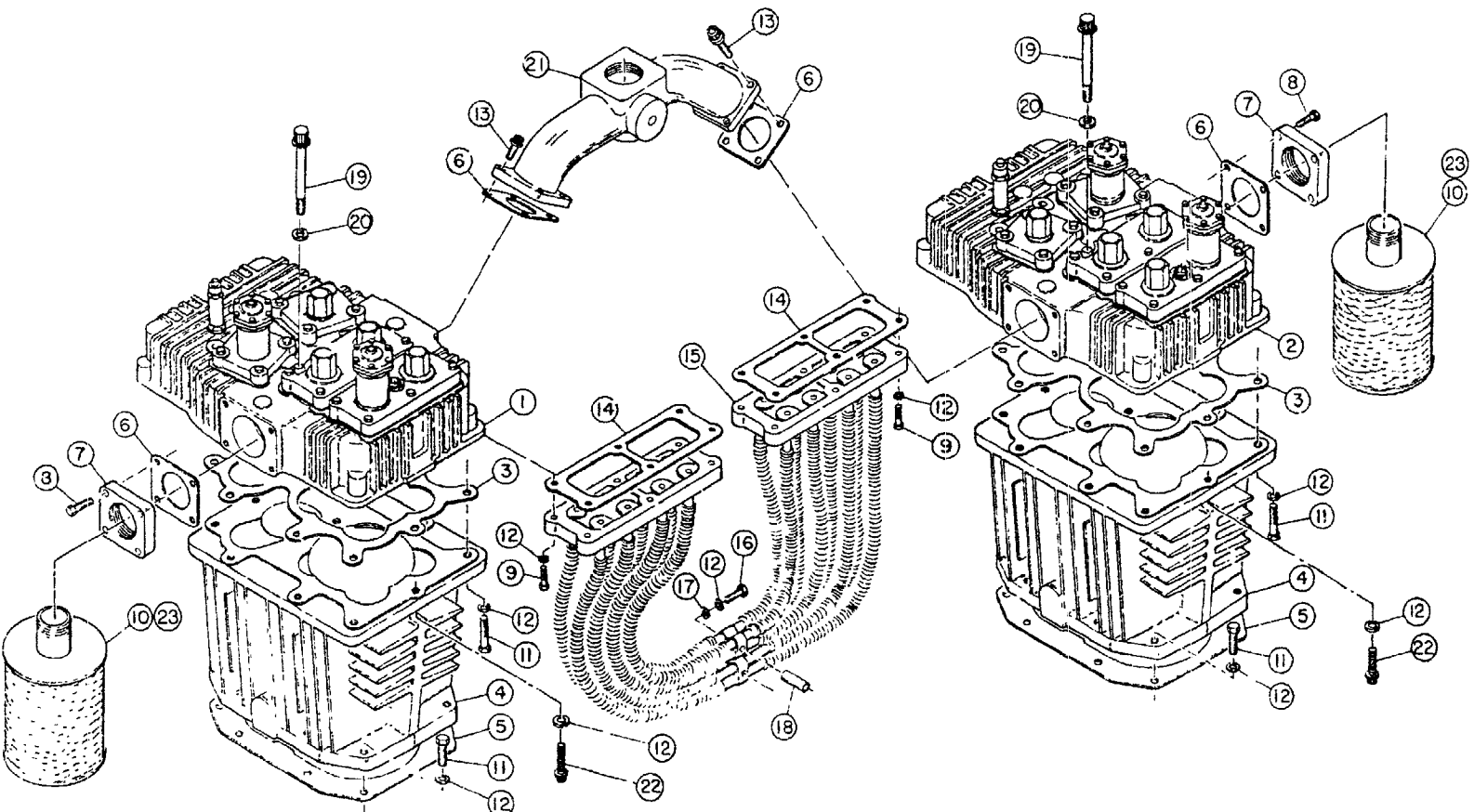
(control version P)

Item Number	Qty.	Part Number	Description
1	1	7382P	head assembly
2	1	7383P	head assembly
3	2	7403	gasket, cylinder to head
4	2	7396-1	cylinder
5	2	5827	gasket, cylinder to crankcase
6	4	5828	gasket, companion flange
7	2	5858	intake flange
8	8	123478-M15	hex. screw, 7/16-14 unc x 1.50, grade 5
9	10	123478-N16	hex. screw, 1/2-13 unc x 1.75, grade 5
10	2	110377F200	air filter
	or		
10	2	110377H200	hooded air filter
	or		
10	2	110377S200	hooded air filter silencer
11	28	123478-N15	hex screw, 1/2-13 unc x 1.50, grade 5
12	42	123115-08C	lockwasher, 1/2
13	8	90386-M14	counterbore screw, 7/16-14 unc x 1.25, grade 8 (@ 50 ft.-lbs.)
14	2	5860	gasket, intercooler to head
15	1	6658	intercooler
16	2	123478-N25	hex. screw, 1/2-13 unc x 4.00, grade 5 (@ 75 ft.-lbs.)
17	2	110428W050	flatwasher-1/2
18	2	6959	intercooler sleeve
19	12	5863	counterbore screw, 1/2-13 unc x 4.25, grade 8
20	12	1478-1	flatwasher
21	1	7445-002	discharge manifold
22	2	90386-N14	counterbore screw, 1/2-13 unc x 1 25, grade 8 (@ 50 ft.-lbs.)
Maintenance Parts			
23	2	110377E200	air filter element
	1	7382X3P	Replacement Head Assembly includes head assembly & gaskets
	1	7383X3P	Replacement Head Assembly includes head assembly & gasket

@ Indicates torque value (dry threads). Tighten multiple bolts, capscrews & hex nuts in a criss-cross or alternating pattern. Bring each fastener to the recommended torque specification in even increments.

CYLINDER & HEAD GROUP 110465-001

(control versions L, S, LS, & LVD)



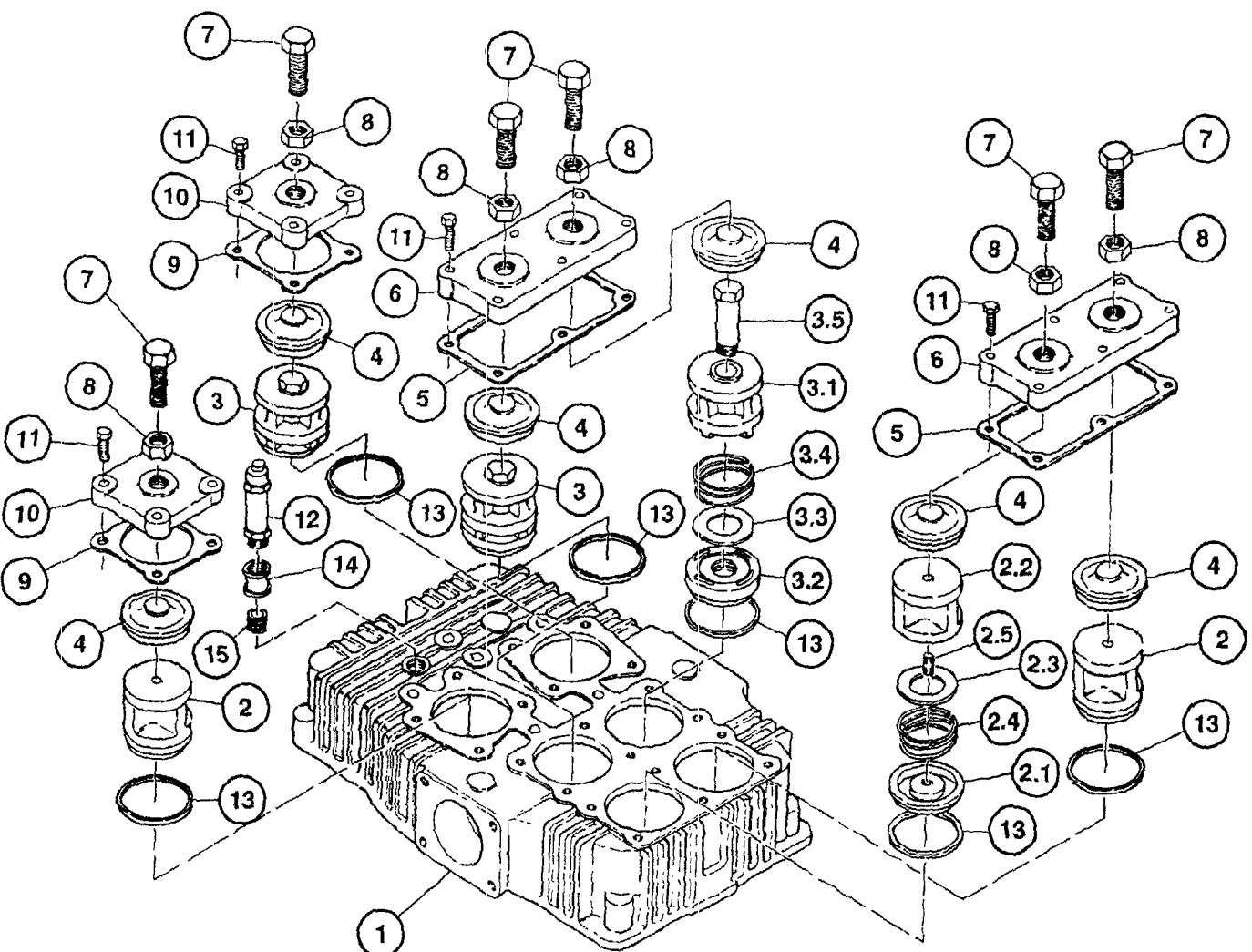
CYLINDER & HEAD GROUP 110465-001

(control versions L, S, LS, & LVD)

Item Number	Qty.	Part Number	Description
1	1	7382UU	head assembly (see pages 21 & 23 for parts breakdown)
2	1	7383UU	head assembly (see pages 25 & 27 for parts breakdown)
3	2	7403	gasket, cylinder to head
4	2	7396-1	cylinder
5	2	5827	gasket, cylinder to crankcase
6	4	5828	gasket, companion flange
7	2	5858	intake flange
8	8	123478-M15	hex. screw, 7/16-14 unc x 1.50, grade 5 (@ 50 ft.-lbs.)
9	10	123478-N16	hex. screw, 1/2-13 unc x 1.75, grade 5 (@ 65 ft.-lbs.)
10	2	110377F200	air filter
	or		
10	2	110377H200	hooded air filter
	or		
10	2	110377S200	hooded air filter silencer
11	28	123478-N15	hex. screw, 1/2-13 unc x 1.50, grade 5 (@ 75 ft.-lbs.)
12	42	123115-08C	lockwasher, 1/2
13	8	90386-M14	counterbore screw, 7/16-14 unc x 1.25, grade 8 (@ 50 ft.-lbs.)
14	2	5860	gasket, intercooler to head
15	1	6658	intercooler
16	2	123478-N25	hex. screw, 1/2-13 unc x 4.00, grade 5 (@ 75 ft.-lbs.)
17	2	110428W050	flatwasher-1/2
18	2	6959	intercooler sleeve
19	12	5863	counterbore screw, 1/2-13 unc x 4.25, grade 8 (@ 65 ft.-lbs.)
20	12	1478-1	flatwasher
21	1	7445-002	discharge manifold
22	2	90386-N14	counterbore screw, 1/2-13 unc x 1.25, grade 8 (@ 50 ft.-lbs.)
Maintenance Parts			
23	2	110377E200	air filter element
	1	7382X3L	Replacement Head Assembly
			includes head assembly & gaskets
	1	7383X3L	Replacement Head Assembly
			includes head assy., gasket, fittings, & copper tubes

@ Indicates torque value (dry threads). Tighten multiple bolts, capscrews & hex nuts in a criss-cross or alternating pattern. Bring each fastener to the recommended torque specification in even increments.

LEFT HEAD ASSEMBLY 7382P (control version P)



* LEFT HEAD ASSEMBLY 7382P

(control version P)

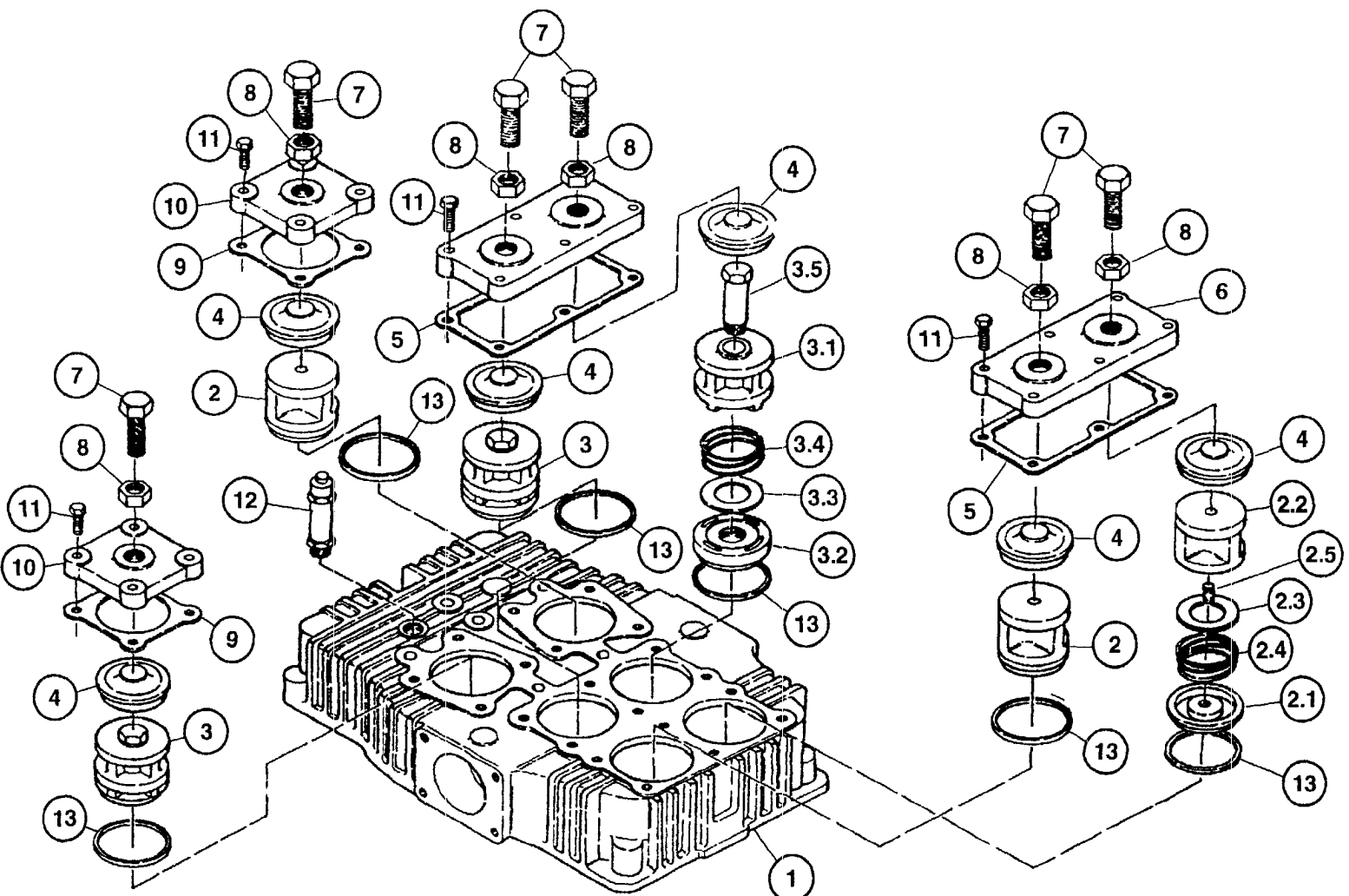
Item Number	Qty.	Part Number	Description
* 1	1	7382	head
2	3	6671X1	suction valve assembly
* 2.1	1	6671	valve bumper
2.2	1	2015	valve seat
2.3	1	2036	valve disc
2.4	1	6909	valve spring
2.5	1	1849	stud
3	3	6670X1	discharge valve assembly
3.1	1	6670	valve bumper
3.2	1	5812	valve seat
3.3	1	2036	valve disc
3.4	1	6909	valve spring
3.5	1	5731	stud
4	6	6668-1R	valve retainer
5	2	7398	valve cover gasket
6	2	7384	cover plate
‡ 7	6	124571-R15	hex. screw, 3/4-16 unf x 1.50, grade 5 (@ 60 ft.-lbs.)
8	6	124369-R02	jamnut, 3/4-16 unf (@ 50 ft.-lbs.)
9	2	2025	valve cover gasket
10	2	6666	cover plate
‡ 11	20	7480	hex. screw, 7/16-14 unc x 1.38, grade 5 (@ 50 ft.-lbs.)
12	1	2961-100	pressure relief valve
13	6	2024	valve gasket
Maintenance Parts			
	3	6671X	Replacement Suction Valve Assembly includes suction valve assembly & valve gasket
	3	6670X	Replacement Discharge Valve Assembly includes discharge valve assembly & valve gasket

* As viewed facing the compressor from the bearing carrier side.

‡ Tighten & torque valve cover plate screws (item 11) before tightening valve clamp screws (item 7).

@ Indicates torque value (dry threads). Tighten multiple bolts, capscrews & hex nuts in a criss-cross or alternating pattern. Bring each fastener to the recommended torque specification in even increments.

RIGHT HEAD ASSEMBLY 7383P (control version P)



* RIGHT HEAD ASSEMBLY 7383P

(control version P)

Item Number	Qty.	Part Number	Description
1	1	7383	head
2	3	6671X1	suction valve assembly
2.1	1	6671	valve bumper
2.2	1	2015	valve seat
2.3	1	2036	valve disc
2.4	1	6909	valve spring
2.5	1	1849	stud
3	3	6670X1	discharge valve assembly
3.1	1	6670	valve bumper
3.2	1	5812	valve seat
3.3	1	2036	valve disc
3.4	1	6909	valve spring
3.5	1	5731	stud
4	6	6668-1R	valve retainer
5	2	7398	valve cover gasket
6	2	7384	cover plate
‡ 7	6	124571-R15	hex screw, 3/4-16 unf x 1.50, grade 5 (@ 60 ft.-lbs.)
8	6	124369-R02	jamnut, 3/4-16 unf (@ 50 ft.-lbs.)
9	2	2025	valve cover gasket
10	2	6666	cover plate
‡ 11	20	7480	hex. screw, 7/16-14 unc x 1.38, grade 5 (@ 50 ft.-lbs.)
12	1	2961-100	pressure relief valve
13	6	2024	valve gasket
Maintenance Parts			
	3	6671X	Replacement Suction Valve Assembly includes suction valve assembly & valve gasket
	3	6670X	Replacement Discharge Valve Assembly includes discharge valve assembly & valve gasket

* As viewed facing the compressor from the bearing carrier side.

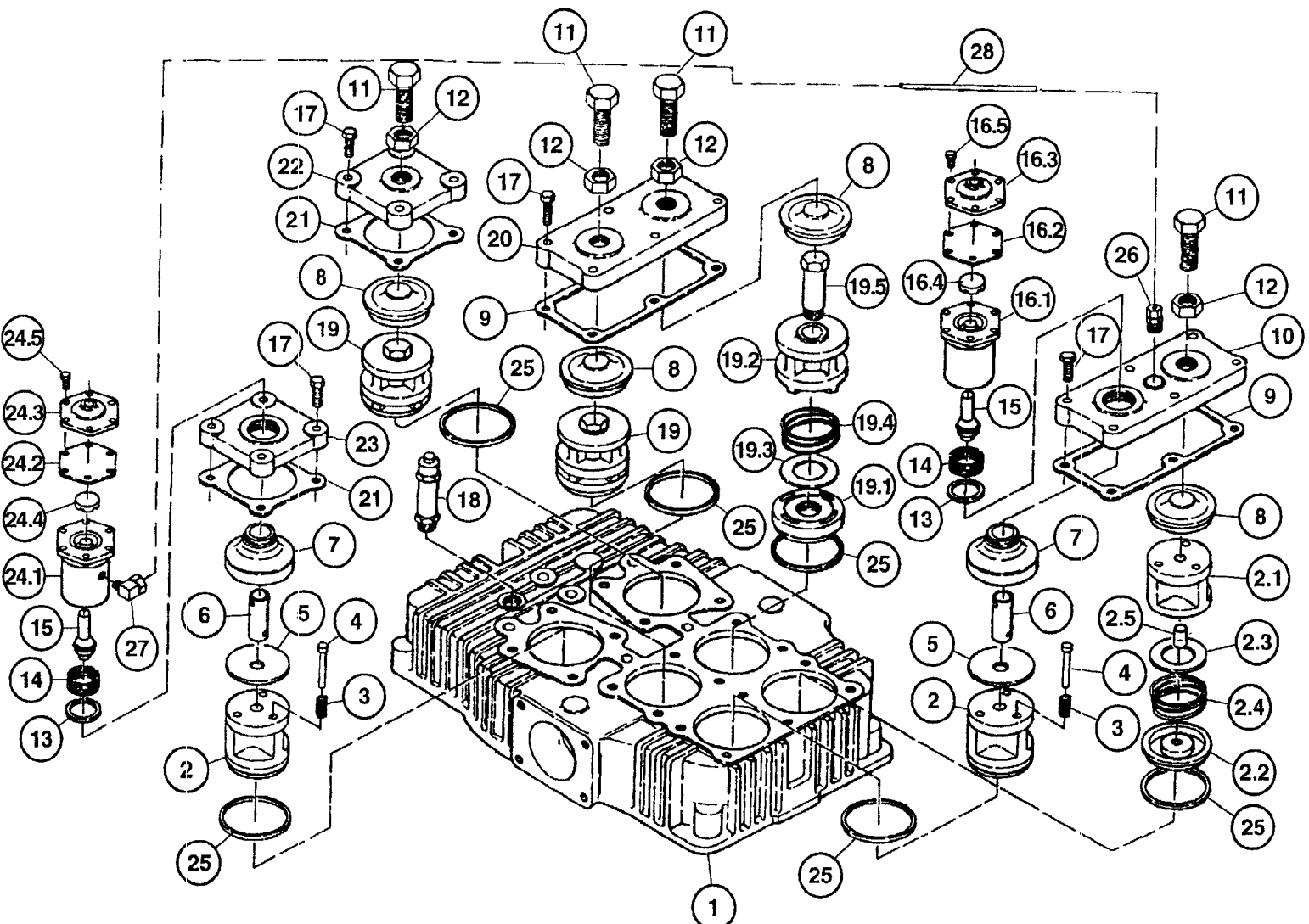
‡ Tighten and torque valve cover plate screws (item 11) before tightening valve clamp screws (item 7).

@ Indicates torque value (dry threads). Tighten multiple bolts, capscrews & hex nuts in a criss-cross or alternating pattern. Bring each fastener to the recommended torque specification in even increments.

N.S.S. = Not Sold Separate

LEFT HEAD ASSEMBLY 7382UU

(control versions L, S, LS, & LVD)



* LEFT HEAD ASSEMBLY 7382UU

(control versions L, S, LS, & LVD)

Item Number	Qty.	Part Number	Description
1	1	7382	head
2	3	6671X1	suction valve assembly
2.1	1	6671	valve bumper
2.2	1	2015	suction valve seat
2.3	1	2036	valve disc
2.4	1	6909	valve spring
2.5	1	1849	stud
3	6	6910	valve spring
4	6	1857	valve pin
5	2	5729	valve platform
6	2	6912-001	unloader pin
7	2	6911	valve retainer
8	4	6668-1R	valve retainer
9	2	7398	valve cover gasket
10	1	7385	valve cover plate
11	4	124571-R15	hex. screw, 3/4-16 unf x 1.50, grade 5 (@ 60 ft.-lbs.)
12	4	124369-R02	jamnut, 3/4-16 unf (@ 50 ft.-lbs.)
13	2	1556	gasket, valve
14	2	3008	holddown screw/ (@ 60 ft.-lbs.)
15	2	7532X	unloader piston assembly
16	1	40192	unloader assembly (@ 75 ft.-lbs.), (N.S.S.; order 8272X)
16.1	1	8272	unloader body
16.2	1	1855	diaphragm
16.3	1	1818B	diaphragm cover plate
16.4	1	5910	diaphragm disc
16.5	6	7499	hex. screw, 1/4-20 unc x .75, grade 2 (@ 72 in.-lbs.)
17	20	7480	hex. screw, 7/16-14 unc x 1.38, grade 5 (@ 50 ft.-lbs.)
18	1	2961-100	pressure relief valve
19	3	6670X1	discharge valve assembly
19.1	1	6670	valve bumper
19.2	1	5812	valve seat
19.3	1	2036	valve disc
19.4	1	6909	valve spring
19.5	1	5731	stud
20	1	7384	cover plate
21	2	2025	valve cover gasket
22	1	6666	cover plate
23	1	6908	cover plate
24	1	40055	unloader assembly (@ 75 ft.-lbs.) (N.S.S.; order 7483X)
24.1	1	7483	unloader body
24.2	1	1855	diaphragm
24.3	1	1818B	diaphragm cover plate
24.4	1	5910	diaphragm disc
24.5	6	7499	hex. screw, 1/4-20 unc x .75, grade 2 (@ 72 in.-lbs.)
25	6	2024	valve gasket
26	1	110594-005	tube fitting, male connector, 1/4 tube x 1/4 npt
27	1	1642	tube fitting, 90° male elbow, 1/4 tube x 1/8 npt
28	2 ft.	110515-025	copper tube, 1/4 o.d.

continued on page 24

* As viewed facing the compressor from the bearing carrier side.

‡ Tighten and torque valve cover plate screws (item 17) before tightening valve clamp screws (item 11).

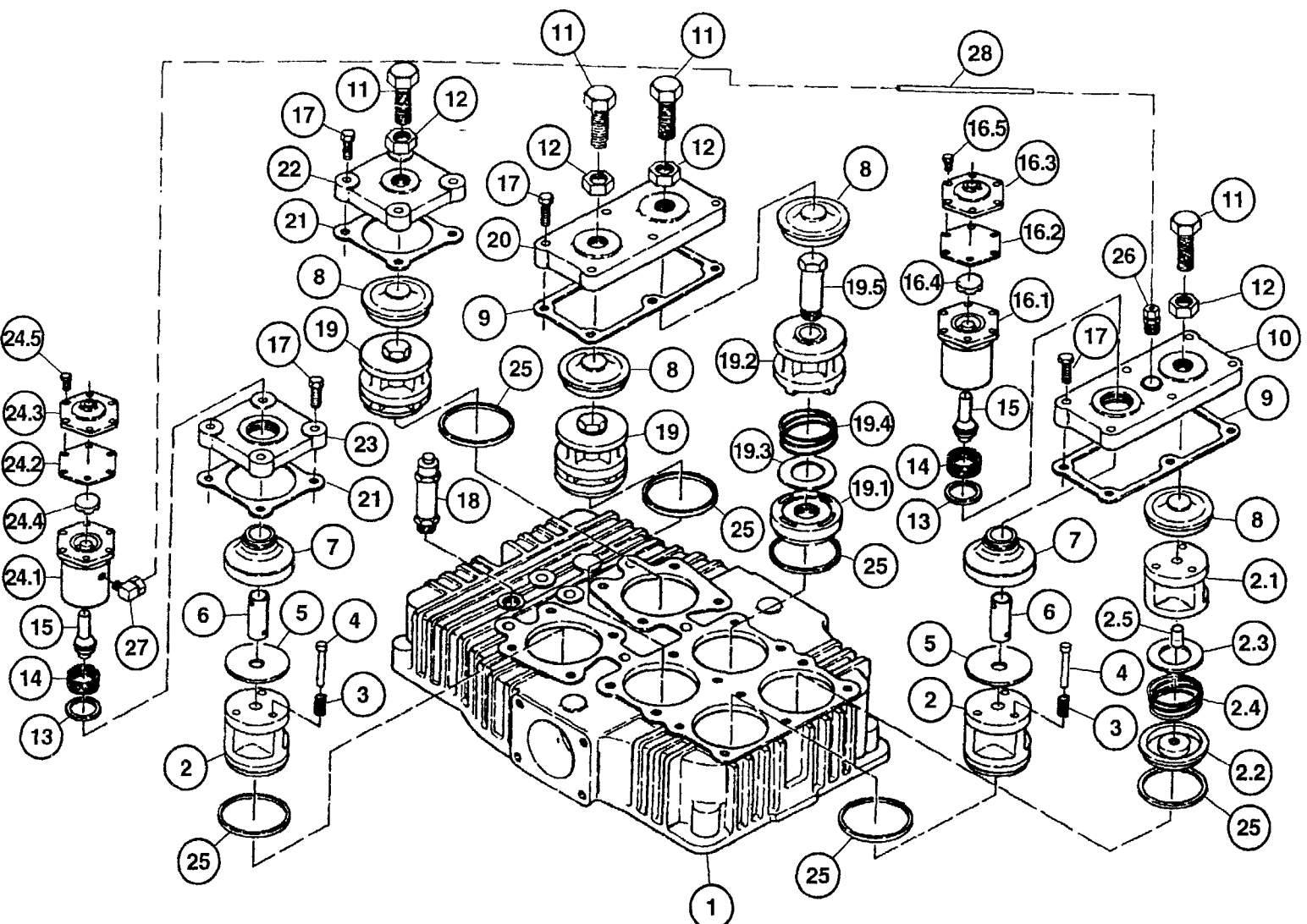
@ Indicates torque value (dry threads). Tighten multiple bolts, capscrews & hex nuts in a criss-cross or alternating pattern. Bring each fastener to the recommended torque specification in even increments.

N.S.S. = Not Sold Separate

LEFT HEAD ASSEMBLY 7382UU

(control versions L, S, LS, & LVD)

continued from page 21



* LEFT HEAD ASSEMBLY 7382UU

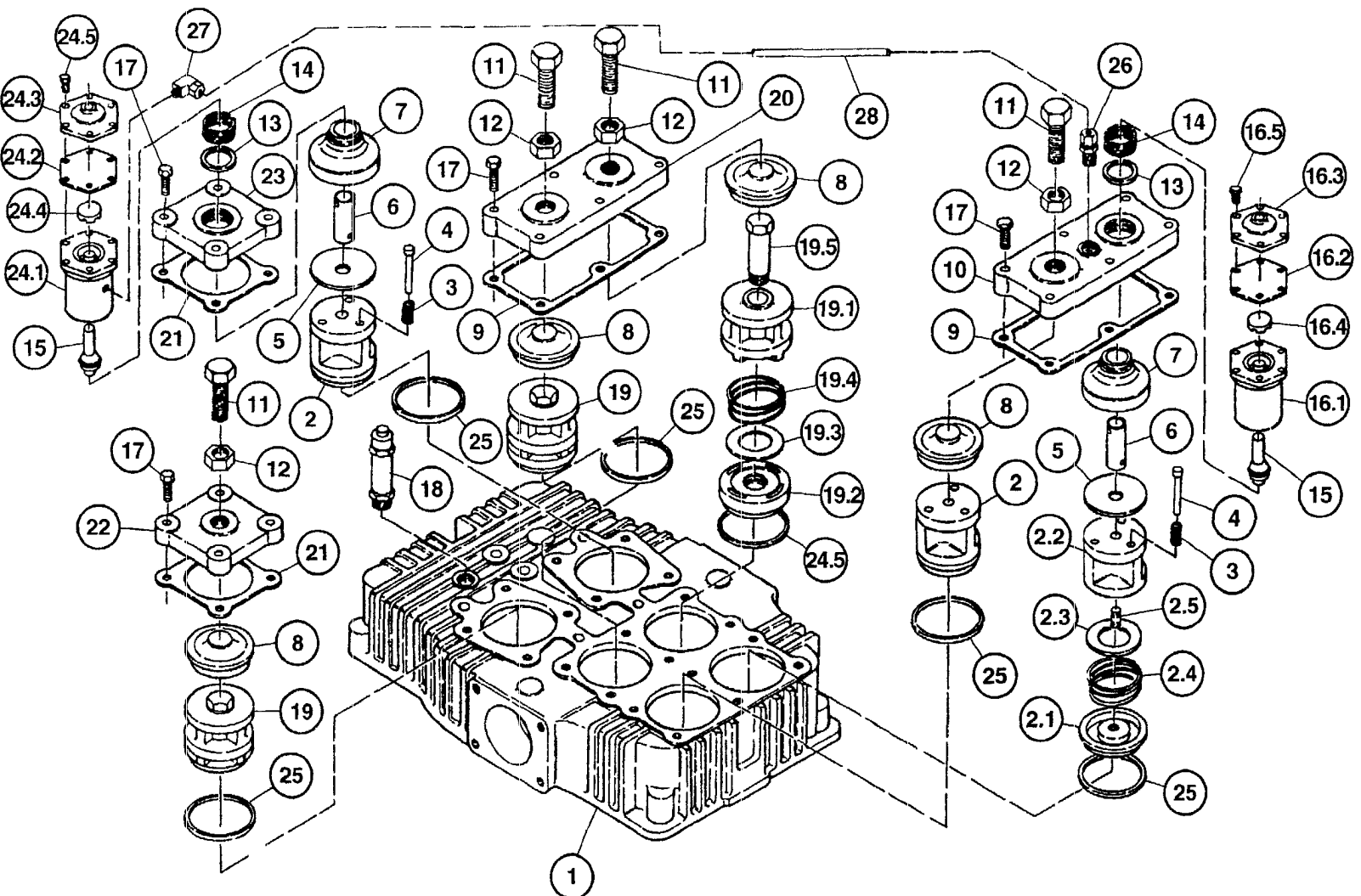
(control versions L, S, LS, & LVD)

continued from page 22

Item Number	Qty.	Part Number	Description
Parts for use with diester or phosphate ester synthetic based lubricants			
16.2	1	1855S	diaphragm
24.2	1	1855S	diaphragm
Maintenance Parts			
1	6671X	Replacement Suction Valve Assembly includes suction valve assembly & valve gasket	
2	6671XU	Replacement Suction Valve Assembly includes suction valve assembly, unloader pin springs, valve pins & valve gasket	
3	6670X	Replacement Discharge Valve Assembly includes discharge valve assembly & valve gasket	
1	7483X	Replacement Unloader Assembly includes unloader assembly, unloader piston assembly, valve gasket & pipe plug	
1	8272X	Replacement Unloader Assembly includes unloader piston assembly, unloader assembly, & valve gasket	

* As viewed facing the compressor from the bearing carrier side.

*** RIGHT HEAD ASSEMBLY 7383UU**
(control versions L, S, LS, & LVD)



* RIGHT HEAD ASSEMBLY 7383UU

(control versions L, S, LS, & LVD)

Item Number	Qty.	Part Number	Description
1	1	7383	head
2	3	6671X1	suction valve assembly
2.1	1	6671	valve bumper
2.2	1	2015	suction valve seat
2.3	1	2036	valve disc
2.4	1	6909	valve spring
2.5	1	1849	stud
3	6	6910	valve spring
4	6	1857	valve pin
5	2	5729	valve platform
6	2	6912-001	unloader pin
7	2	6911	valve retainer
8	4	6668-1R	valve retainer
9	2	7398	valve cover gasket
10	1	7385	valve cover plate
11	4	124571-R15	hex. screw, 3/4-16 unf x 1.50, grade 5 (@ 60 ft.-lbs.)
12	4	124369-R02	jamnut, 3/4-16 unf (@ 50 ft.-lbs.)
13	2	1556	gasket, valve
14	2	3008	holddown screw (@ 60 ft.-lbs.)
15	2	7532X	unloader piston assembly
16	1	40192	unloader assembly (@ 75 ft.-lbs.), (N.S.S.; order 8272X)
16.1	1	8272	unloader body
16.2	1	1855	diaphragm
16.3	1	1818B	diaphragm cover plate
16.4	1	5910	diaphragm disc
16.5	6	7499	hex. screw, 1/4-20 unc x .75, grade 2 (@ 72 in.-lbs.)
17	20	7480	hex. screw, 7/16-14 unc x 1.38, grade 5 (@ 50 ft.-lbs.)
18	1	2961-100	pressure relief valve
19	3	6670X1	discharge valve assembly
19.1	1	6670	valve bumper
19.2	1	5812	valve seat
19.3	1	2036	valve disc
19.4	1	6909	valve spring
19.5	1	5731	stud
20	1	7384	cover plate
21	2	2025	valve cover gasket
22	1	6666	cover plate
23	1	6908	cover plate
24	1	40055	unloader assembly (@ 75 ft.-lbs.) (N.S.S.; order 7483X)
24.1	1	7483	unloader body
24.2	1	1855	diaphragm
24.3	1	1818B	diaphragm cover plate
24.4	1	5910	diaphragm disc
24.5	6	7499	hex. screw, 1/4-20 unc x .75, grade 2 (@ 72 in.-lbs.)
25	6	2024	valve gasket
26	1	110594-005	tube fitting, male connector, 1/4 tube x 1/4 npt
27	1	1642	tube fitting, 90° male elbow, 1/4 tube x 1/8 npt
28	2 ft.	110515-025	copper tube, 1/4 o.d

continued on page 28

* As viewed facing the compressor from the bearing carrier side.

‡ Tighten and torque valve cover plate screws (item 17) before tightening valve clamp screws (item 11).

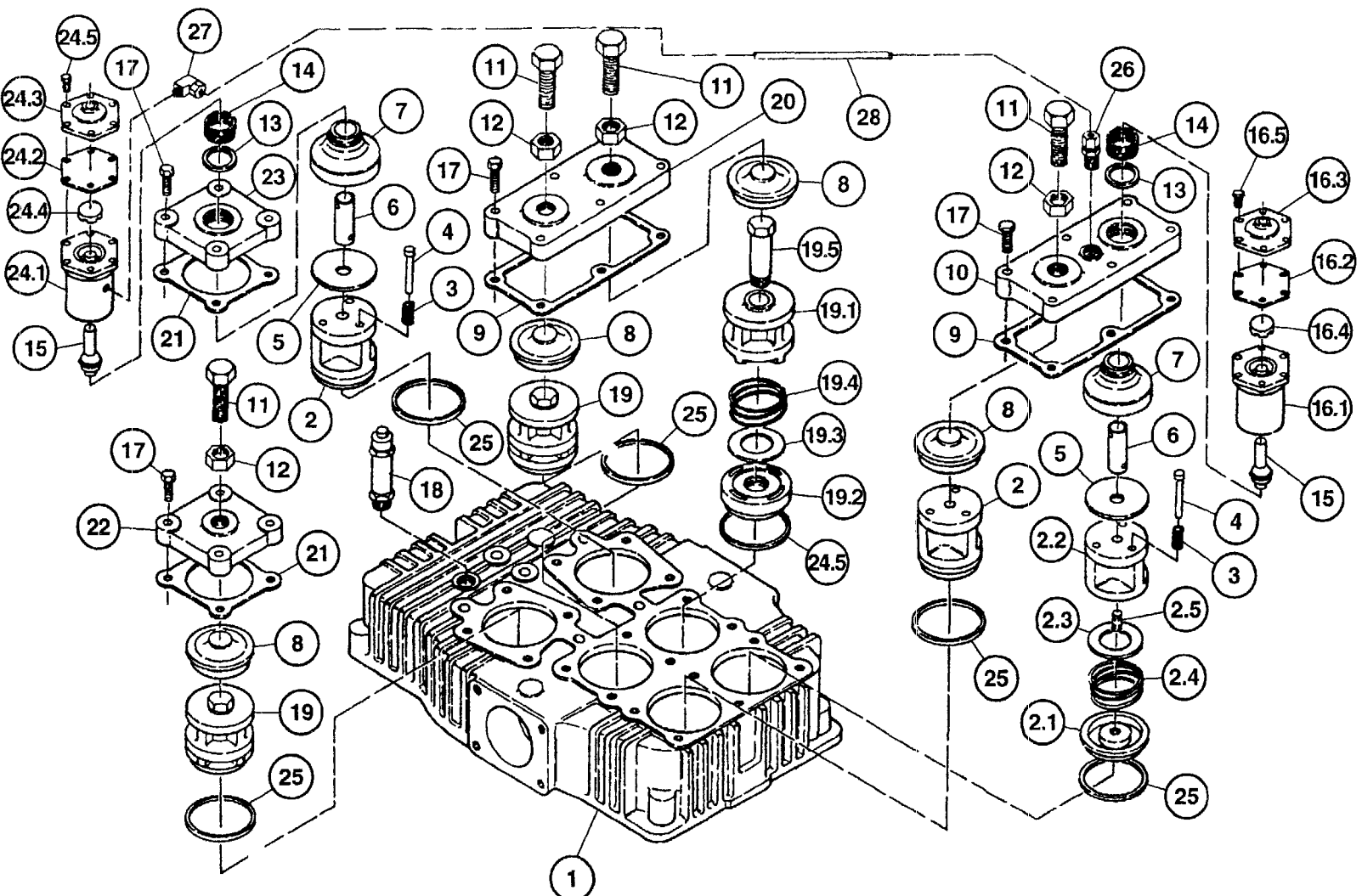
@ Indicates torque value (dry threads). Tighten multiple bolts, capscrews & hex nuts in a criss-cross or alternating pattern. Bring each fastener to the recommended torque specification in even increments.

N.S.S. = Not Sold Separate

RIGHT HEAD ASSEMBLY 7383UU

(control versions L, S, LS, & LVD)

continued from page 25



* RIGHT HEAD ASSEMBLY 7383UU

(control versions L, S, LS, & LVD)

continued from page 26

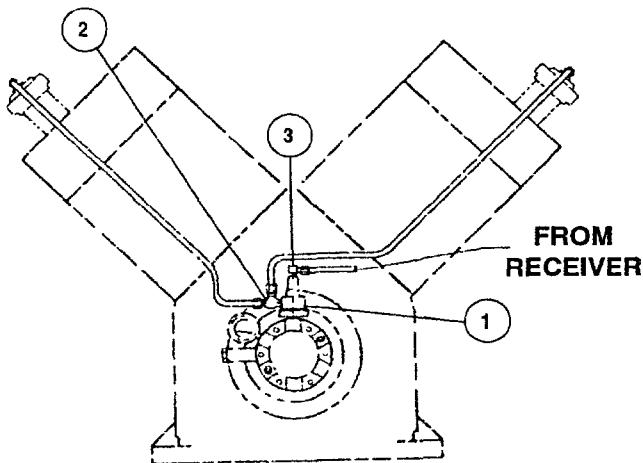
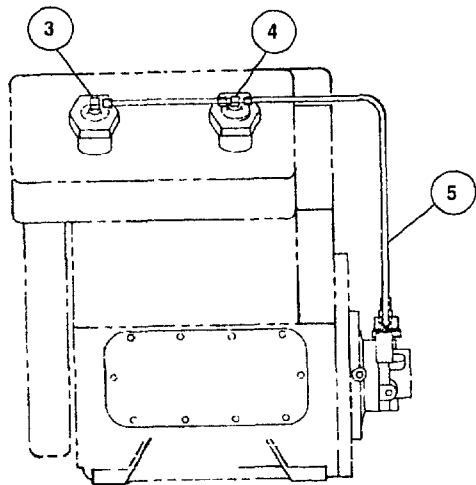
Item Number	Qty.	Part Number	Description
Parts for use with diester or phosphate ester synthetic based lubricants			
16.2	1	1855S	diaphragm
24.2	1	1855S	diaphragm
Maintenance Parts			
1	6671X	Replacement Suction Valve Assembly includes suction valve assembly & valve gasket	
2	6671XU	Replacement Suction Valve Assembly includes suction valve assembly, unloader pin springs, valve pins & valve gasket	
3	6670X	Replacement Discharge Valve Assembly includes discharge valve assembly & valve gasket	
1	7483X	Replacement Unloader Assembly includes unloader assembly, unloader piston assembly, valve gasket & pipe plug	
1	8272X	Replacement Unloader Assembly includes unloader piston assembly, unloader assembly, & valve gasket	

* As viewed facing the compressor from the bearing carrier side.

CONTROL GROUP 110861

(control versions L)

Item Number	Qty.	Part Number	Description
1	1	110827-001	hydraulic unloader assembly
2	1	3324	tube fitting, 1/4 tube x 1/8 npt x 1/4 tube
3	3	1642	tube fitting, 90° male elbow, 1/4 tube x 1/8 npt
4	2	1665	tube fitting, male branch tee, 1/4 tube x 1/4 tube x 1/8 npt
5	7 ft.	110515-025	copper tube, 1/4 o.d.
			Maintenance Parts
			Hydraulic Unloader Repair Kit
			includes diaphragm, stem assembly, inlet filter & fitting assembly, spring (0-200 p.s.i.) and spring (201-250 p.s.i. red color code)



CONTROL GROUP 110862

(control version S)

Item Number	Qty.	Part Number	Description
1	1	110844	pilot valve assembly
* 1.1	1	110832-140	pilot valve
1.2	1	2616	tube fitting, straight male connector, 3/8 tube x 1/4 npt
1.3	1	6317	mounting stud
1.4	1	160047-J05	set screw, 1/4-28 unfx .38, grade 5
1.5	1	2719	pipe plug, 1/4 npt, hex socket
2	1	124351-004	tube fitting, male branch tee, 1/4 tube x 1/4 npt
3	7 ft.	110515-025	copper tube, 1/4 o.d.
4	2	1665	tube fitting, male branch tee, 1/4 tube x 1/4 tube x 1/8 npt
5	2	1642	tube fitting, 90° male elbow, 1/4 tube x 1/8 npt

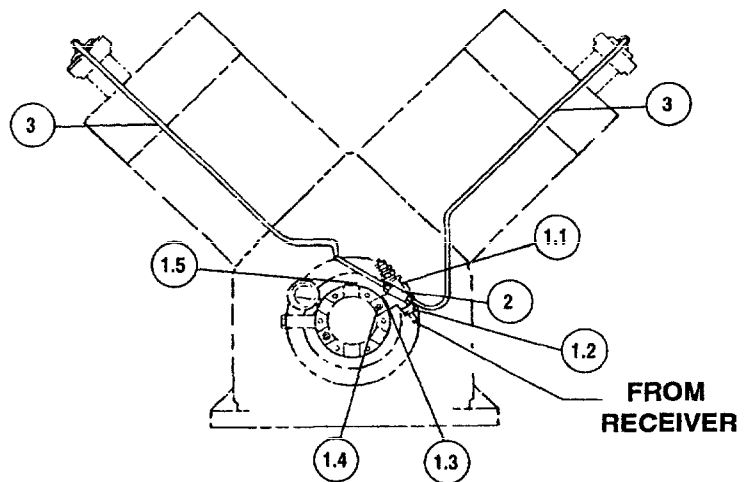
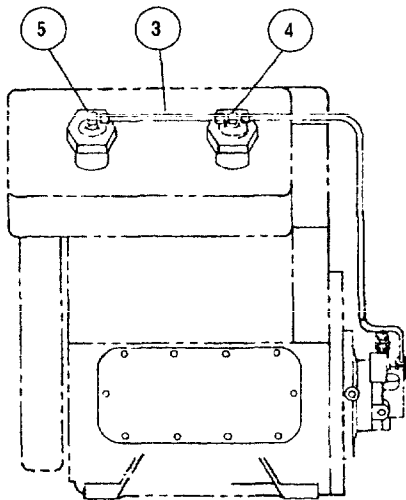
Maintenance Parts

6317X1

Mounting Stud Kit

includes mounting stud & setscrew

* See pages 34 & 35 for optional pilot valves that must be used with respective pressure ranges.



CONTROL GROUP 110863

(control version LS)

Item Number	Qty.	Part Number	Description
1	1	110845	pilot valve assembly
1.1	1	111422-175	pilot valve
1.2	1	110827-001	hydraulic unloader assembly
1.3	1	6317	mounting stud
1.4	1	160047-J05	set screw, 1/4-28 unf x .38, grade 5
1.5	1	7361	brass pipe tee, 1/4 npt x 1/4 npt x 1/4 npt
1.6	2	1642	tube fitting, 90° male elbow, 1/4 tube x 1/8 npt
1.7	1 ft.	110515-025	copper tube, 1/4 o.d.
1.8	1	1643	tube fitting, straight male connector, 1/4 tube x 1/8 npt
1.9	1	2708	tube fitting, 90° male elbow, 1/4 tube x 1/4 npt
1.10	1	2616	tube fitting, straight male connector, 3/8 tube x 1/4 npt
2	1	124351-004	tube fitting, male branch tee, 1/4 tube x 1/4 npt
3	7 ft.	110515-025	copper tube, 1/4 o.d.
4	2	1665	tube fitting, male branch tee, 1/4 tube x 1/4 tube x 1/8 npt
5	2	1642	tube fitting, 90° male elbow, 1/4 tube x 1/8 npt

Maintenance Parts

6317X1

Mounting Stud Kit

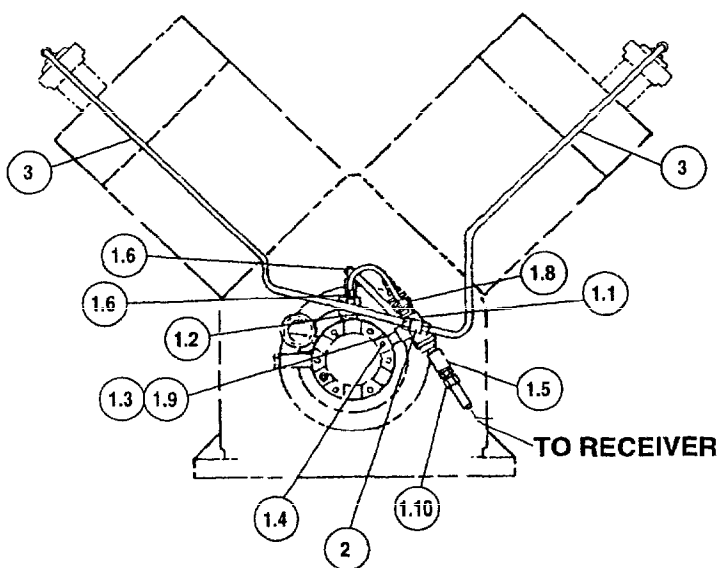
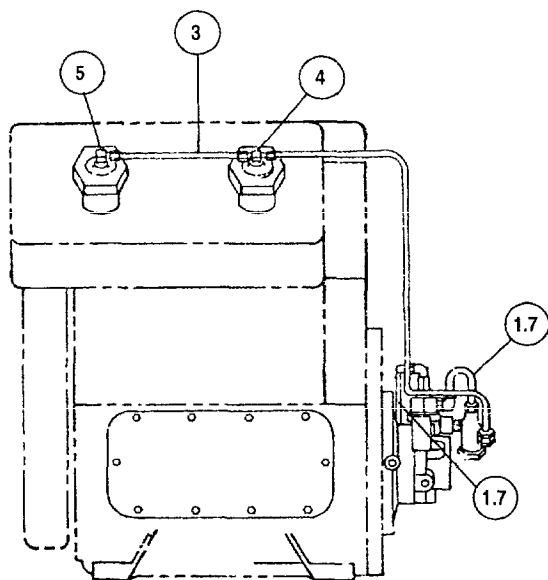
includes mounting stud & setscrew

1 113225

Hydraulic Unloader Repair Kit

includes diaphragm, stem assembly, inlet filter & fitting assembly, spring (0-200 p.s.i.) and spring (201-250 p.s.i. red color code)

* See pages 34 & 35 for optional pilot valves that must be used with respective pressure ranges.



CONTROL GROUP 110864

(control version LVD)

Item Number	Qty.	Part Number	Part Number	Description
1	1	110846		pilot valve assembly
1.1	1	111423-140		pilot valve
1.2	1	110827-001		hydraulic unloader assembly
1.3	1	6317		mounting stud
1.4	1	160047-J05		set screw, 1/4-28 unf x .38, grade 5
1.5	1	7361		brass pipe tee, 1/4 npt x 1/4 npt x 1/4 npt
1.6	2	1642		tube fitting, 90° male elbow, 1/4 tube x 1/8 npt
1.7	1 ft.	110515-025		copper tube, 1/4 o.d.
1.8	1	1643		tube fitting, straight male connector, 1/4 tube x 1/8 npt
1.9	1	2708		tube fitting, 90° male elbow, 1/4 tube x 1/4 npt
1.10	1	2616		tube fitting, straight male connector, 3/8 tube x 1/4 npt
2	1	124351-004		tube fitting, male branch tee, 1/4 tube x 1/4 npt
3	7 ft.	110515-025		copper tube, 1/4 o.d.
4	2	1665		tube fitting, male branch tee, 1/4 tube x 1/4 tube x 1/8 npt
5	2	1642		tube fitting, 90° male elbow, 1/4 tube x 1/8 npt

Maintenance Parts

6317X1

Mounting Stud Kit

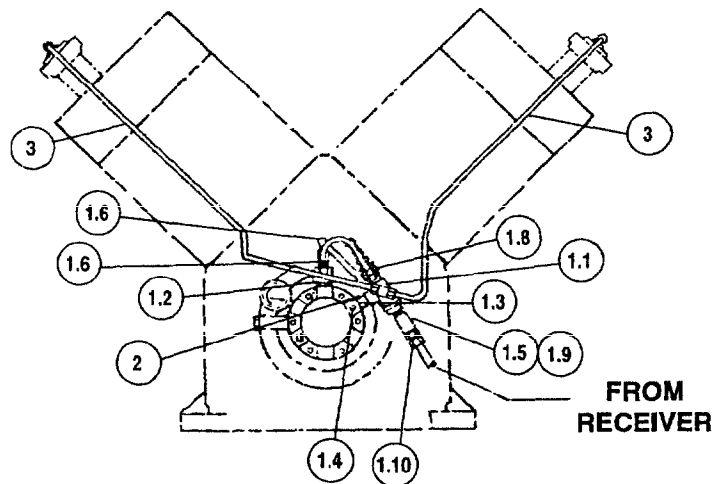
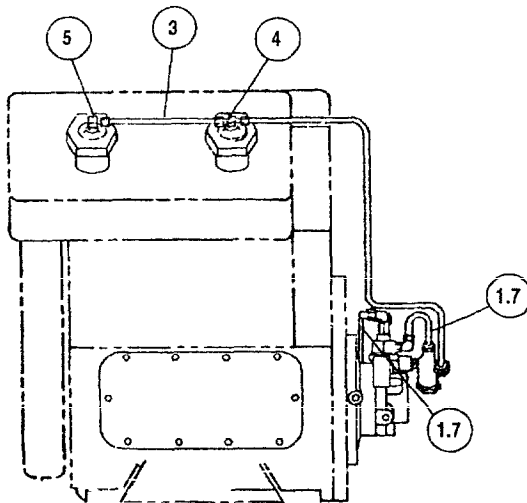
includes mounting stud & setscrew

1 113225

Hydraulic Unloader Repair Kit

includes diaphragm, stem assembly, inlet filter & fitting assembly, spring (0-200 p.s.i.) and spring (201-250 p.s.i. red color code)

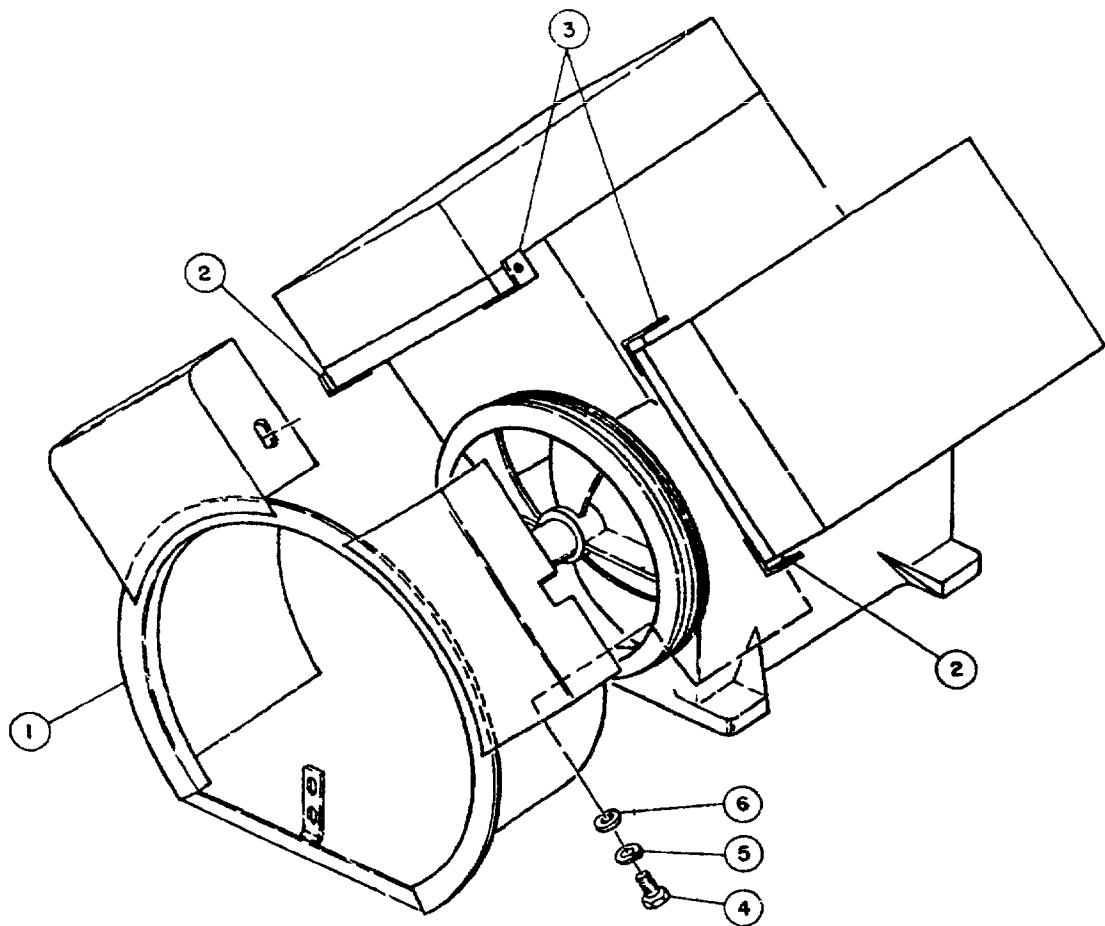
* See pages 34 & 35 for optional pilot valves that must be used with respective pressure ranges.



SHROUD GROUP 110470

for basics built prior to July 27, 1997 per Record of Change 103)

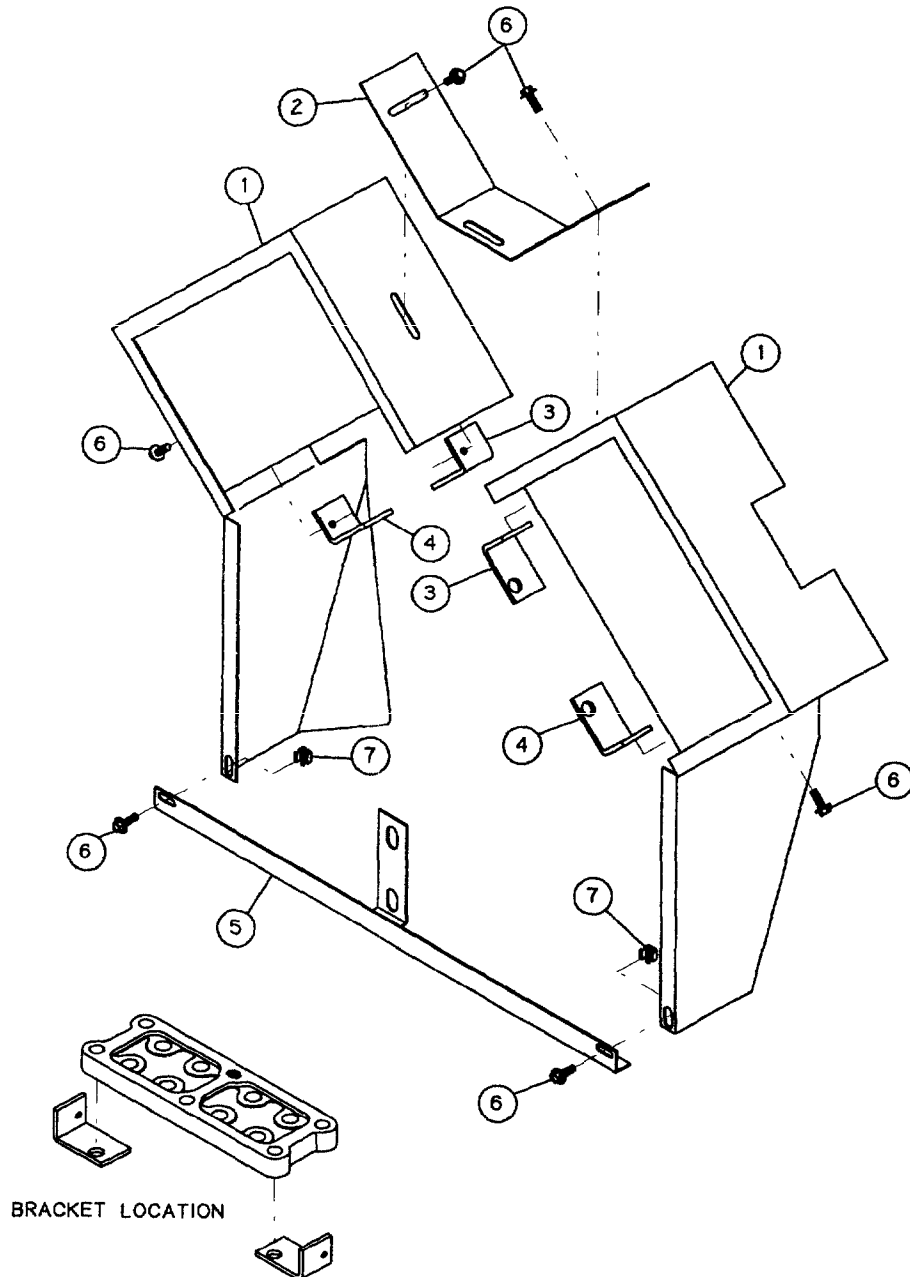
Item Number	Qty.	Part Number	Part Number	Description
1	1	7524		shroud assembly
2	2	7442		bracket
3	2	7441		bracket
4	4	123478-J07		hex. screw, 1/4-20 unc x .50, grade 5
5	4	2139		washer, 1/4
6	4	110428W025		flatwasher, 1/4



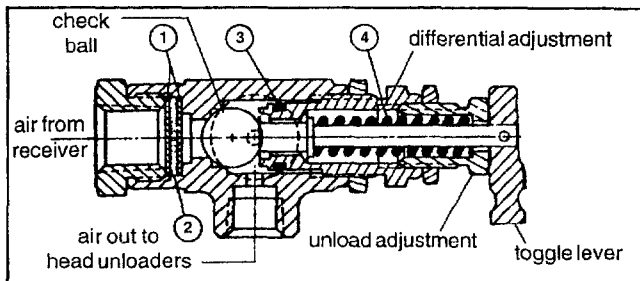
SHROUD GROUP 110470-001

for basics built after July 28, 1997 per Record of Change 104)

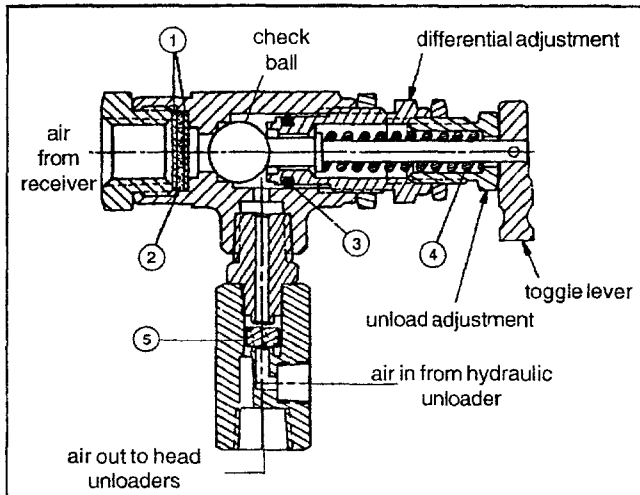
Item Number	Qty.	Part Number	Part Number	Description
1	1	113931		shroud assembly
2	1	113932		bracket
3	2	7442		bracket
4	2	7441		bracket
5	1	113933		shroud support
6	6	122151		hex. screw, 1/4-20 unc x .75
7	2	22456		speed nut, 1/4-20 unc



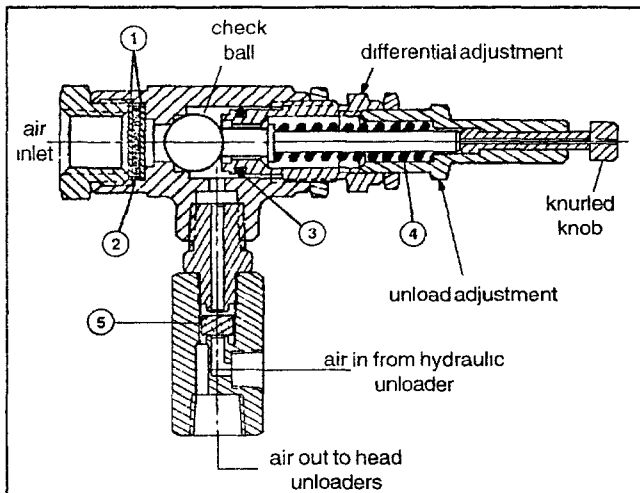
PILOT VALVES



110832 series pilot valve (control version S)



111422 series pilot valve (control version LS)



111423 series pilot valve (control version LVD)

WARNING !

Not all pilots are for use with all compressor systems. Make sure that the pilot you order is set within the safe operating limits of your compressor. Failure to heed this warning could result in an explosion.

Available Pilot Valves

Refer to illustrations at left to determine pilot valve series; add dash # listed below per pressure setting.

Dash #	Pressure Setting (p.s.i.)	Notes
-997	30-70	adjustable unload pressure / customer to set, see differential setting chart
-998	71-150	adjustable unload pressure / customer to set, see differential setting chart
-999	151-250	adjustable unload pressure / customer to set, see differential setting chart

Additional factory preset valves are available upon request.

Pilot Valve Repair Kit 110832-051

Can be used to repair 110832, 111422 & 111423 series pilot valves. Customer must specify which spring when ordering pilot valve repair kit.

Item #	Qty.	Part Number	Description
1	2		screen
2	1		filter
3	1		"o"ring
4	1	110832-052	replacement spring, pilot valve, 30-70 p.s.i. (red color code)
	1	110832-053	replacement spring, pilot valve, 71-150 p.s.i. (yellow color code)
	1	110832-054	replacement spring, pilot valve, 151-250 p.s.i. (green color code)
5	1	6196-003	disc

Differential Setting Chart

Spring Part # (item 4)	Unload (p.s.i.)	Min. Dif. (p.s.i.)	Max. Dif. (p.s.i.)
110832-052	30	2	4
"	40	5	8
"	50	5	8
"	60	5	8
"	70	5	10
110832-053	80	5	10
"	90	5	12
"	100	5	13
"	110	5	15
"	120	5	15
"	130	5	18
"	140	5	18
"	150	5	20
110832-054	160	5	15
"	170	5	20
"	175	5	23
"	200	5	25
"	250	10	30

SUCTION VALVE UNLOADER ASSEMBLIES

Description

The Quincy suction valve unloader assembly consists of unloading arrangements on the suction valves, having a plunger to contact the suction valve disc and an unloader pilot valve (part no.s 110832-***, and 111422-*** & 111423-*** to automatically regulate the passing of receiver pressure to the unloading arrangement.

Application

Suction valve unloader assemblies are recommended for use on Quincy compressors where the compressor is to run continuously and a constant pressure is to be maintained. The purpose is to automatically unseat the suction valve of the compressor when the air supply is greater than the demand.

Operation

Unloading occurs when receiver pressure is sufficient to overcome pilot valve spring pressure. The check ball is then unseated, allowing receiver pressure to pass to the unloading arrangements. The compressor will run unloaded until the receiver pressure drops to a predetermined level. At this time, the action of the ball is reversed, shutting off receiver pressure to the unloader arrangement and venting the unloader to atmosphere. This allows the compressor to load. The drive, either electric motor or combustion engine, runs continuously and must be started and stopped manually.

Pilot valve 111423-*** can be locked out, for models equipped with dual control, to provide automatic start/stop operation. The knurled knob at the top of the pilot can be turned clockwise, until it stops, to lock it out. A pressure switch is required to stop the motor. Failure to use a pressure switch, with the pilot valve locked out, could result in unsafe conditions.

WARNING !

A pressure switch must be incorporated whenever pilot valve 111423-*** is employed as part of the control system.

The compressor will operate in the continuous run mode if the knurled knob is turned counterclockwise until it stops.

Installation

The pilot valve is to be connected to the air receiver using a minimum of 3/8" o.d. copper tube. Compressors in the field, not equipped with a suction valve

unloader assembly, can be converted to constant speed. Consult your local Quincy Compressor Distributor for assistance with conversion procedures.

Service

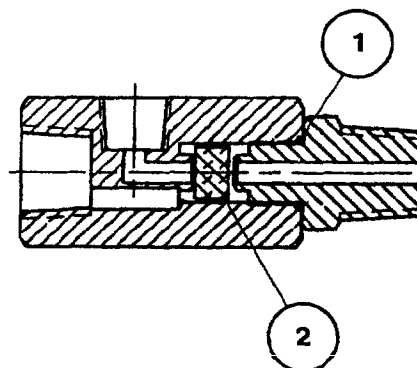
Periodically check the filter & screens in the inlet of the pilot valve to make sure they are free of obstructions. If they become clogged, remove and clean or replace. Inspect the "o"ring located in the opposite end of the pilot valve body for wear or damage; replace if necessary.

Adjustment

The unloading pressure is adjustable and is regulated by turning the hex nut (marked "unload adj." in cross sectional illustrations of pilot valves). Turn the hex nut clockwise to increase and counterclockwise to decrease the unloading pressure.

The differential (difference between unloading and loading pressure) is set by turning the hex nut (marked "differential adj." in the cross sectional illustrations of the pilot valves). Increase the differential pressure by turning the hex nut clockwise - decrease by turning counterclockwise. Tighten the locknuts after adjustment.

CHECK VALVE ASSEMBLIES



Check Valve Assembly Replacement Parts

Item #	Qty.	Part Number	Description
		6194X2	Check Valve Assembly
1	1	123157-010	"o"ring
2	1	6196-002	disc
		6194X3	Check Valve Assembly
		(for use with diester or phosphate ester synthetic lubricants)	
1	1	22749-010	"o"ring
2	1	6196-003	disc

Head Kit K5120A			
Item #	Qty.	Part Number	Description
12		2036	valve disc
12		6909	valve spring
12		2024	valve gasket
4		7398	valve cover gasket
4		2025	valve cover gasket
4		1556	gasket, valve
4		1855	diaphragm
2		7403	gasket, cylinder to head
2		110377E200	air filter element
2		5860	gasket, intercooler to head

Overhaul Kit K5120C			
Item #	Qty.	Part Number	Description
2		110377E200	air filter element
4		1855	diaphragm
12		2036	valve disc
4		6656PR	connecting rod inserts (1 pair)
12		6909	valve spring
1		7435	gasket set
2		8168A	ring set
2		7527A	ring set
1		8966	adjustment seal

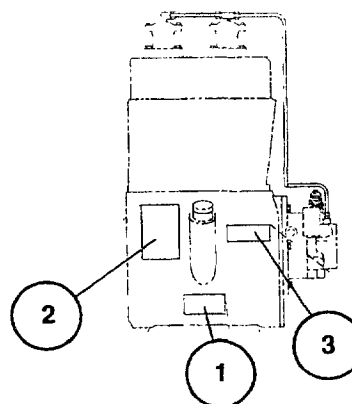
Recommended Spare Parts			
Item #	Qty.	Part Number	Description
2		1855	diaphragm
2		1855S	diaphragm
2		7277X	replacement suction valve assy.
2		7271X	valve assembly
2		6444PR	inserts, connecting rod
1		110822	oil pressure gauge
1		160078	oil pump repair kit
1		160078-001	oil pump repair kit
1		110832-051	pilot repair kit
1		7126	gasket set
1		110377E100	air filter element
1		113225	hydraulic unloader repair kit

Basic Compressor Repair Kit 110823-510			
Item #	Qty.	Part Number	Description
2		110190-004	piston pin
2		110377E200	air filter element
1		110775-001	"o"ring kit
4		110799-010	needle bearing
1		110814	oil filter
12		2036	valve disc
1		3720	bearing cup
1		40775	bearing cone
1		4357	bearing cup
2		6443SR	replacement con rod bushing
1		6651	bearing cone
4		6656PR	connecting rod inserts
12		6909	valve spring
1		7435	gasket set
2		7527	Piston Ring Set, LP
2		8168	Piston Ring Set, HP
2		8647	piston pin

V.I.P. Kit 110516-510			
Item #	Qty.	Part Number	Description
1		110822	oil pressure gauge
4		1855	diaphragm
12		1857	valve pin
12		2036	valve disc
2		6283	hydraulic unloader filter
12		6909	valve spring
12		6910	valve spring
1		7435	gasket set

Piston Pin Kit K5120F			
Item #	Qty.	Part Number	Description
2		110190-004	piston pin
2		8647	piston pin
2		6443SR	Replacement Con-Rod Bushing
4		110799-010	needle bearing
2		8648	retaining ring

Gasket Set 7435			
Item #	Qty.	Part Number	Description
4		1556	gasket, valve
12		2024	gasket, valve
4		2025	gasket, valve cover
1		5494	gasket, bearing carrier
2		5827	gasket, cylinder to crankcase
5		5828	gasket, companion flange
2		5860	gasket, intercooler to head
2		6678	gasket, inspection plate
1		6679	gasket, oil inlet bracket
4		7398	gasket, valve cover
2		7403	gasket, cylinder to head



Decals			
Item #	Qty.	Part Number	Description
1	1	110831	serial number & nameplate
2	1	* 127889-A	decal, CAUTION/manual/ "Failure to follow..."
3	1	* 127889-B	decal, DANGER! / "Air used for breathing..."

* Not sold separate; order 127889.

TYPICAL UNIT REPAIR PARTS LIST

The parts listed here are for standard QR 5120 units and may or may not be applicable to specially built units. Check with your local authorized Quincy Compressor Distributor for parts that can be used for custom built units. Make sure the components you order are rated within the safe operating limits of your system. If you are doubtful about which components to order, contact you local Quincy distributor.

(QR 5120 simplex - horizontal tank - electric motor)

Qty	Part Number	Part Number	Part Number	Description
	120 gal.	200 gal.		
1	113271-200	113273-200		tank
1	113279	113283		top plate
1	111136-050	111136-050		tank drain valve
1	111136-100	111136-100		service valve
1	110514-300	110514-300		pressure gauge
1	110512-003	110512-003		pressure switch (135-175 psi)
1	110513-200	110513-200		pressure relief valve (200 psi; in tank)
1	121918-141	121918-141		discharge tube
2	111265	111265		ferrule/sleeve
	25 H.P			
3	110258B120			drive belt
1	110323			motor pulley
1	8461			motor pulley bushing
1	111978K002			belt guard assembly
	200v, 3Ø	230/460v, 3Ø		
1	40659	7360		25 h.p. motor (O.D.P.)

(QR 5120 duplex - horizontal tank - electric motor)

Qty	Part Number	Part Number	Part Number	Description
	200 gal.	240 gal.		
1	113468-200	113470-200		tank
2	113283	113283		top plate
1	111136-050	111136-050		tank drain valve
1	111136-100	111136-100		service valve
1	110514-300	110514-300		pressure gauge
2	110512-003	110512-003		pressure switch (135-175 psi)
1	110513-200	110513-200		pressure relief valve (200 psi; in tank)
2	121918-141	121918-141		discharge tube
4	111265	111265		ferrule/sleeve
	25 H.P			
6	110258B120			drive belt
2	110323			motor pulley
2	8461			motor pulley bushing
2	111978K002			belt guard assembly
	200v, 3Ø	230/460v, 3Ø		
2	40659	7360		25 h.p. motor (O.D.P.)

Part numbers shown in italics apply to tank mounted units and base mounted units.

NATIONWIDE SALES & SERVICE

Quincy Service is always near.
There are Authorized Quincy Distributors located
throughout the United States & Canada that stock
genuine Quincy parts & accessories for a wide
range of Quincy products.

Quincy Service specialists are factory trained and
will help keep you in business. Call for Authorized
Quincy Service.

For reciprocating products
and natural gas engine driven
helical screw products:
call 1-217-222-7700
or fax requests to 1-800-219-9126

For all other helical screw products:
call 1-334-937-5900
or fax requests to 1-800-219-9131



Quincy

Compressor Division

Coltec Industries

